

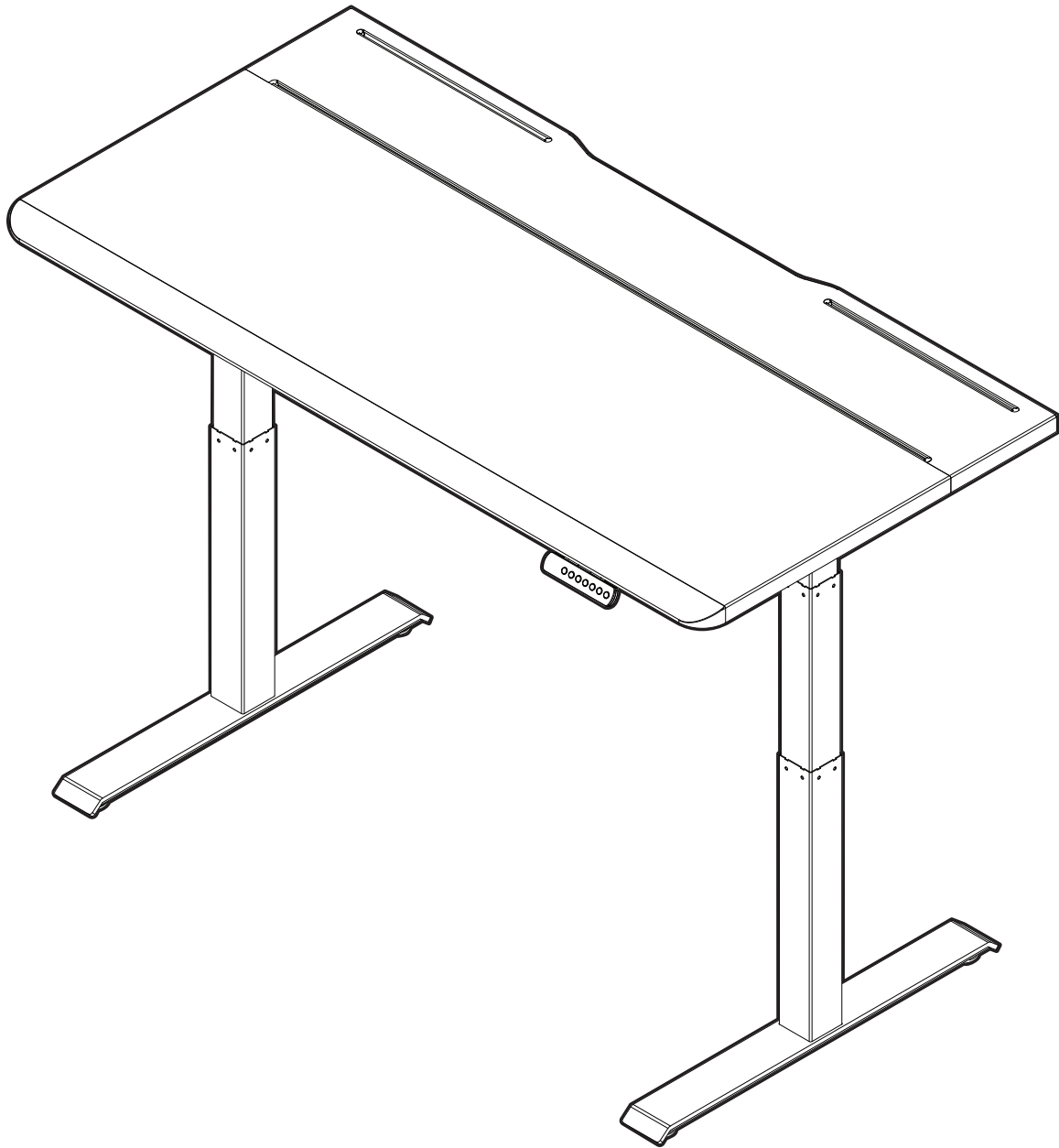
# Electric Standing Desk 60x30 with TechTrack™



Two Person  
Assembly



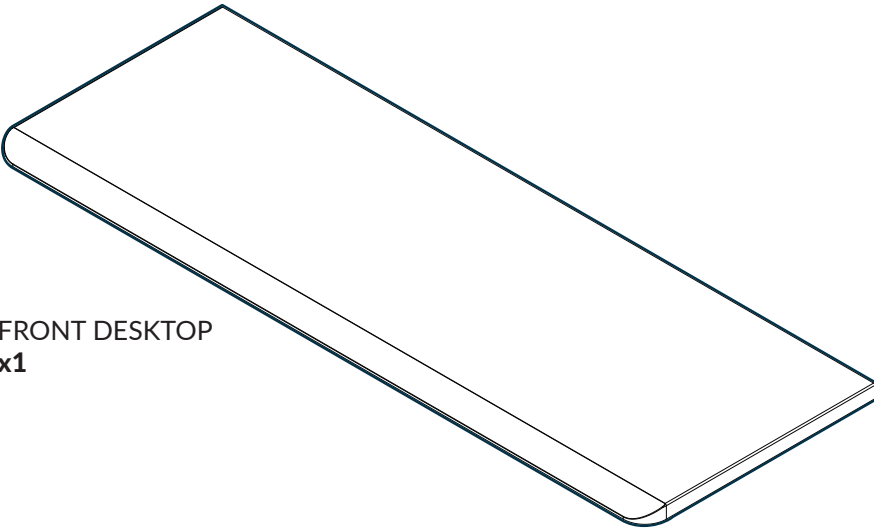
200 lbs  
90.71 kg



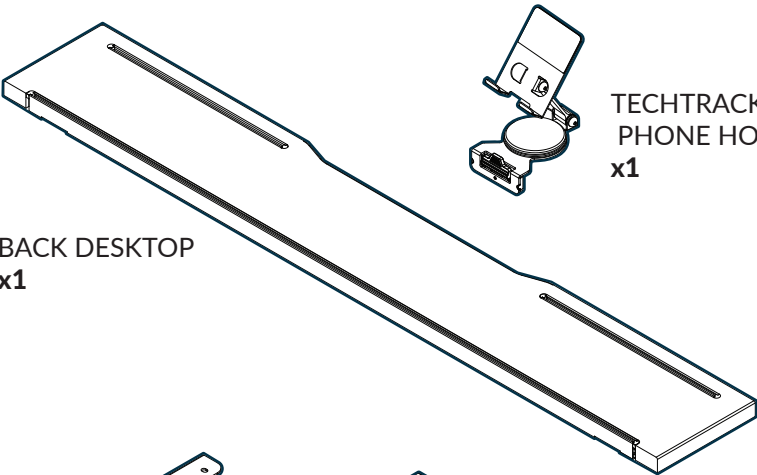
# Included Parts

\*Desktop and leg kit ship in separate boxes and could arrive in separate deliveries.

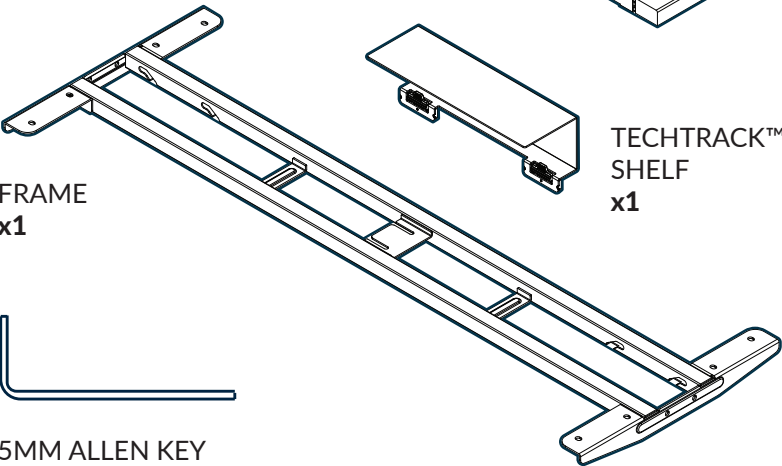
## Box 1 of 2



FRONT DESKTOP  
x1



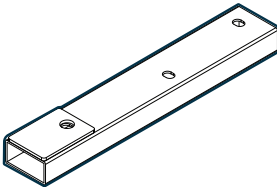
BACK DESKTOP  
x1



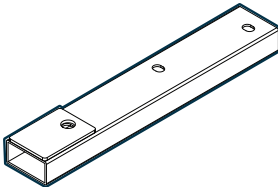
FRAME  
x1



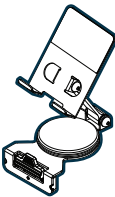
5MM ALLEN KEY  
x1



EXTENSION TUBE (RIGHT)  
x1



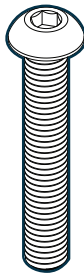
EXTENSION TUBE (LEFT)  
x1



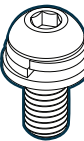
TECHTRACK™  
PHONE HOLDER  
x1



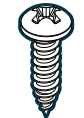
TECHTRACK™  
SHELF  
x1



M8x50MM SCREW  
x6



M8x20MM SCREW SET  
x4



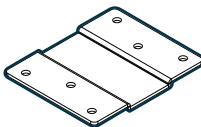
#10 x 5/8" SCREW  
x6



M8 SPRING WASHER  
x6



M8 WASHER  
x6

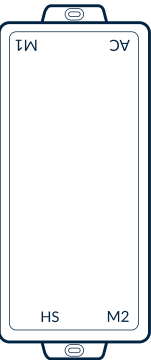


DESKTOP CONNECTION PLATE  
x1

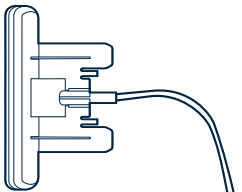
## Box 2 of 2



LEGS  
x2



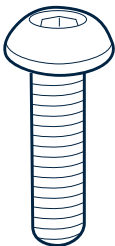
CONTROL BOX  
x1



CONTROL PANEL  
x1



6MM ALLEN KEY  
x1



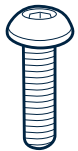
M10x40MM  
SCREW  
x4



ADHESIVE CLIPS  
x2



4MM ALLEN KEY  
x1



M6x14MM  
SCREW  
x4



M6 WASHER  
x4



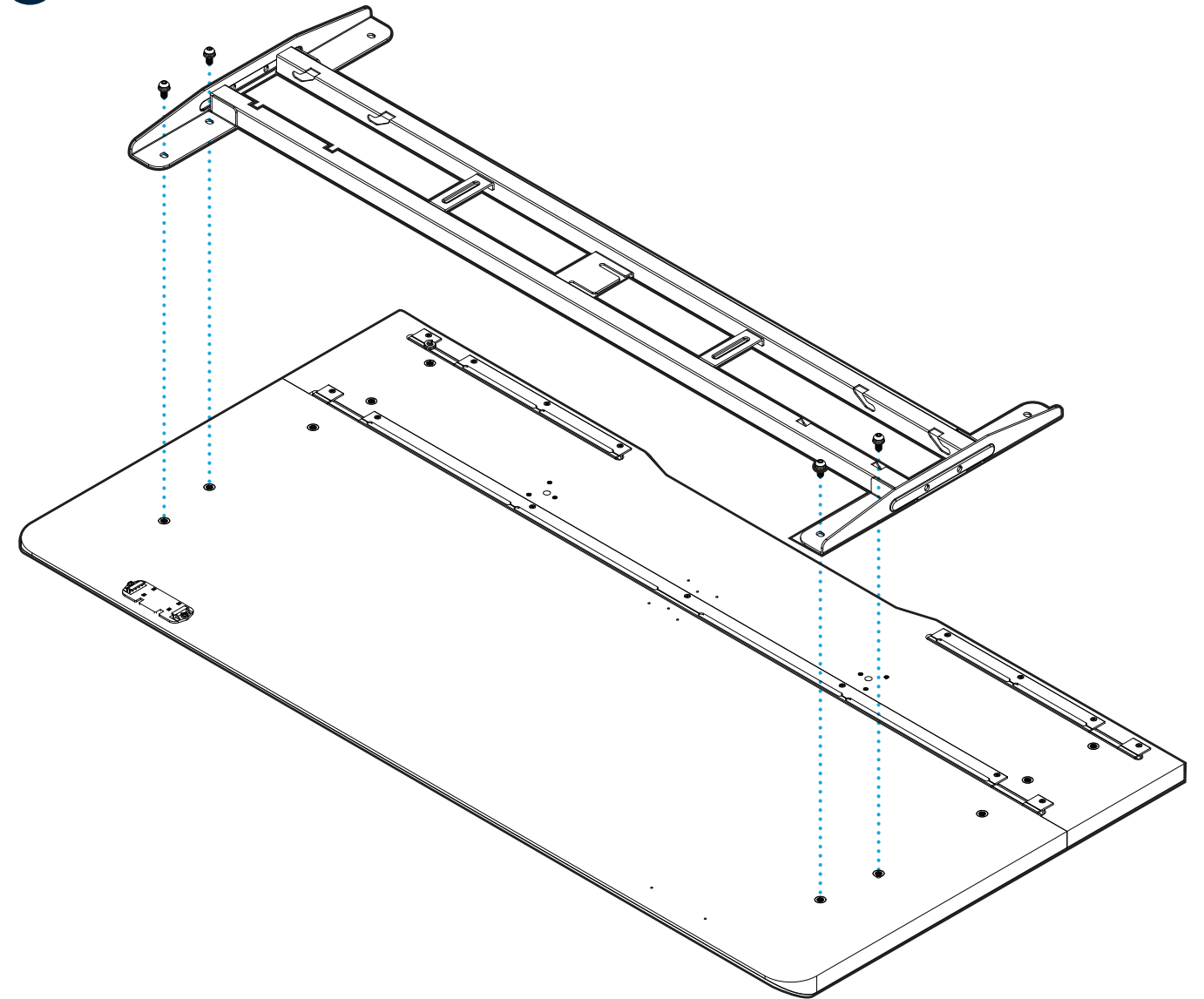
FEET  
x2

## Tools Needed (Not Included)

- PHILLIPS SCREWDRIVER

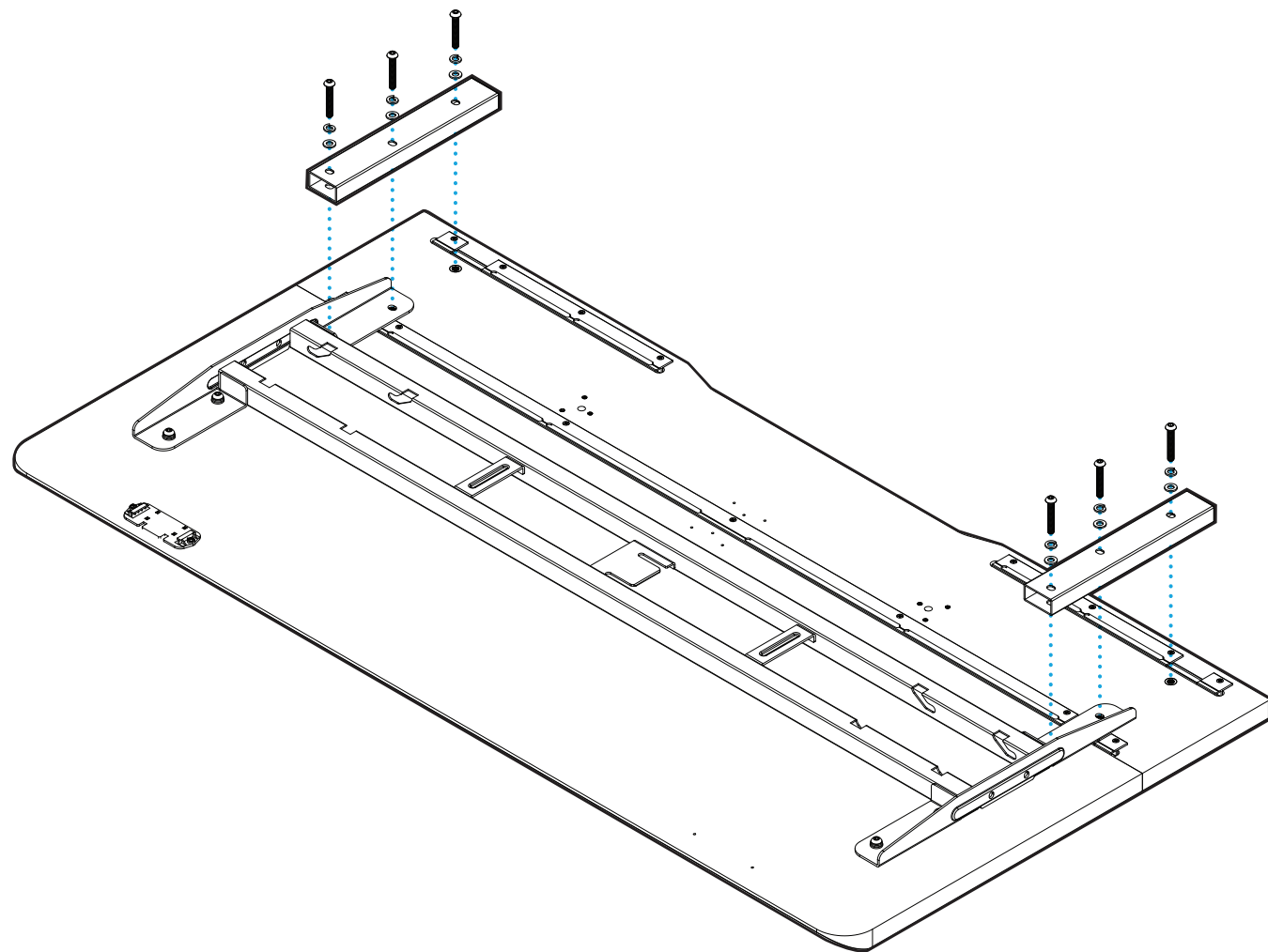
## Desk Assembly

1



Place the **FRONT AND BACK DESKTOP** panels side by side and align them.  
Position the frame over the screw holes on the front panel. Insert **(4) M8X20 SCREW SETS** and loosely tighten to hold the frame in place.

2



Attach the **EXTENSION TUBES** marked “R” and “L” to the screw holes on the **FRAME** and **FRONT DESKTOP**.

\* Be sure “R” and “L” labels are visible.

\* Create (6) screw sets by combining:

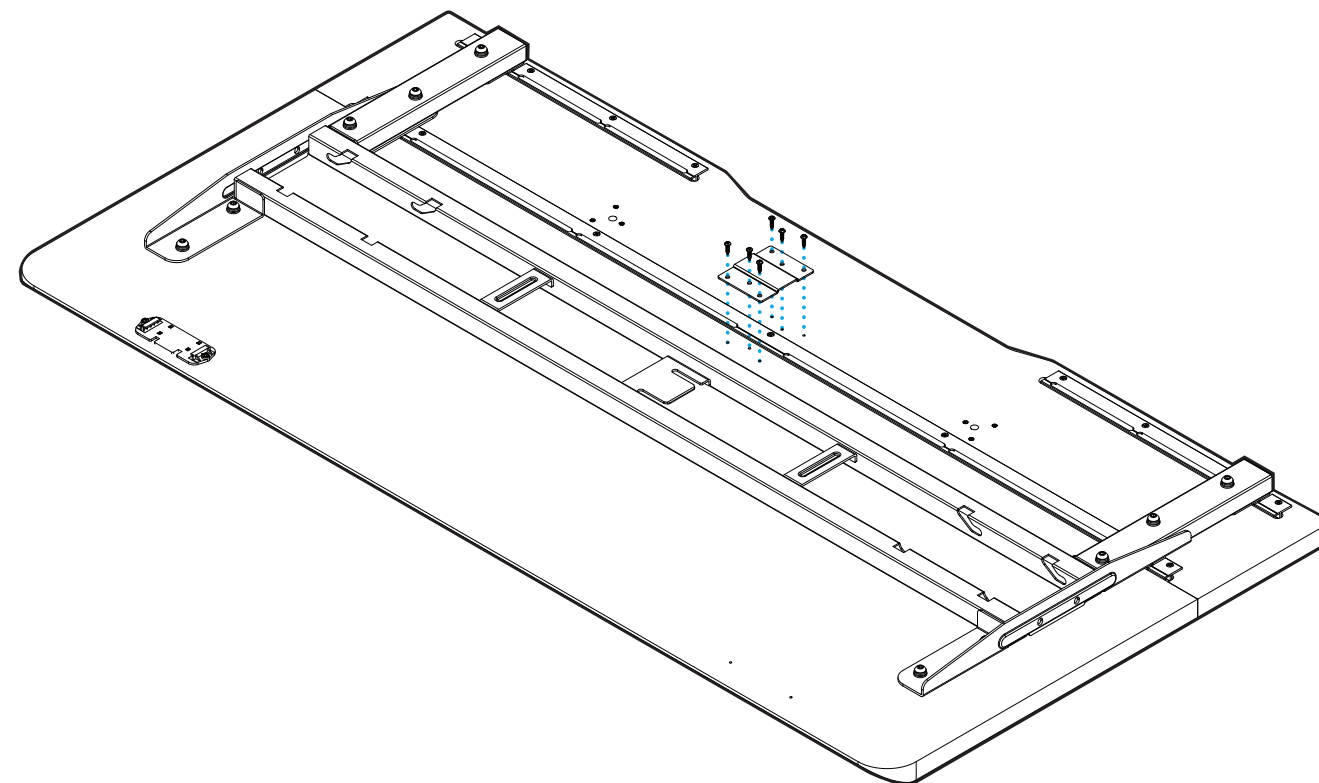
\* (1) **M8X50 SCREW**

\* (1) **M8 SPRING WASHER**

\* (1) **M8 WASHER**

\* Insert the sets into the screw holes and loosely tighten. Ensure each screw makes contact with the threaded inserts in the desktops.

3

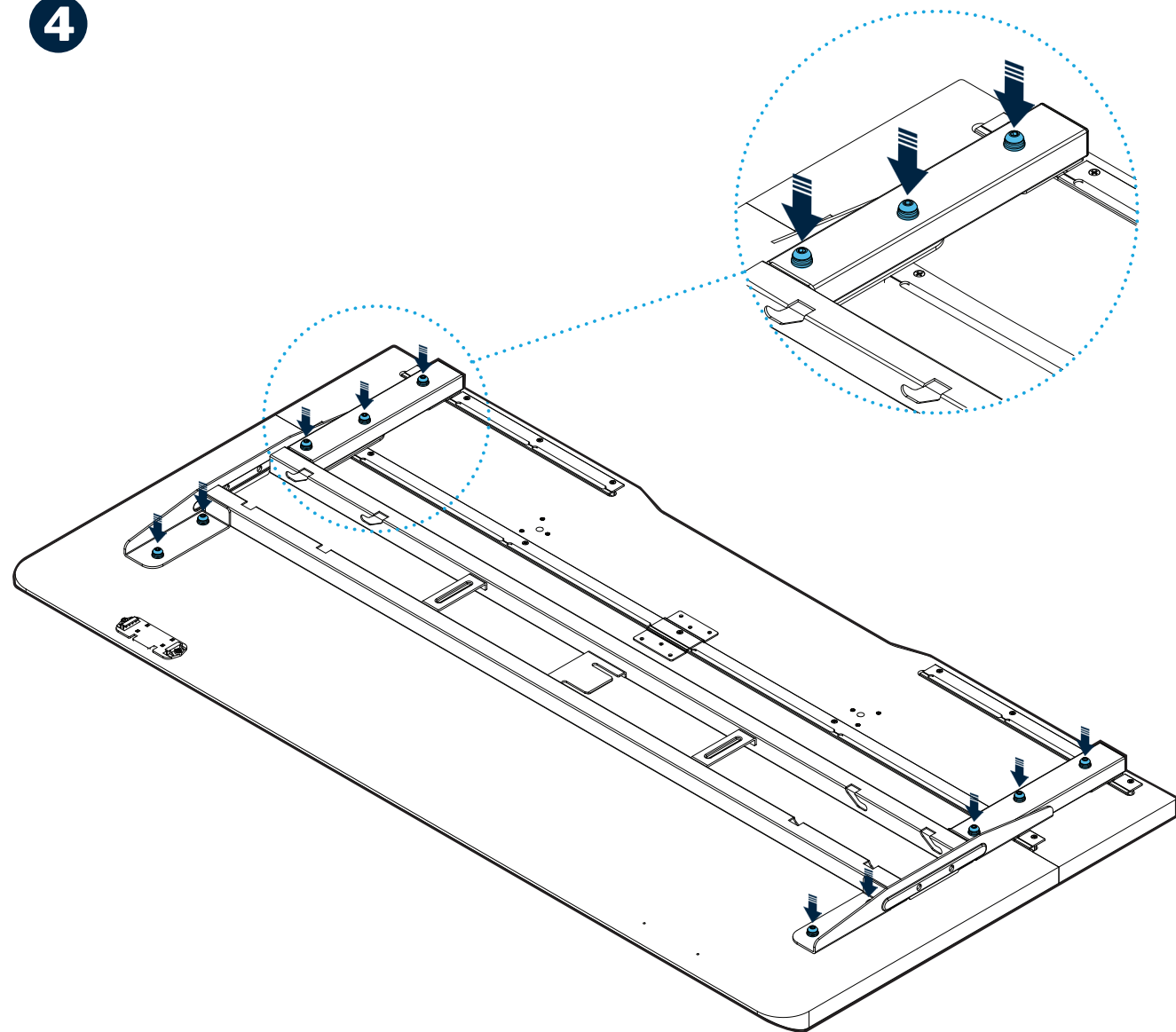


**Note:** Check alignment first. Make sure the desktops are flush with no gaps before moving on.

Place the **DESKTOP CONNECTION PLATE** over the center seam.

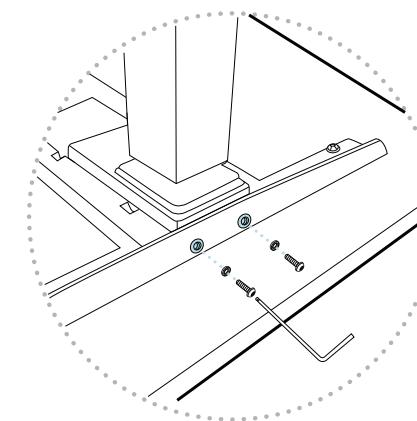
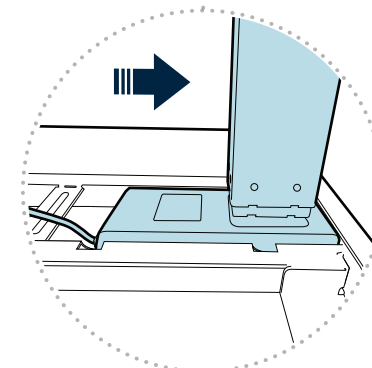
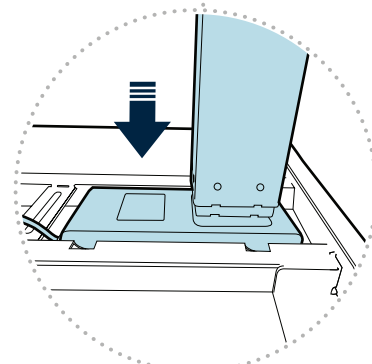
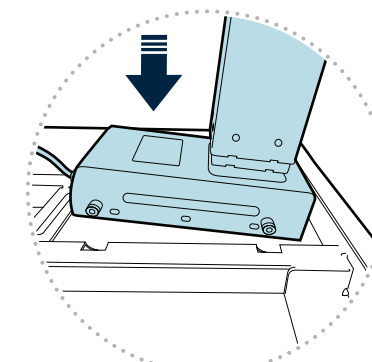
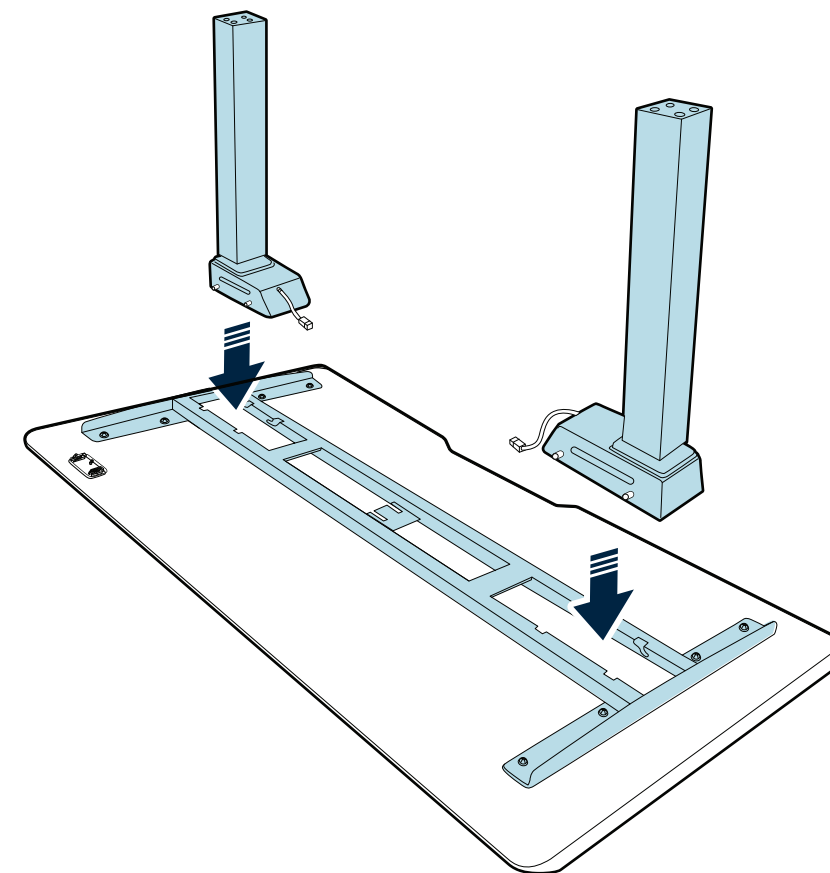
Insert (6) **#10 X 5/8” SCREWS** and tighten with a Phillips screwdriver.

4



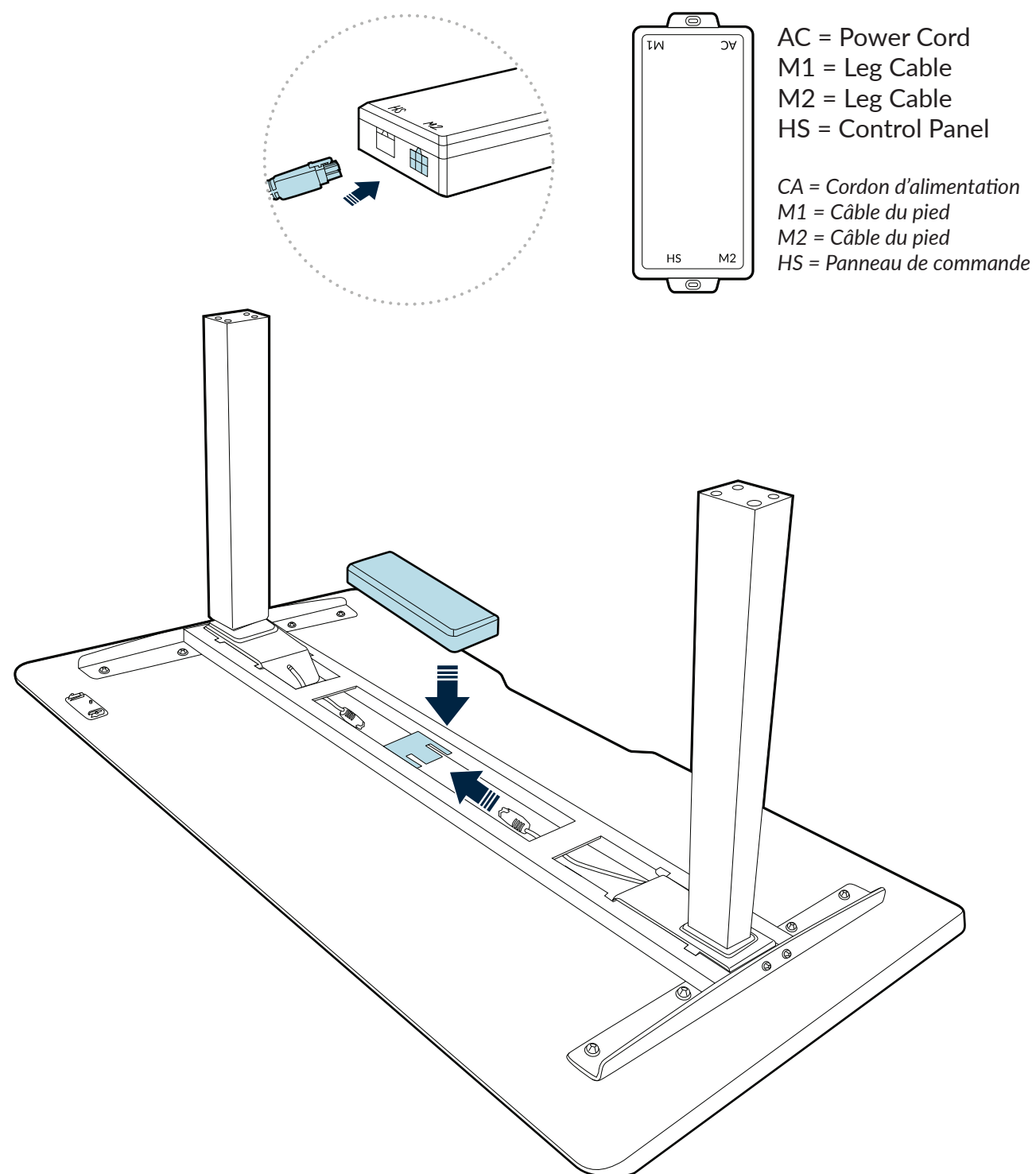
Securely tighten all **M8 SCREWS**.

5



Place each leg into the grooved areas on the frame (either leg fits either side). Push each leg outward until fully seated and properly aligned. Use the smaller **M6 HEX KEY** provided to tighten **M6X14MM SCREWS** with washers into each leg.

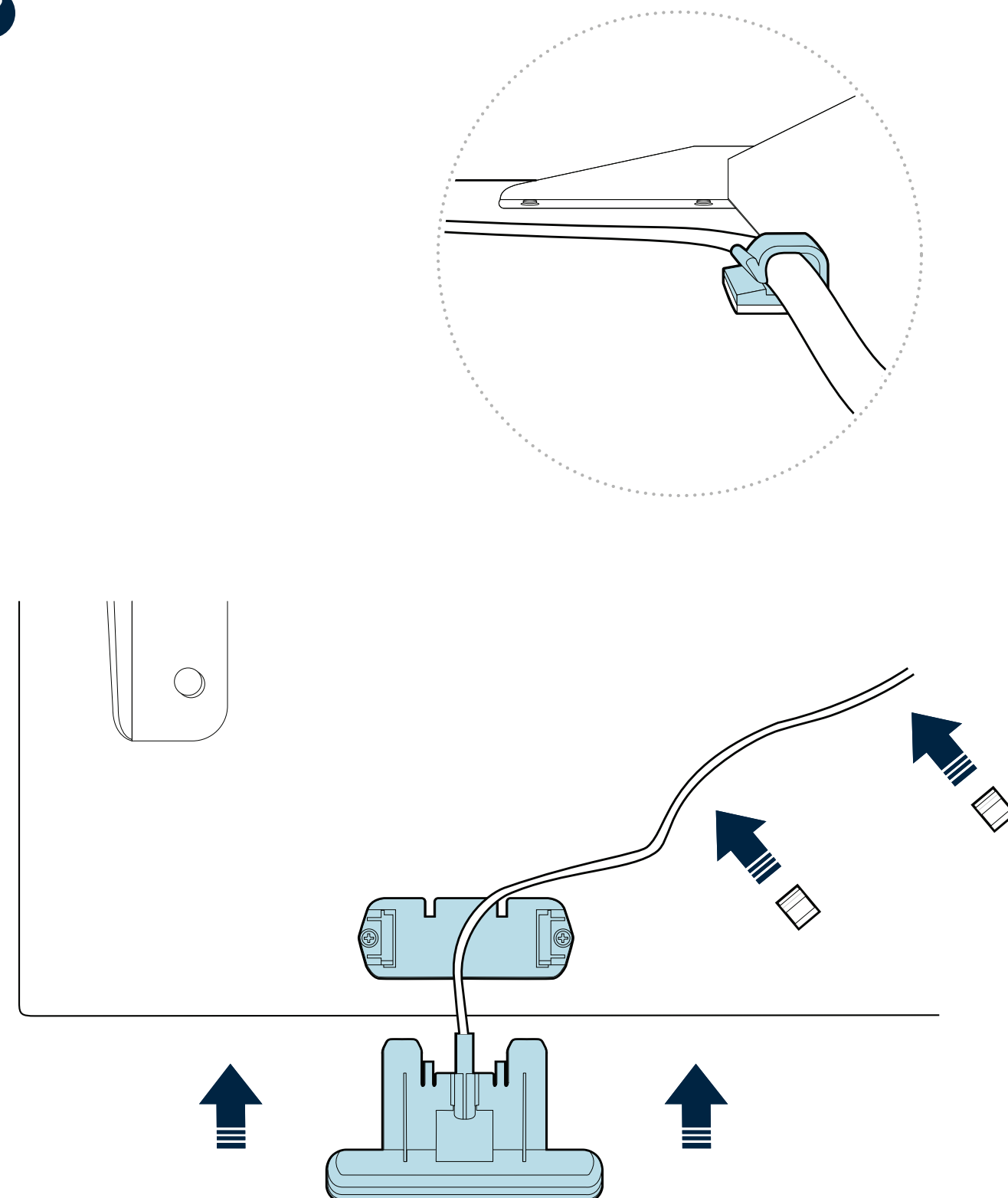
6



While the desk is still face down:

- \* Lower the **CONTROL BOX** into the center cavity of the **FRAME**.
- \* Slide it until it locks into the bracket.
- \* Connect the leg cables to the **CONTROL BOX** at ports M1 and M2.

7

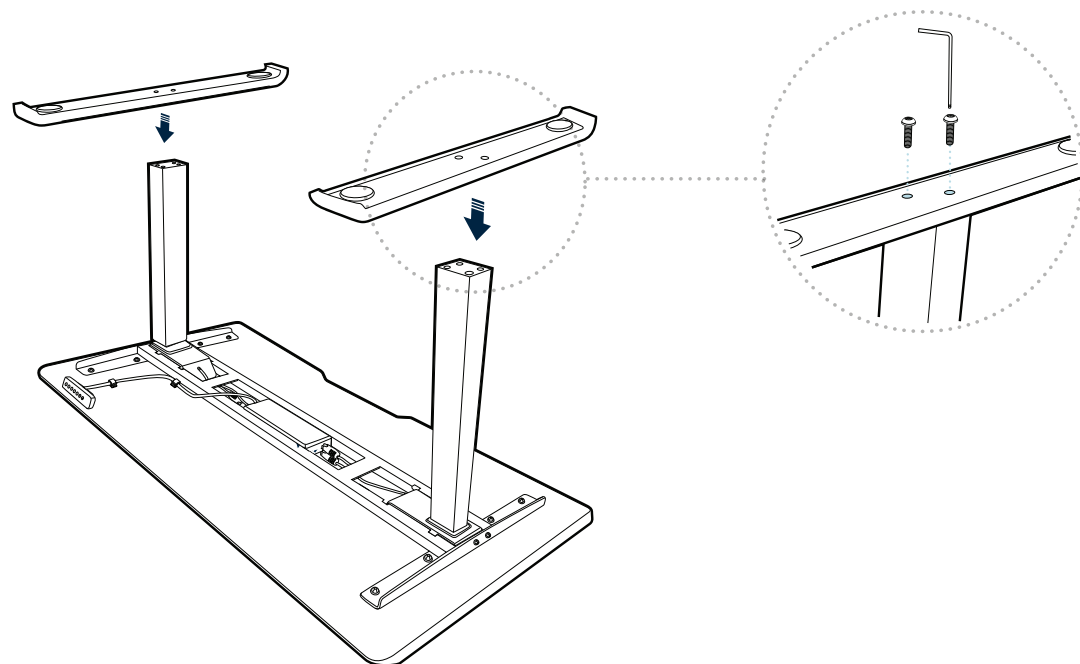


Slide the **CONTROL PANEL** into its bracket and connect the cable to the **CONTROL BOX** port HS.

**Note:** The **CONTROL PANEL** can be placed on the left or right side.  
If needed, unscrew the bracket and move it to the pre-drilled holes on the other side.

Use the included **ADHESIVE CLIPS** to secure the cord under the desktop.

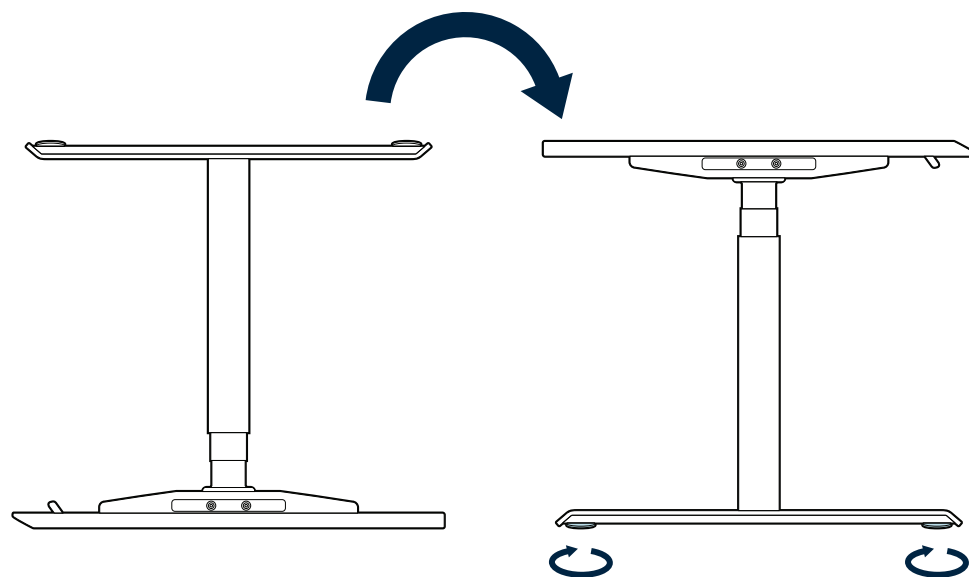
8



Once the **CONTROL BOX** is secure and while the desk is still face down, place one **FOOT** on top of one **LEG** aligning the screw holes. Use the larger hex key (M10) provided to securely tighten screws (M10 - 40mm) into the feet. Repeat this step to attach the other foot.

**PLEASE NOTE:** A cable tray is available for purchase as an added accessory. If you plan to attach a cable tray, it will be easiest to do so while the desk is still face down.

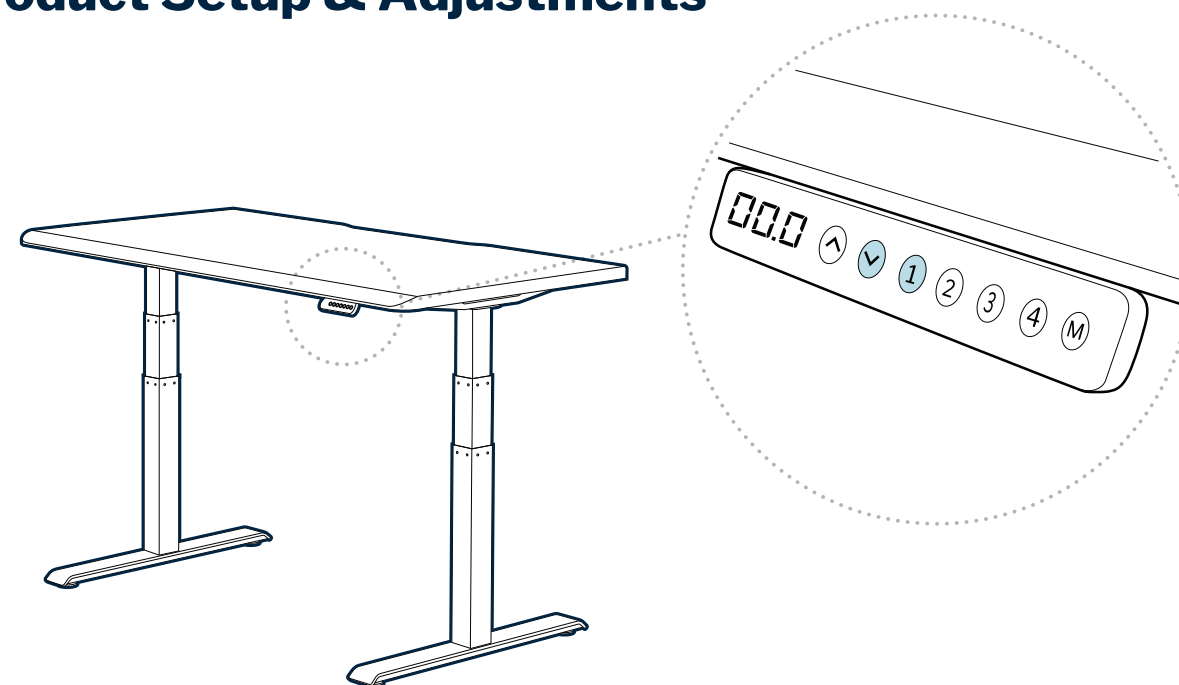
9



Once **LEGS** and **feet** are secure, two people should carefully flip the assembled desk (along the back edge to avoid damaging the control panel) to an upright position. Adjust the footpads to level the desk as needed.

Before starting your initial setup, place the desk where you want it, connect the power cord to the control box AC input, and plug the desk in.

## Product Setup & Adjustments



### Initial Setup

**NOTE:** If you have the Executive Collection Standing Desk Base, please remove the Cable Management Tray before setup.

Press the DOWN button on the control panel until the base reaches its lowest position. Press and hold the DOWN button again until the LED display reads "RST".

Press and hold the 1 button (about 5 seconds) while the LED flashes "RST" and switches to either:

- 10.1 = One-Touch (preset buttons work with one quick press)
- 10.2 = Constant-Touch (preset buttons work when pressed and held down for a few seconds)

Release the 1 button. Press the 1 button again until desired setting is reached. Once the chosen setting is displayed, release the button and wait for the display to return to "RST".

Finish the reset process by pressing and holding the DOWN button until the desk lowers a little bit more, slightly rises, and stops. Release the button. The new program is saved and your desk is now ready to use.

### Inches to Centimeters

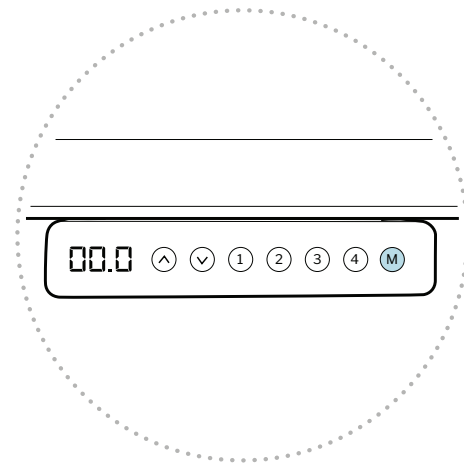
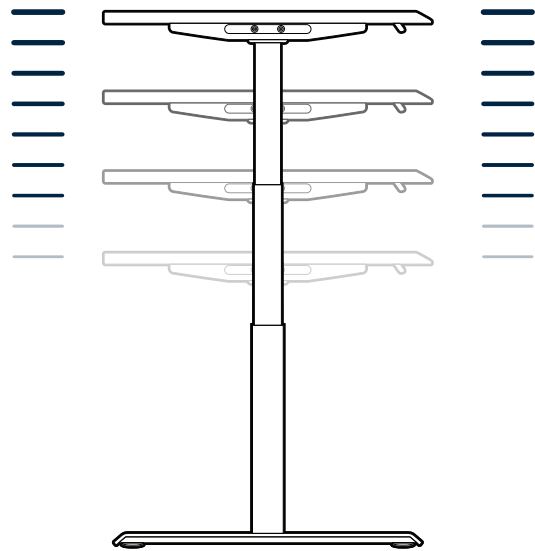
To toggle from inches to centimeters on the display, first press the DOWN button until the desk reaches the lowest position (25"). Press and hold the DOWN button again until the display flashes "RST". Press and hold the 2 button (about 8 seconds) until the display flashes "RST" and then switches to either **10.3** (= cm) or **10.4** (= in).

If the display is not flashing "RST":

1. Lower the desk to the lowest position (25"), then release the button.
2. Press and hold the DOWN button until the "RST" flashes and release the button.
3. Press and hold the DOWN button again until the display shows the height of 25", then release the button.

If the display is already flashing "RST", begin with step 2 above.





## Height Settings and Preferences

The height settings range from 25-50.5 inches (63.5-128 cm). You can program 4 height preferences by raising or lowering the desk to your desired height, pressing the “M” button (you will see “S-” appear on the display), then pressing 1, 2, 3, or 4.

## Setting Upper & Lower Limits

The height settings range from 25-50.5 inches (63.5-128 cm). If you prefer to change the settings to a more narrow range, follow the below steps.

Make sure the power is ON and a number reads on the LED display (if no number appears, please follow the Troubleshooting and Reset procedure).

**To set the Upper-Limit Position:** Use the UP/DOWN buttons to move the base to the desired maximum-height position. Press the “M” button and release. Press the UP button and release. The LED display will flash “S-”. Press and hold the “M” button until the LED display changes to “999”. The display will automatically return to the selected height. The new upper limit is now set.

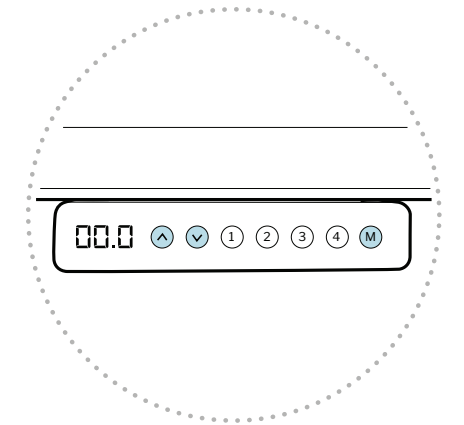
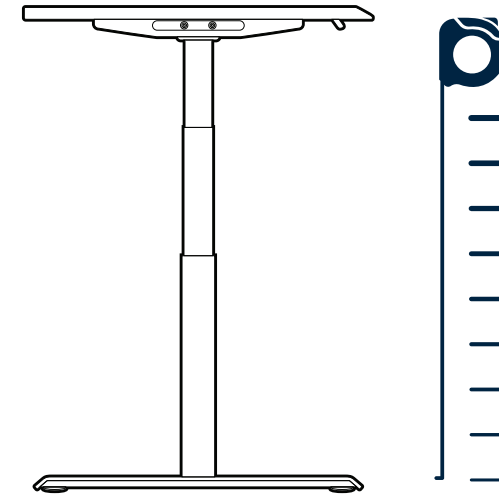
**To set the Lower-Limit Position:** Use the UP/DOWN buttons to move the base to the desired minimum-height position. Press the “M” button and release. Press the DOWN button and release. The LED display will flash “S-”. Press and hold the “M” button until the LED display changes to “000”. The display will automatically return to the selected height. The new lower limit is now set.

**To Remove Upper/Lower Limit Positions:** Press the “M” button and release. The LED display will read “S-”. Within 5 seconds, press and hold the “M” button again for 2 seconds. The LED display will change to “555” and then automatically return to the height display. The upper and lower limits are now removed.

**WARNING:** A RESET procedure requires the desk base to fully retract (beyond any lower limit set). Please ensure that you have the proper clearance below the desk base.

After the upper and lower limits are set, the previous memory positions (1, 2, 3, 4) may be outside the new range of movement. If so, simply reset the memory positions.

If you attempt to revise a previously set upper or lower limit and it is outside of the existing range, you will need to remove the previously set upper/lower limits first.



## Recalibrating

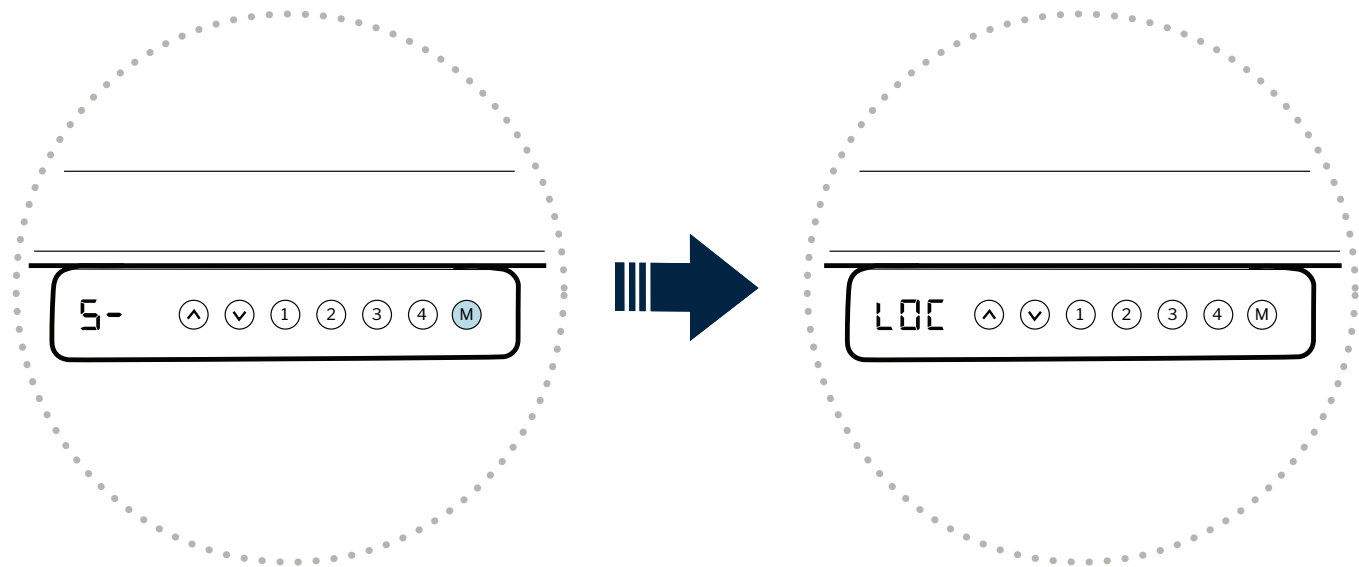
The desk may need to be recalibrated if the screen is not showing the correct height—for instance the display reads 50.5” but is in fully lowered position. To do this, press the DOWN button on the control panel until the base reaches its lowest position. Measure the distance from floor to the top surface of the desktop. If the number on the LED display does NOT match your measurement, follow these steps:

Press and hold the DOWN button until the LED display reads “RST”. Press and hold the “M” button until the LED displays the flashing height. Use the UP/DOWN buttons to change the value of the starting height so that it matches your measurement. The display will return to “RST” in about 5 seconds.

Finish the reset process by pressing and holding the DOWN button again until the desk lowers a little bit more, slightly rises, and stops. Release the button. The new starting height value is saved and your desk is now ready to use.

**NOTE:** The LED display has a +/- 0.1 tolerance.





### Control Panel Lock

Press and hold the “M” button (about 8 seconds) until the LED display switches to “S-” and then to “LOC”. Release the button.

### Control Panel Unlock

Press and hold the “M” button (about 8 seconds) until the LED switches from “LOC” to the height display. Release the button.

### Troubleshooting and Reset

If the legs have no response, your desk may need to be reset. Follow the initial setup instructions and ensure all connections are in the correct location and fully plugged in. If the legs are rising slowly, check the input power connection to make sure it’s secured correctly. If any errors continue, please contact Vari.

### Changing Anti-Collision Sensitivity

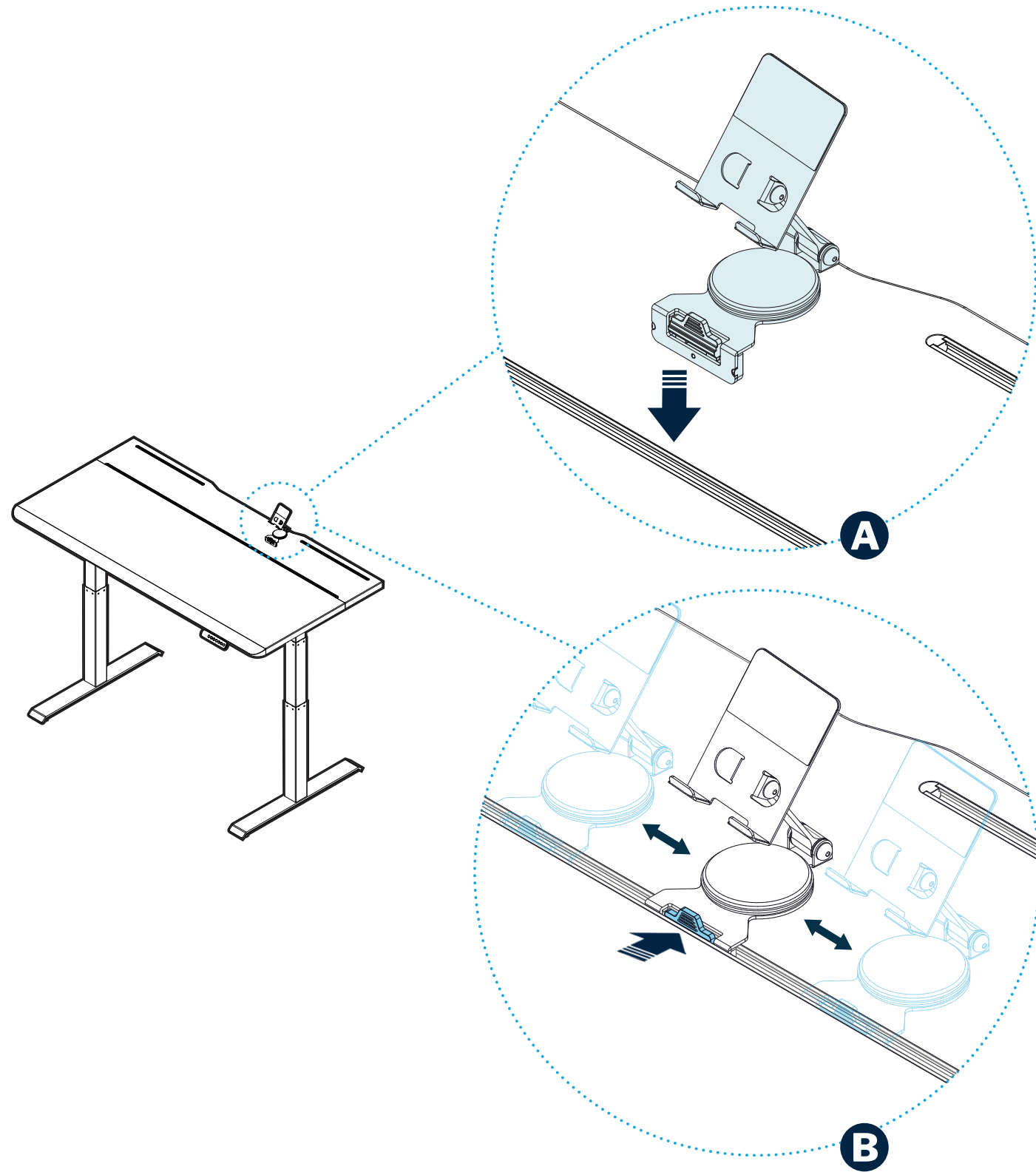
If the desk is bumped or shaken too hard, it can trigger the anti-collision reaction. Follow the below steps to control how much interference/motion is required to trigger the desk anti-collision.

1. Put the control panel into “RST” mode (refer to the System Reset steps on the opposite page).
2. Press and hold the “up” button (about 5 seconds) while the display is flashing “RST”.
3. Choose one of the three sensitivity levels:
  - 10.5 = most sensitive
  - 10.6 = moderately sensitive
  - 10.7 = least sensitive
4. Release the "up" button.
5. Re-press and hold the “up” button again until the desired setting is reached.
6. Release the button and wait for the display to return to “RST”.
7. Conclude the system reset and the setting will be saved.

The default and recommended setting is 10.6. However, if the anti-collision reaction activates excessively or doesn’t activate at all, you can adjust it to your preferences.

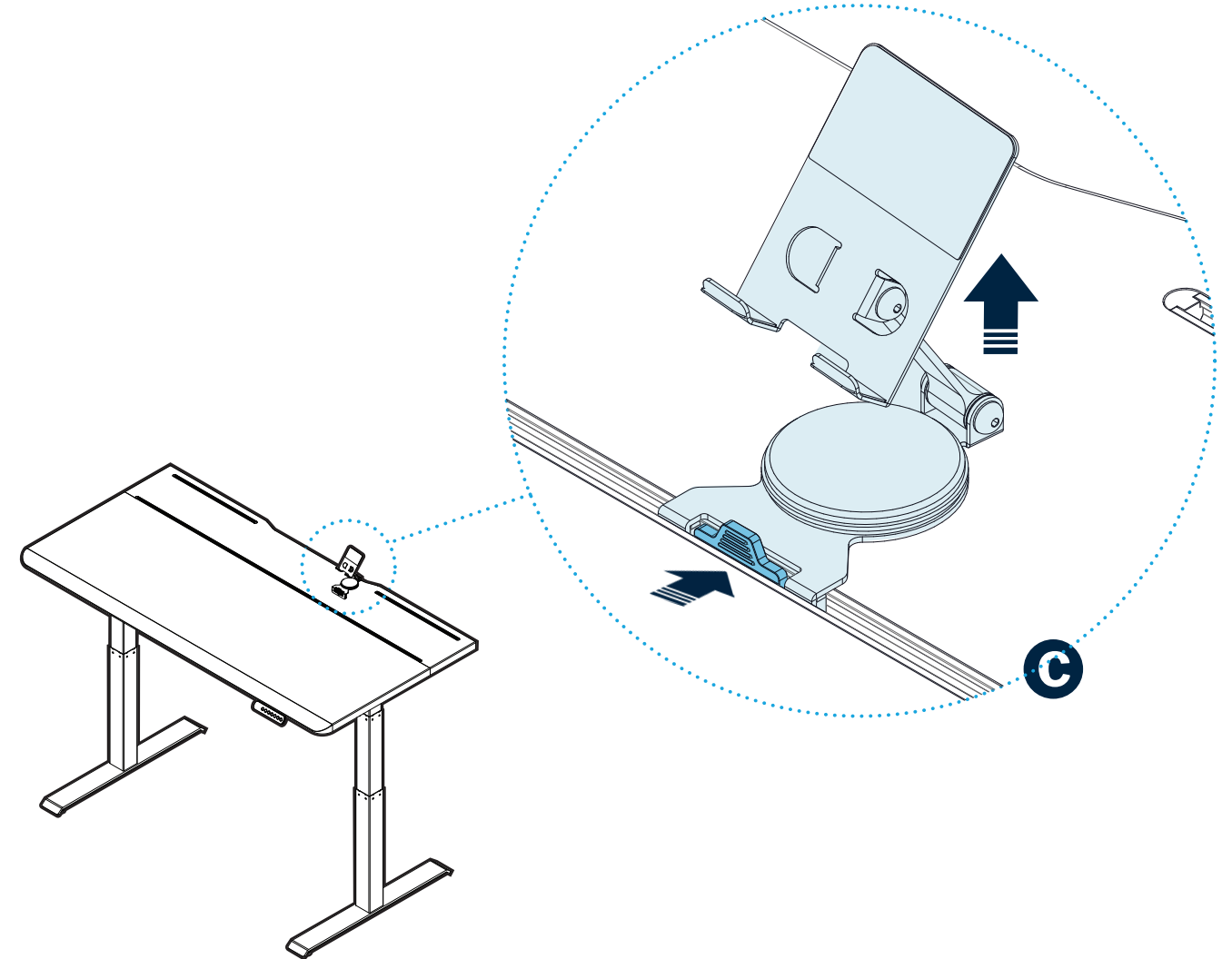
Supplier’s Declaration of Conformity 47 CFR § 2.1077 Compliance Information		
Unique Identifier(s):	Responsible Party – U.S. Contact Information	FCC Compliance Statement
400777 400865 401386 401440	Varidesk, LLC 450 Freeport Parkway Coppell, TX 75019 1-800-207-2587.	This device complies with Part 15 of the FCC Rules. Operation is subject to the following two conditions: (1) This device may not cause harmful interference, and (2) this device must accept any interference received, including interference that may cause undesired operation.

## Attaching Accessories – TechTrack™ System



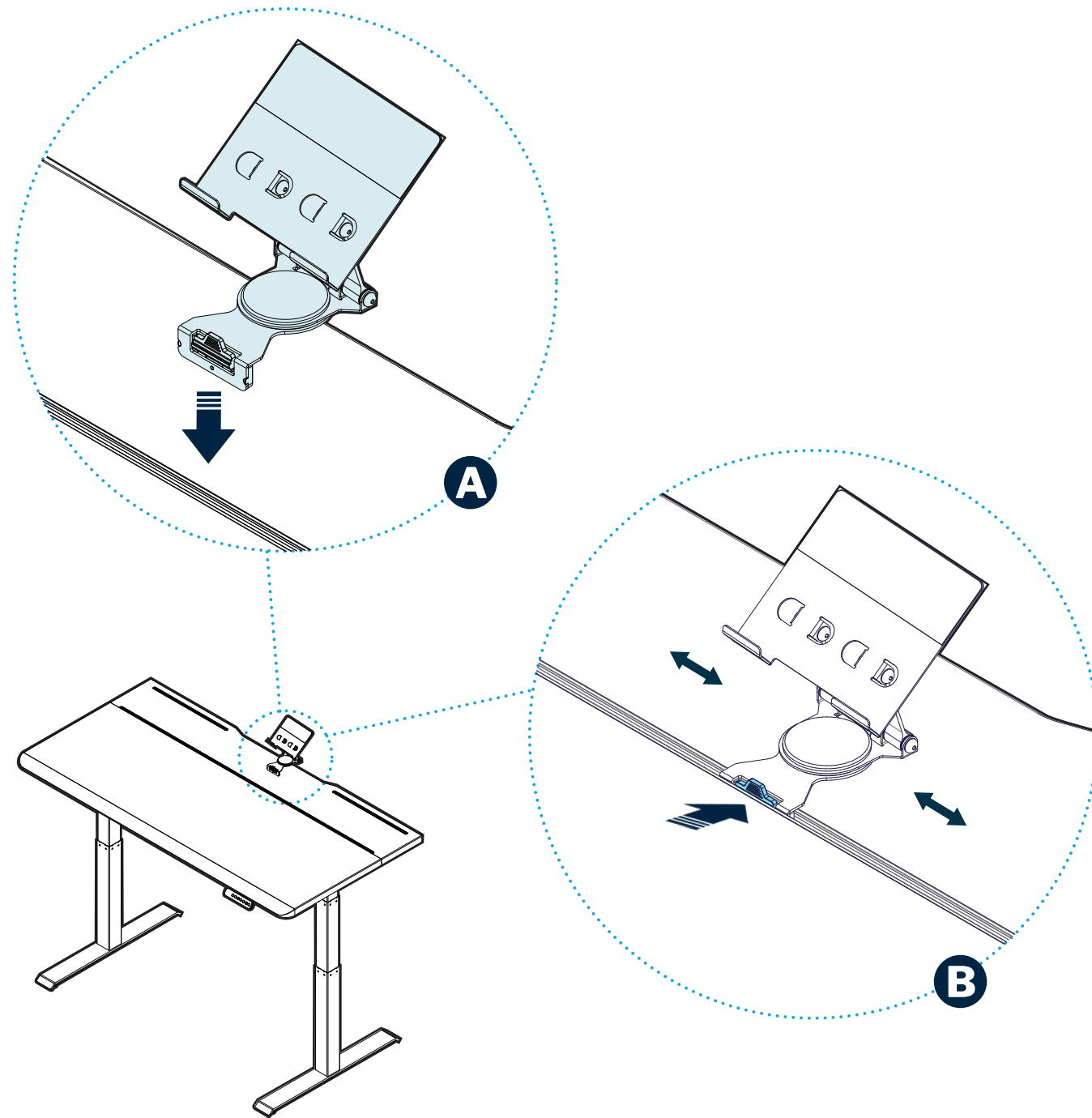
### Phone Holder

- A. Insert the bracket into the TechTrack™ and push down until secure.
- B. To adjust left or right: press the plastic tab, slide, and release.



- C. To remove: press the tab and pull out.

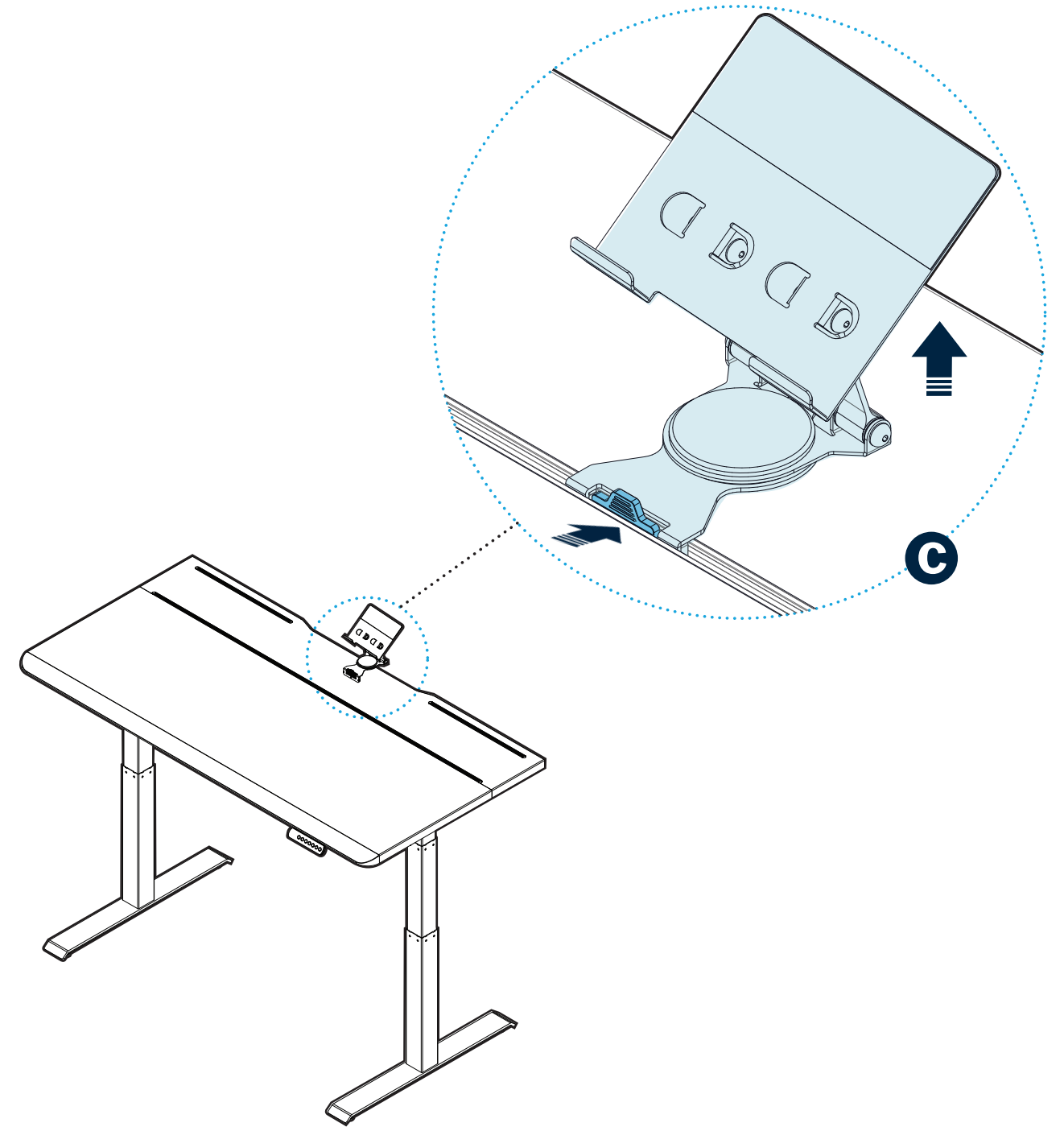
## Attaching Accessories – TechTrack™ System



### Tablet Stand

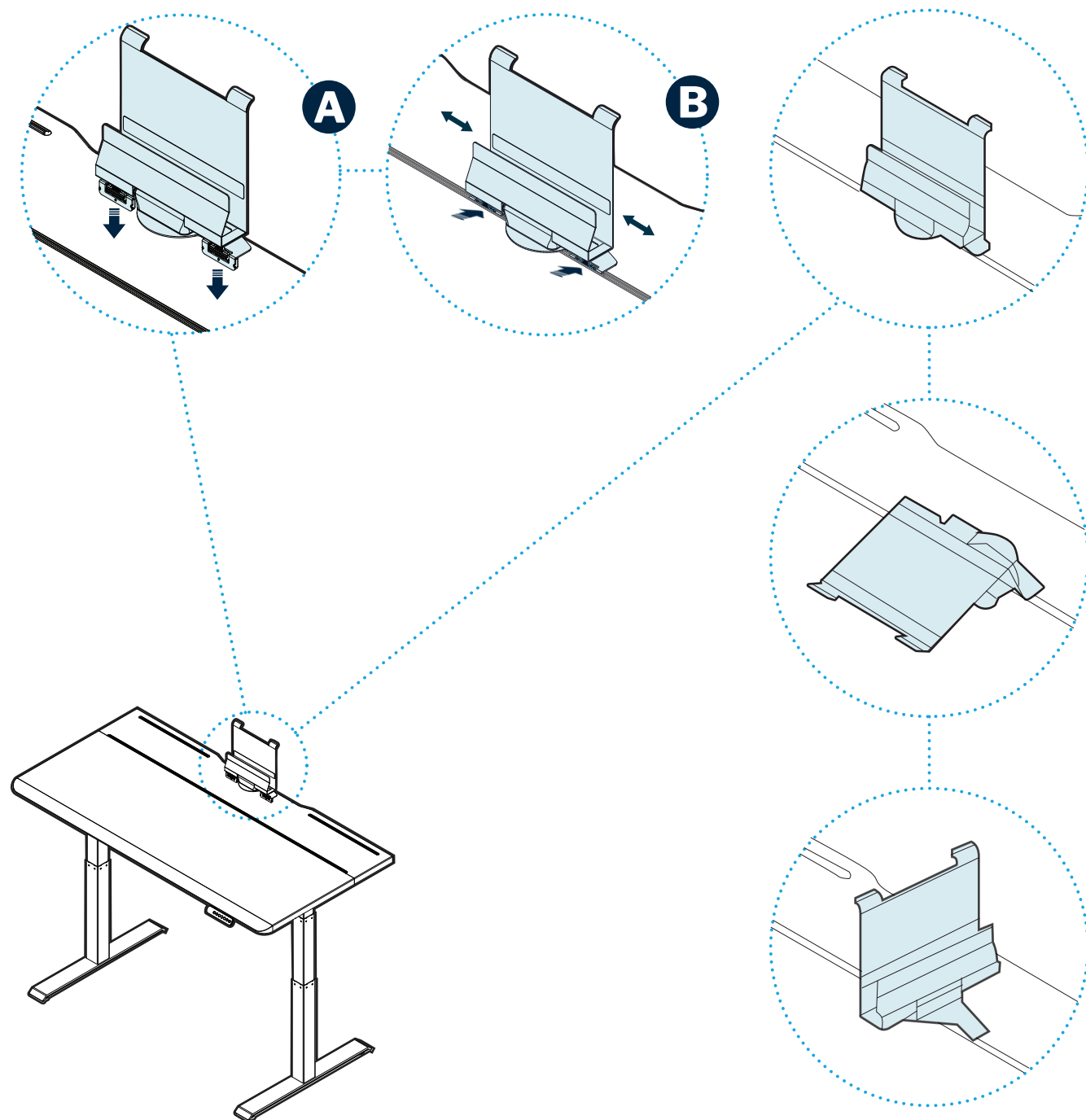
A. Insert the bracket into the TechTrack™ and push down until secure.

B. To adjust: press the plastic tab, slide, and release.



C. To remove: press the tab and pull out.

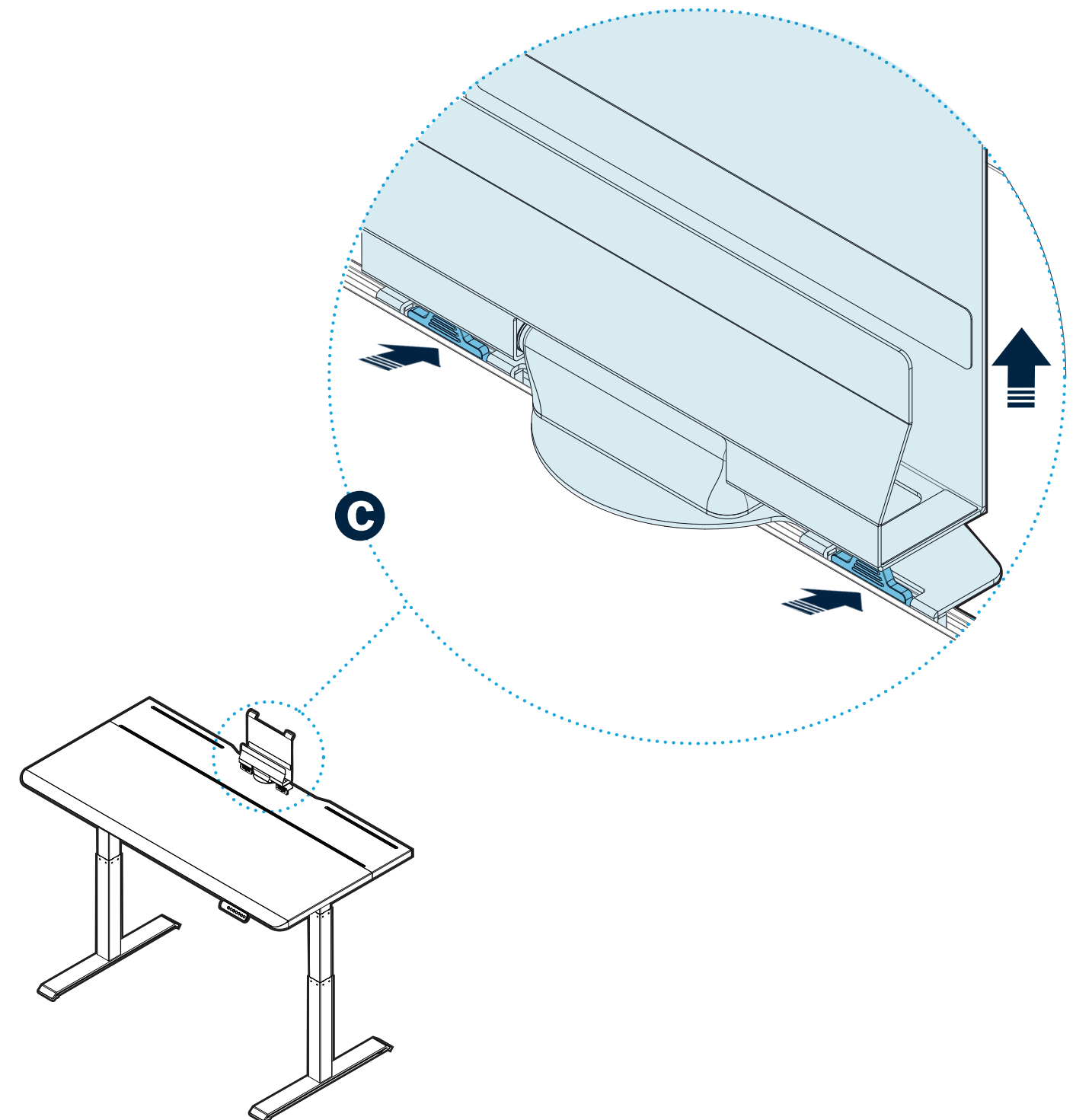
## Attaching Accessories – TechTrack™ System



### Laptop Stand

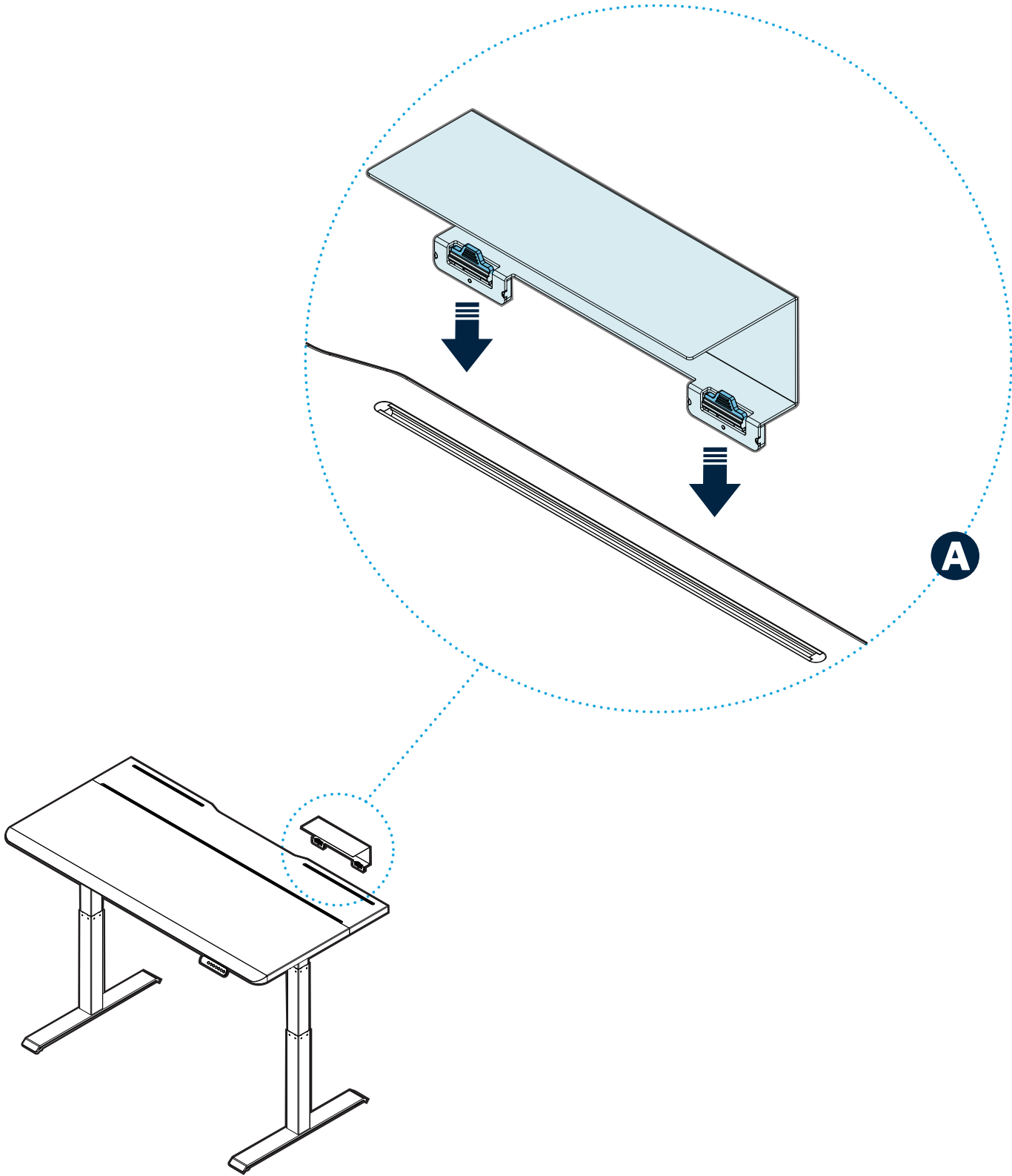
- A. Insert the two brackets into the TechTrack™ and push down until secure.  
B. To adjust: press the plastic tabs, slide, and release.

**Note:** The Laptop Stand can be used upright, rotated, or flat, depending on your preference.

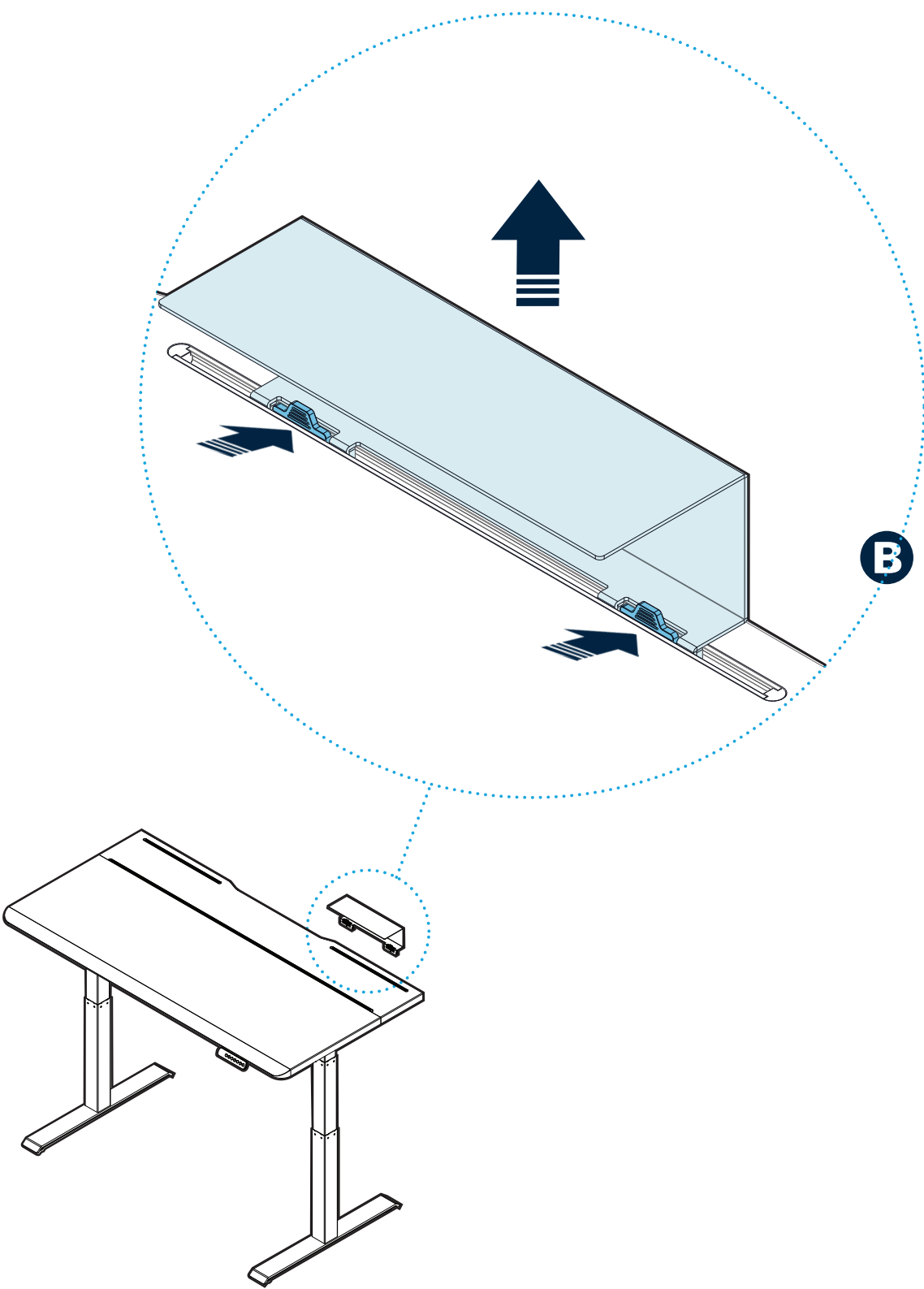


- C. To remove: press the tabs and pull out.

Attaching Accessories – TechTrack™ System



**Shelf**  
A. Insert the two brackets into the TechTrack™ and push down until secure.  
To adjust: press the plastic tabs, slide, and release.



B. To remove: press the tabs and pull out.



CODE CODE	DESCRIPTION DESCRIPTION	TROUBLESHOOTING SOLUTION SOLUTION DE DÉPANNAGE
E01 E02 E03	<b>Table Leg Failure</b> <i>Défaillance du pied de table</i>	Disconnect the leg cables from the control box. Reconnect cables, ensuring all cables are fully connected. Remove excess weight from the desk and then follow below instructions to reset (RST) the desk. If error persists, contact Vari. <i>Débranchez les câbles des pieds du boîtier de commande. Rebranchez les câbles en vous assurant que tous les câbles sont entièrement connectés. Retirez l'excès de poids du bureau, puis suivez les instructions ci-dessous pour réinitialiser (RST) le bureau. Si l'erreur persiste, contactez Vari.</i>
E07 E08	<b>Height Setting Error</b> <i>Erreur de réglage de la hauteur</i>	<b>E07</b> will display if the cable connected to the M1 port is not fully secured; <b>E08</b> will display if the cable connected to the M2 port is not fully secured. Disconnect and reconnect the cable. Reverse the orientation of the control box. Follow the instructions below to reset (RST) the desk. If error persists, contact Vari. <i><b>E07</b> s'affichera si le câble connecté au port M1 n'est pas entièrement sécurisé ; <b>E08</b> s'affichera si le câble connecté au port M2 n'est pas entièrement sécurisé. Débranchez et rebranchez le câble. Inversez l'orientation du boîtier de commande. Suivez les instructions ci-dessous pour réinitialiser (RST) le bureau. Si l'erreur persiste, contactez Vari.</i>
E13	<b>Connection Error</b>	Follow the instructions below to reset (RST) the desk. If the error code remains, check connections. Confirm no pinched or damaged cables. If error persists, contact Vari. <i>Suivez les instructions ci-dessous pour réinitialiser (RST) le bureau. Si le code d'erreur persiste, vérifiez les connexions. Vérifiez qu'aucun câble n'est pincé ou endommagé. Si l'erreur persiste, contactez Vari.</i>
H01	<b>Motor Overuse</b> <i>Surutilisation du moteur</i>	If the desk is raised and lowered continuously for more than 4 minutes or the room temperature is too high, it will display this code and cease working temporarily to protect the mechanism from overheating. Stop adjusting the desk, and resume after 20 minutes. If that does not resolve the issue, lower room temperature. <i>Si le bureau est élevé et abaissé continuellement pendant plus de 4 minutes ou si la température ambiante est trop élevée, il affichera ce code et cessera temporairement de fonctionner pour protéger le mécanisme de la surchauffe. Arrêtez de régler le bureau et reprenez après 20 minutes. Si cela ne résout pas le problème, baissez la température ambiante.</i>
RST RST	<b>System Reset</b> <i>Réinitialisation du système</i>	<b>If the display is showing an ERROR CODE:</b> Make sure all cables are securely connected. Press and hold the down arrow key (about 5 seconds) on the control panel until RST flashes on the screen. Release the down button, and continue with the steps below. <b>If the display is already flashing “RST”:</b> <i>NOTE: If you have the Executive Collection Standing Desk Base, please remove the Cable Management Tray before resetting.</i> Press and hold the down arrow key until the desk reaches the lowest height, raise slightly, and finally displaying 25.0. Do not release the key until 25.0 is shown on the control panel. The desk is now ready to use. <b>NOTE: A hard reset can be performed when a standard reset does not work:</b> Unplug the system from the wall. Unplug all cables from the control box. Hold the down button on the control panel. The display will fade and go dark. This ensures all electrical charges are discharged from the control box. Wait 4 minutes, then plug the components back in. Complete a system reset. <i><b>Si l'écran affiche un CODE D'ERREUR :</b> Assurez-vous que tous les câbles sont branchés correctement. Appuyez et maintenez enfoncée la touche fléchée vers le bas (environ 5 secondes) sur le panneau de commande jusqu'à ce que RST clignote à l'écran. Relâchez le bouton vers le bas et continuez avec les étapes ci-dessous.</i> <i><b>Si « RST » clignote déjà à l'écran :</b> REMARQUE : Si vous avez la base de bureau debout de la collection Executive, veuillez retirer le plateau de gestion des câbles avant de réinitialiser. Appuyez sur la touche fléchée vers le bas et maintenez-la enfoncée jusqu'à ce que le bureau atteigne la hauteur la plus basse, se soulève légèrement et affiche 25.0. Ne relâchez pas la touche avant que 25.0 ne soit affiché sur le panneau de commande. Le bureau est maintenant prêt à être utilisé.</i> <b>REMARQUE : Une réinitialisation matérielle peut être effectuée lorsqu'une réinitialisation standard ne fonctionne pas :</b> Débranchez le système du mur. Débranchez tous les câbles du boîtier de commande. Maintenez le bouton bas du panneau de commande enfoncé. L'affichage s'estompera et s'assombrira. Cela garantit que toutes les charges électriques sont déchargées du boîtier de commande. Attendez 4 minutes, puis rebranchez les composants. Effectuez une réinitialisation du système.



**WARNING:** Do not open any components; there is a danger of electric shock.



**WARNING:** Risk of electric shock. Connect this desk to a properly grounded outlet only.



**WARNING:** Keep plug away from heated surfaces.



**WARNING:** Risk of finger injury—pinching hazard. Use caution when lowering desk.



**CAUTION:** Beverages such as water or coffee could cause product failure if spilled.



**WARNING:** To reduce risk of fire, electric shock, or personal injury, use only indoors and do not install in a wet or damp location.



**WARNING:** Never operate this product if it has a damaged cord or plug, if it is not working properly, if it has been dropped or damaged, or dropped into water. Contact our customer service department during business hours to report any issues. Our customer service team will provide a replacement if necessary.



**WARNING:** To avoid overheating, a protection program is built into the system limiting the legs from moving up and down continuously for more than 2 minutes within any 20 minute period. If the unit overheats, the display will show “H01” or “ERR”.



**WARNING:** Make sure no obstacles are in the desk's path. Make sure the desktop is not touching any walls. Make sure all cords are appropriate length to accommodate the change in height.



**CAUTION:** Keep power cord away from heated surfaces and sharp edges. When the desk is not in use, store the cord underneath the desk.



**CAUTION:** Prolonged exposure to direct sunlight may discolor or distort the desk surface. Limit direct exposure.

• This desk is only intended to be used as described in the instructions, in commercial and household settings. Do not use attachments not recommended by the manufacturer.

• This desk has no user serviceable parts.

• Unplug the desk from outlet before adding or removing any parts.

• The desk edge should be at least 1" (2.5 cm) away from any surfaces or obstacles.



