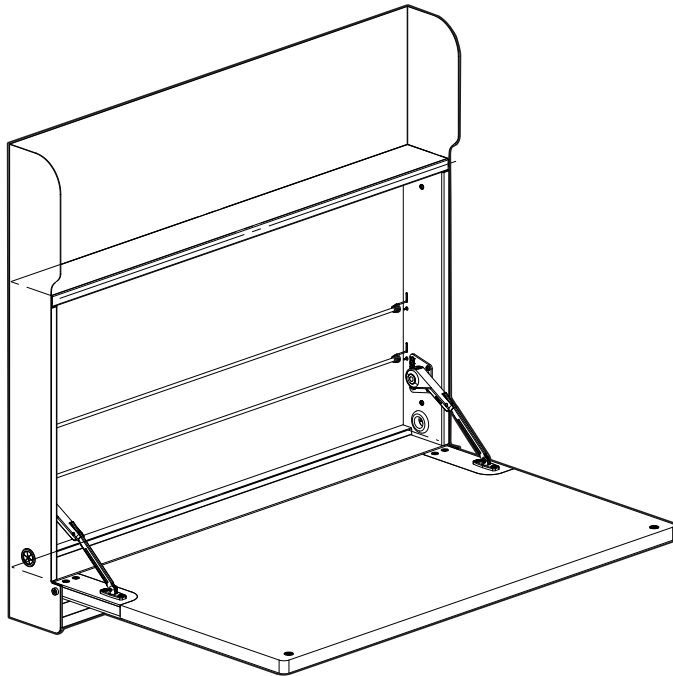


# Hide-Away Desk



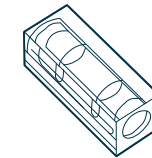
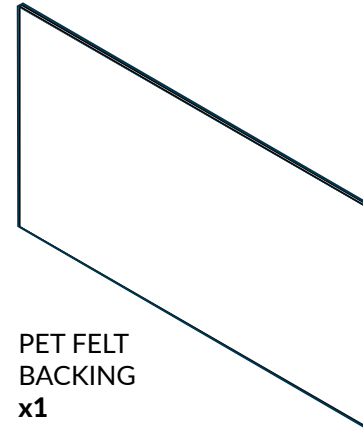
**vari.**®



## TOOLS NEEDED

Phillips Head Screwdriver (not included)  
Power Drill with a Phillips Head Drill Bit

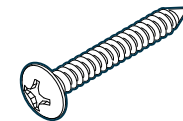
## COMPONENTS



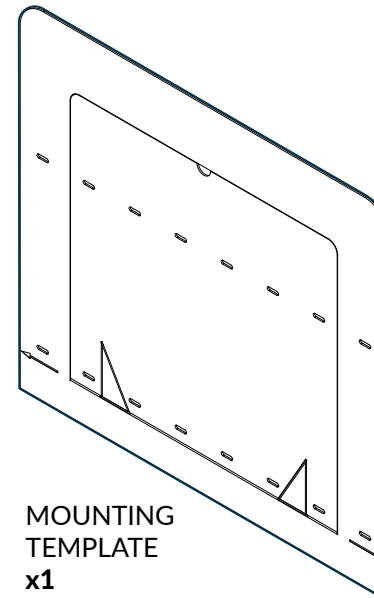
LEVEL  
x1



6.5 x 19 x 1.5MM  
WASHER  
x4



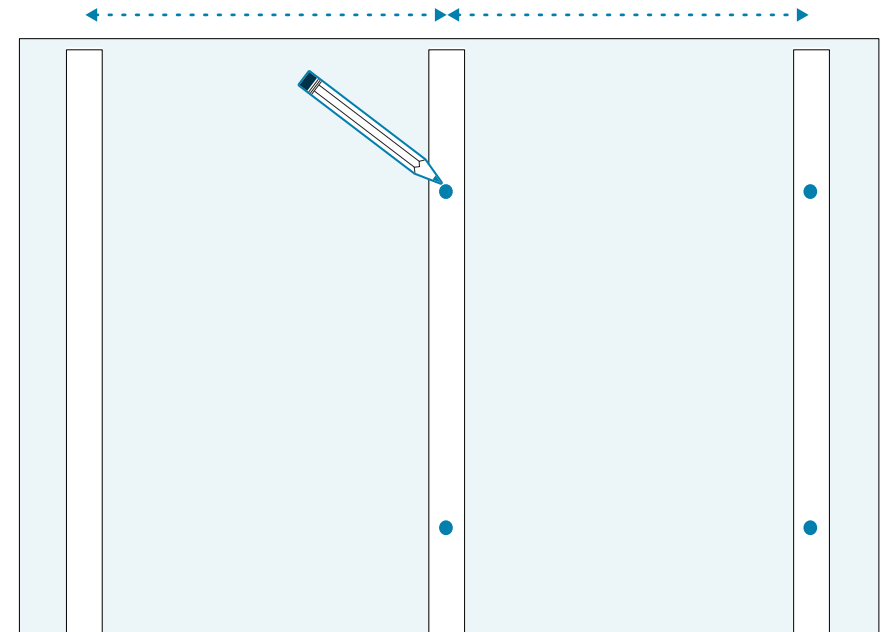
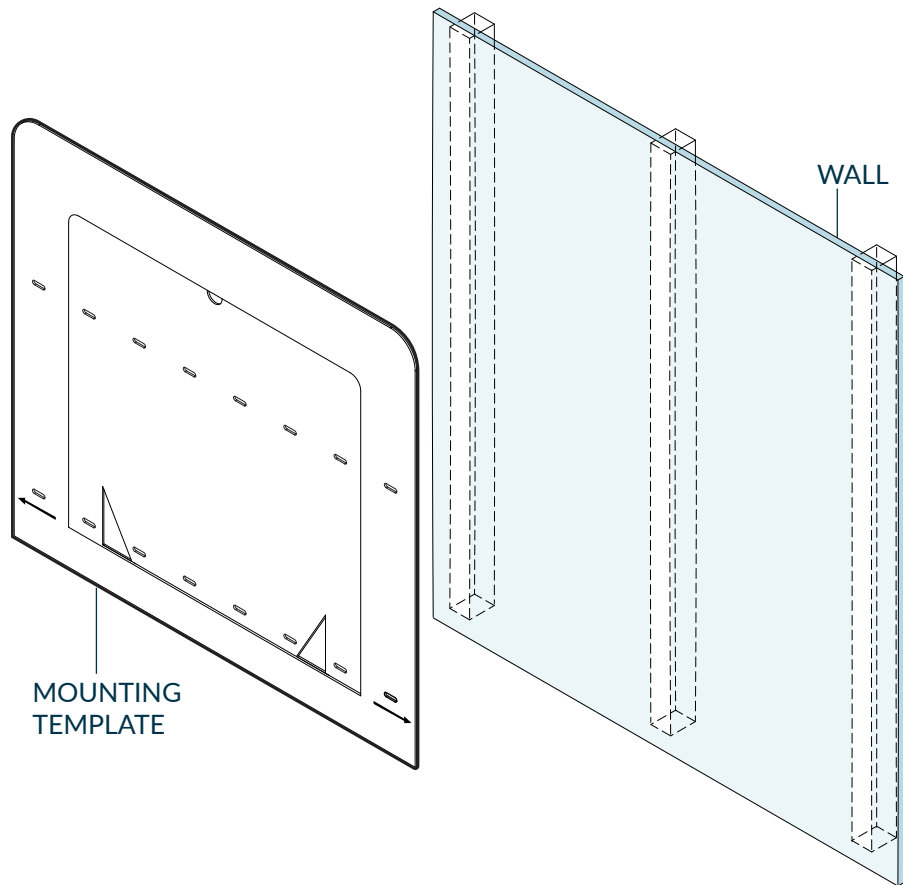
#10 x 1-1/2" SELF-  
TAPPING SCREW  
x4



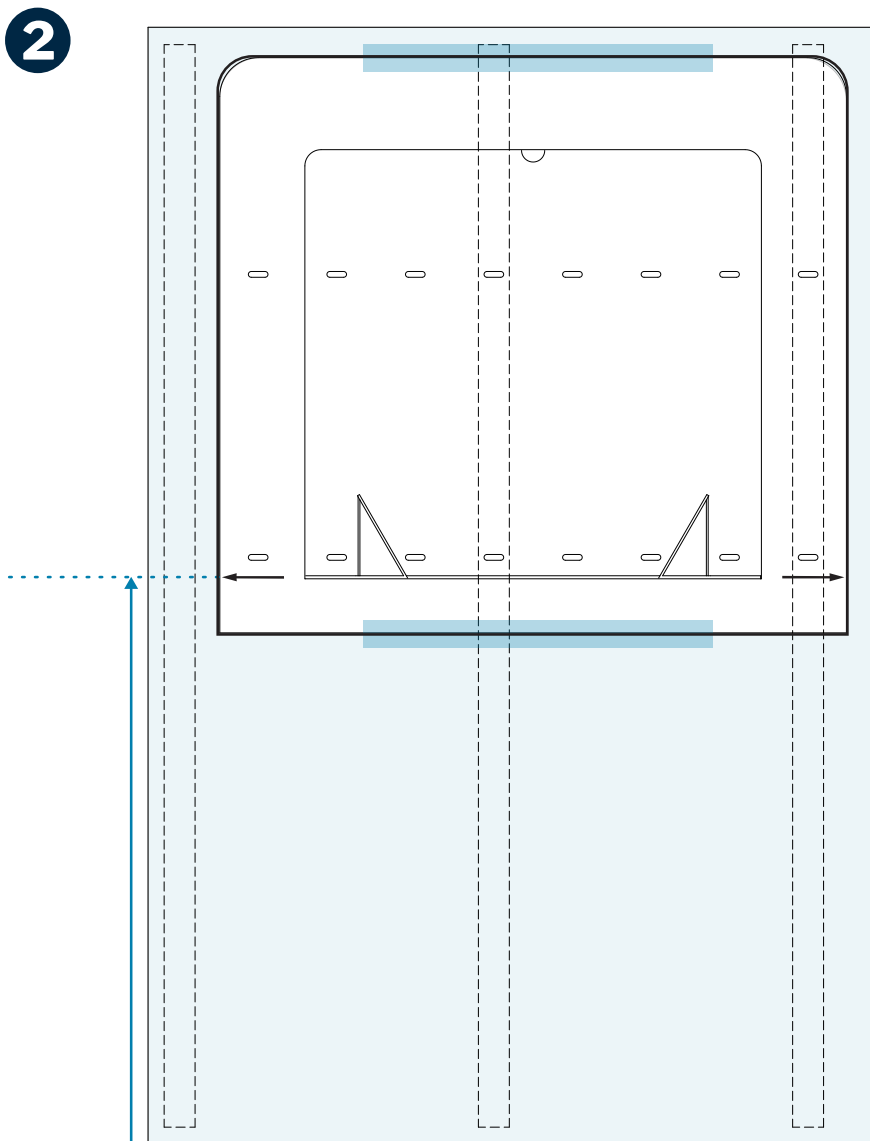
BUNGEE CORD  
x2

# PRE-INSTALLATION

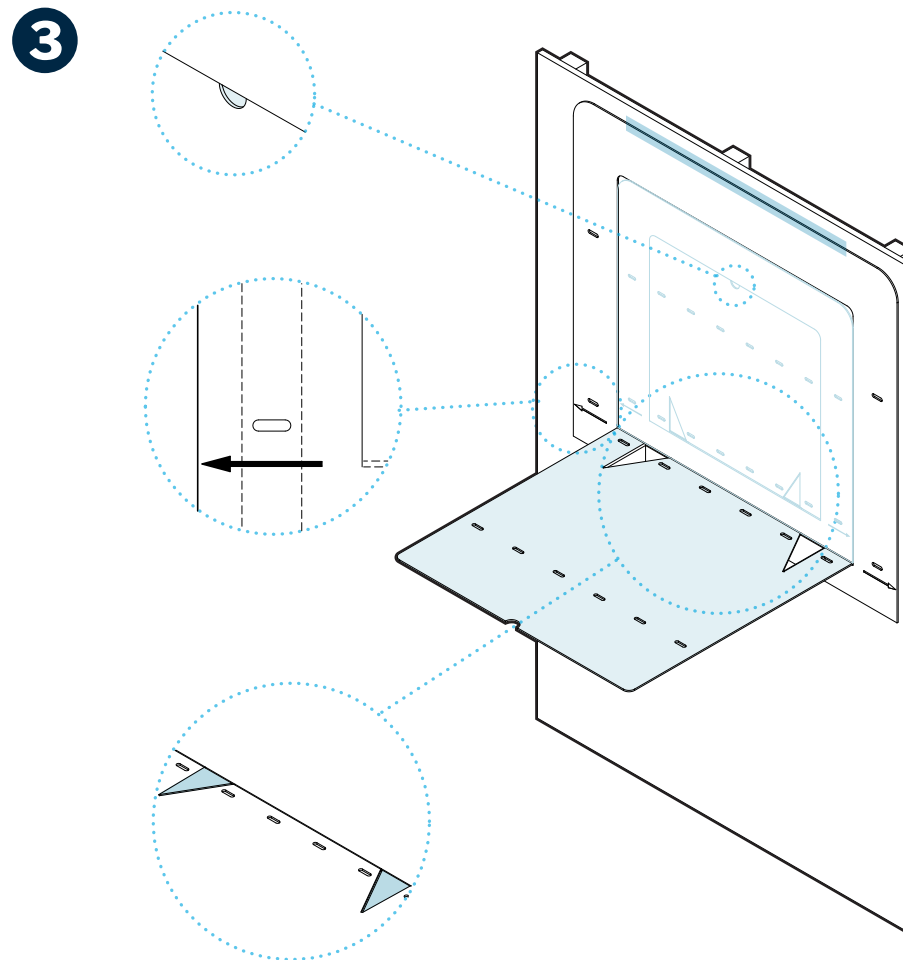
1



Use a stud finder to locate **(2) ADJACENT WALL STUDS**. Mark the center of each stud.



Place the **MOUNTING TEMPLATE** on the wall, aligning its holes with the stud marks from Step 1. Have another person hold it in position or secure it with painter's tape.



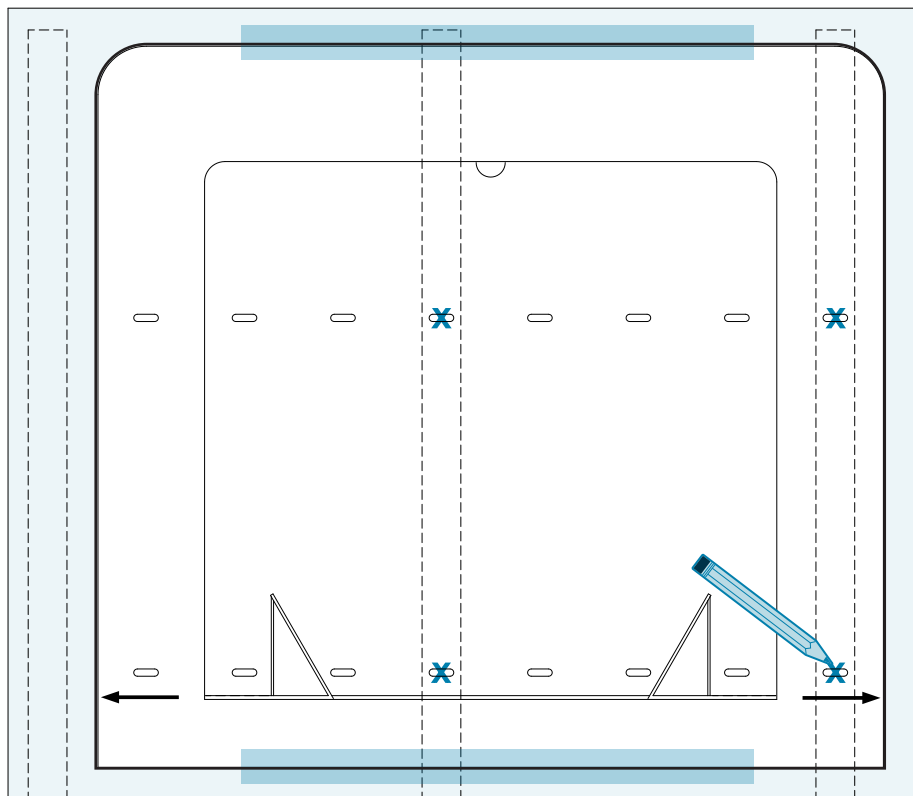
Pull down the mock worksurface and fold out the two triangle supports to keep it flat. For seated height, pull up a chair; for standing height, stand where you plan to use the desk.

Check the template height. Measure from the floor to the black arrow on either side of the template:

- **Recommended Seated Height:** 29"–31"
- **Recommended Standing Height:** 38"–42"

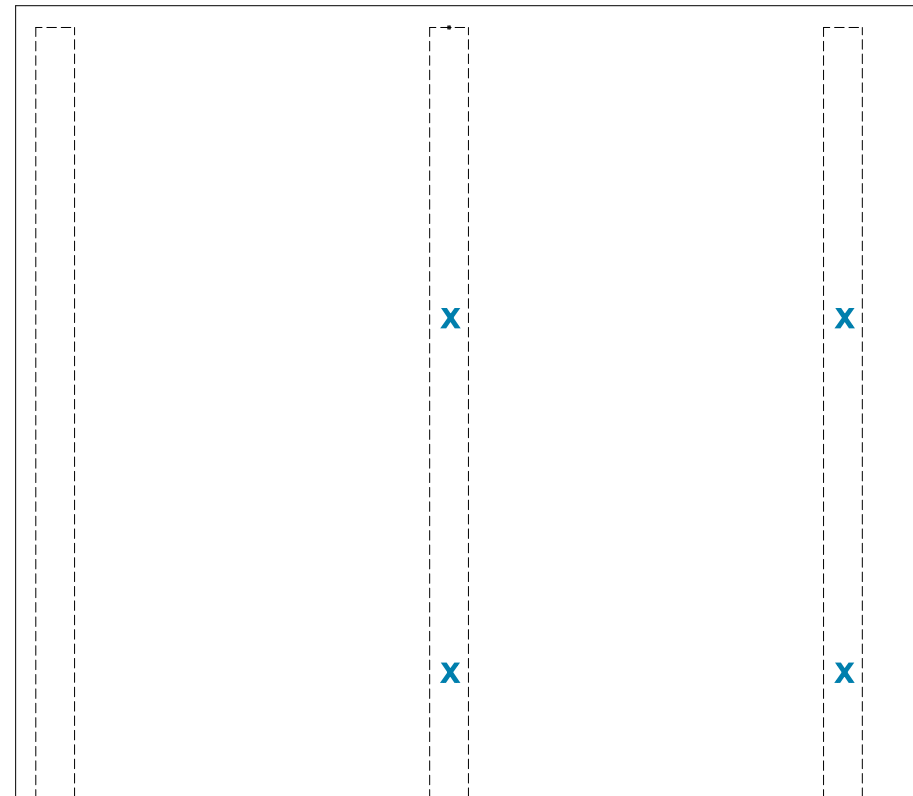
Level the worksurface. Place the included **LEVEL** on the mock worksurface to ensure it's even. Adjust the template as needed.

4



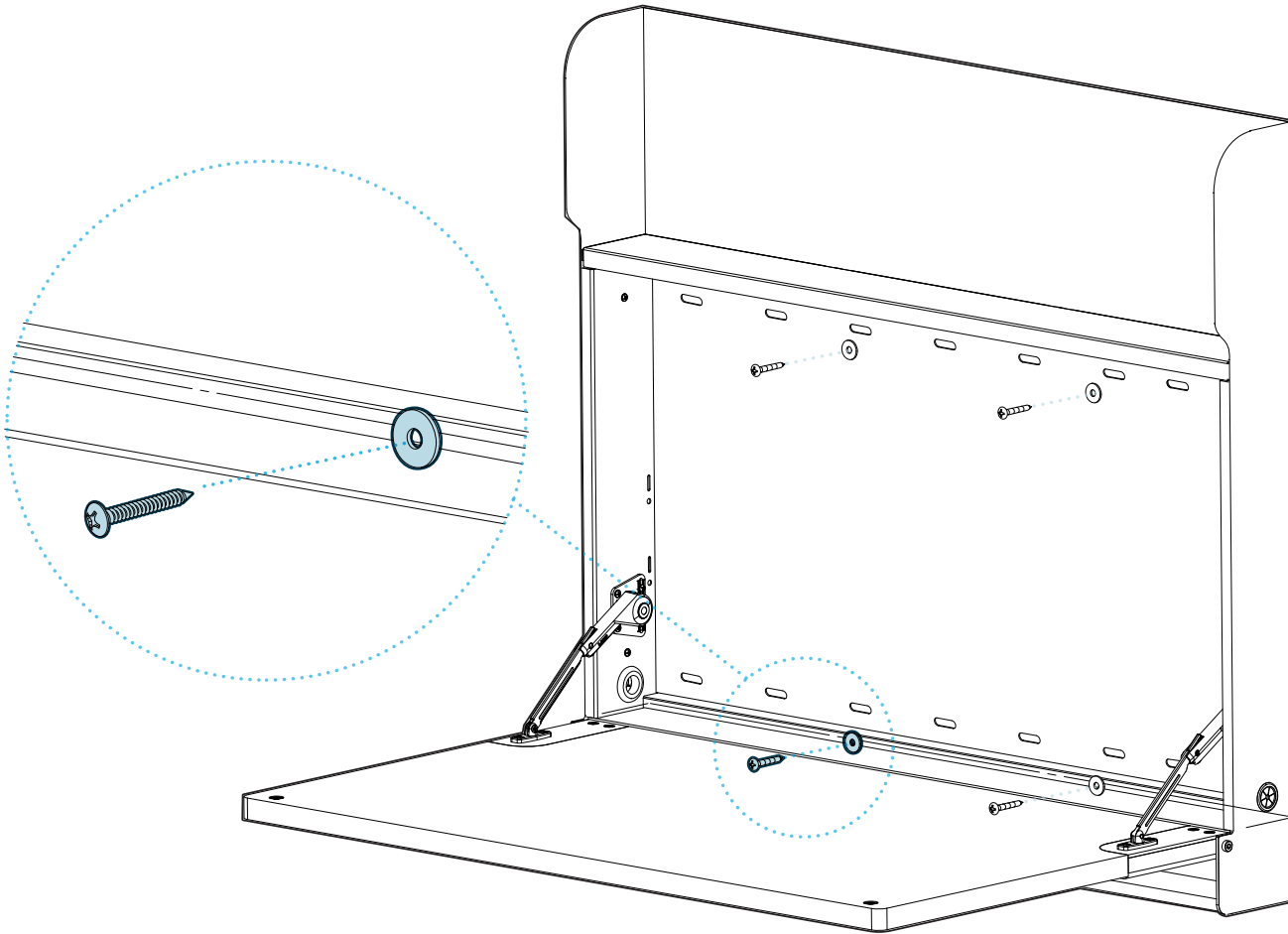
Confirm the final placement and preferred height. Hold the template in position, then mark the mounting holes through it.

5



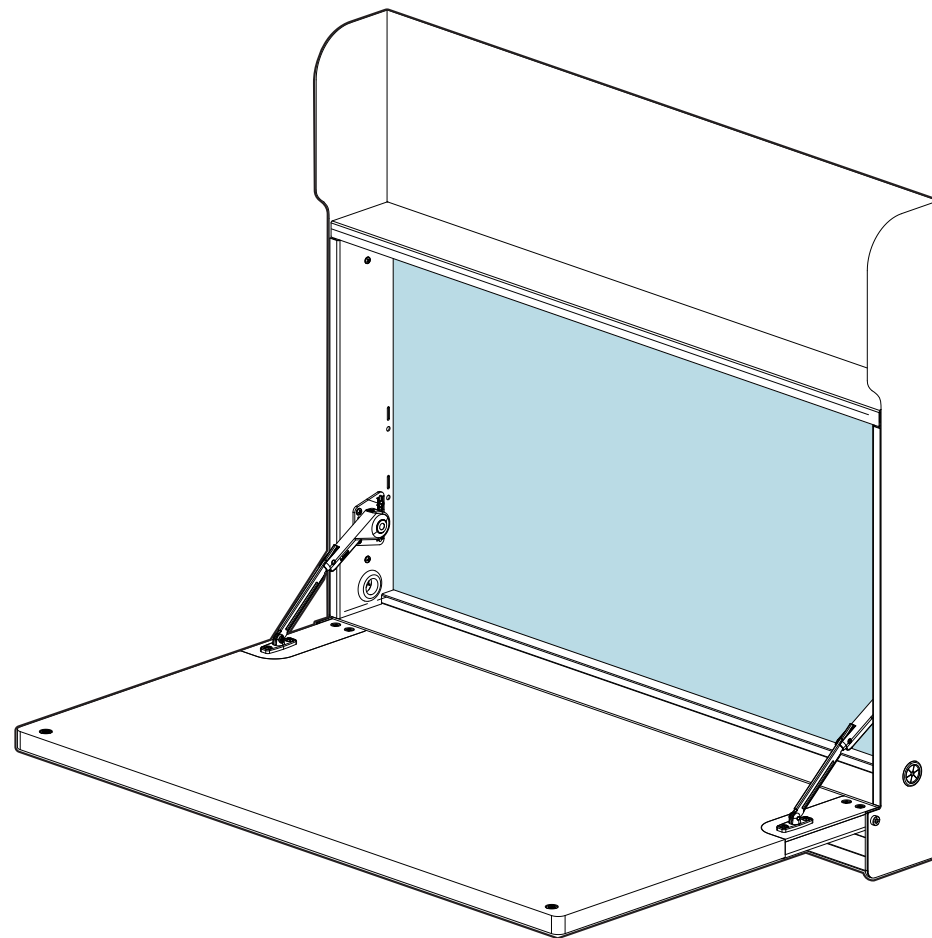
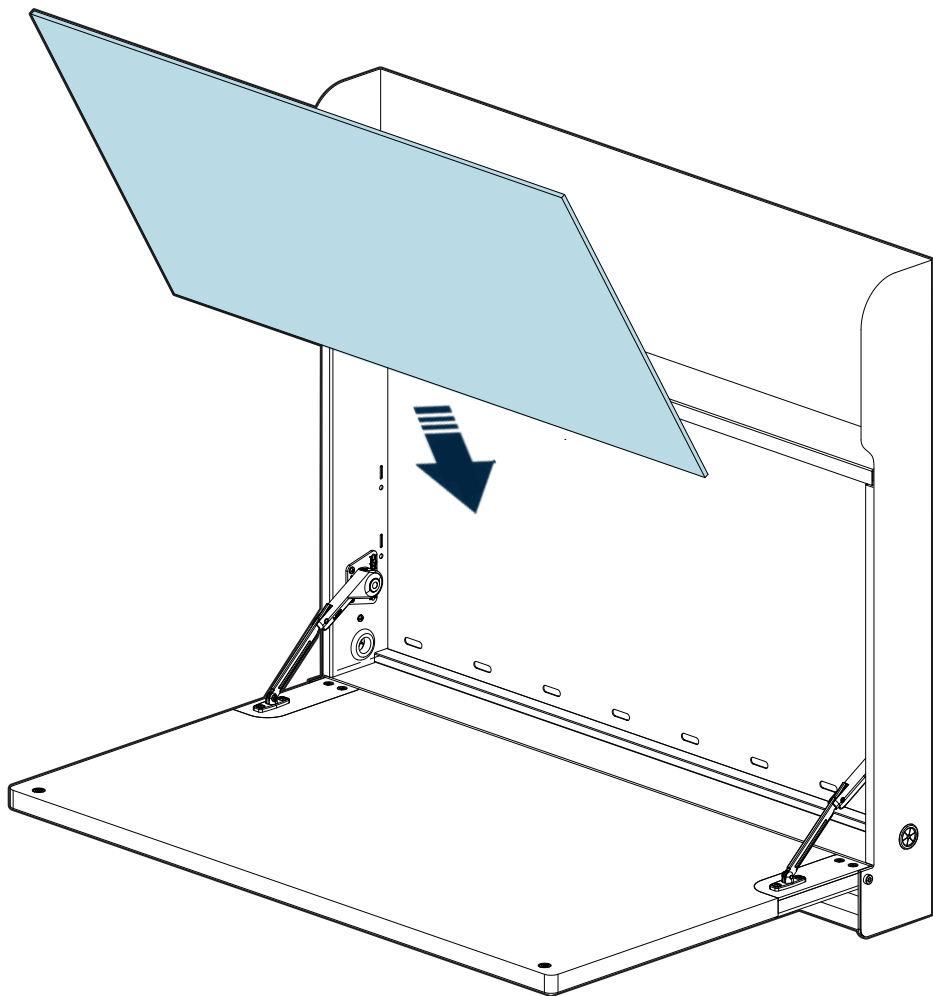
Carefully remove the template from the wall. Leave the markings to help guide final alignment.

6



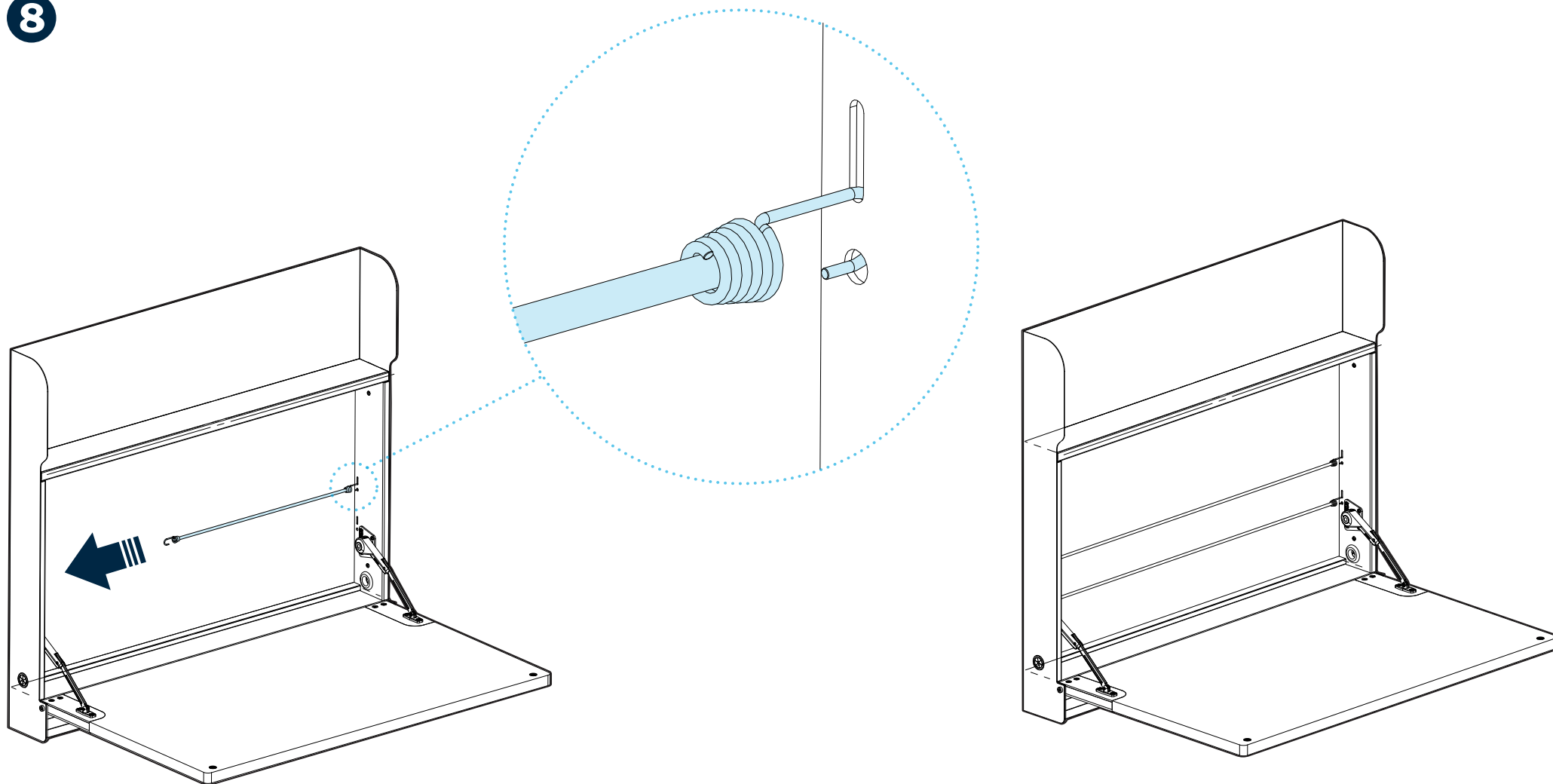
With another person supporting the desk, align it with the wall marks from the previous steps. Secure it to the wall studs by driving the **(4) #10 X 1-1/2" SELF-TAPPING SCREWS** and **WASHERS** through the back panel of the desk. Tighten the screws using a Phillips Head Screwdriver (not included) or Drill with a Phillips Head Drill Bit.

7



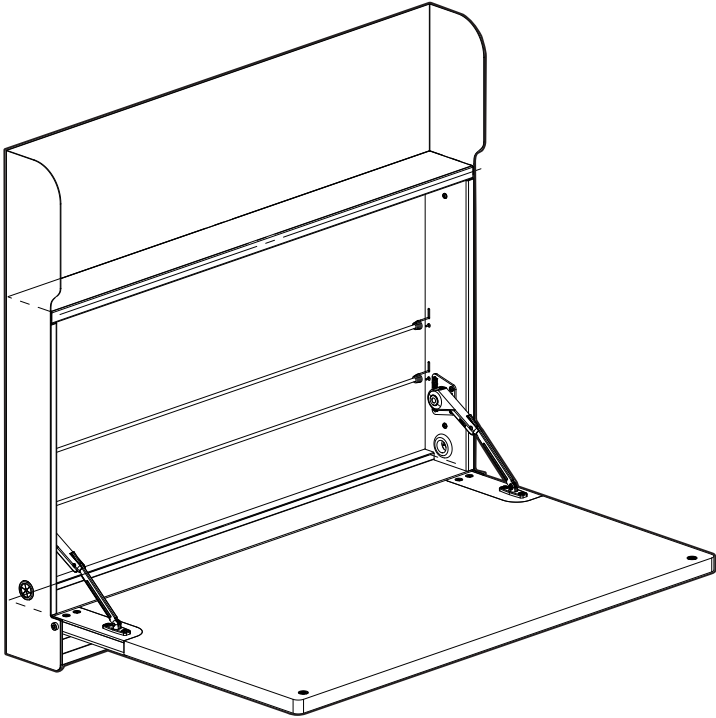
Insert the **PET FELT BACKING** into the desk and secure it to the back panel.

8



The (2) included **BUNGEE CORDS** can be used to secure items in place. Hook one metal end into a bungee slot and ensure it's secure. Pull the other end across and hook it into the opposite slot.

# Hide-away Desk: Safety & Warnings



**WARNING:** Do not exceed a max load of 100 lbs on the worksurface; exceeding this may cause injury or damage.

**WARNING:** Use this furnishing only for its intended use as described in these instructions. Do not use attachments not recommended by the manufacturer.

**CAUTION:** This product must be mounted to a vertical surface. Failure to follow this instruction may result in serious injury and/or property damage.

**WARNING:** Install only into structural wall supports—do not use drywall alone.

**WARNING:** Use only hardware provided; unauthorized substitutes may result in failure.



(800) 207-2587