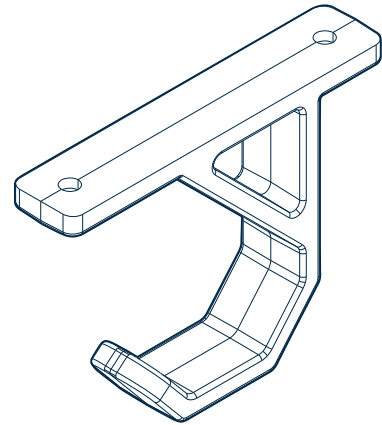


# Undermount Desk Hook

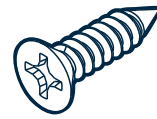


Holds up to  
50 lbs (22.7 kg)

# vari<sup>®</sup>



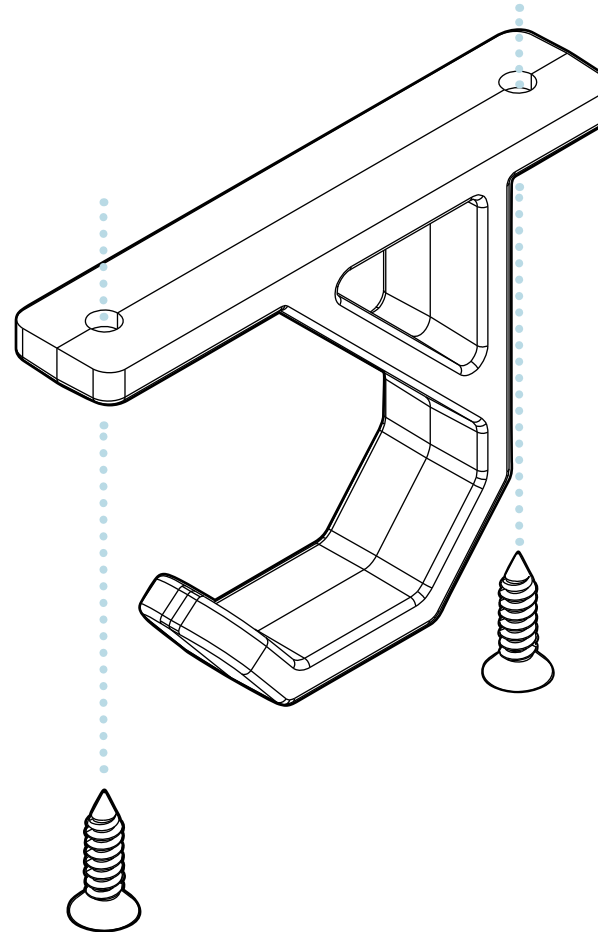
UNDERMOUNT  
DESK HOOK  
**x2**



(#10) 3/16" X 3/4"  
TAPPING SCREW  
**x4**

## Tools Needed *(Not Included)*

- PHILLIPS SCREW DRIVER
- POWER DRILL WITH PHILLIPS HEAD BIT



**NOTE:** Prior to installation, check for any obstructions underneath the worksurface that might hinder proper product function. If installing on a non-Vari product, ensure the worksurface is at least 20mm (0.78") in thickness to ensure you don't drill too far.

**NOTE:** When installing on a Vari<sup>®</sup> Electric Standing Desk with ComfortEdge™, position the hook at least 0.5" back from the front edge to avoid drilling through the worksurface.

Determine the desired position for the hook under the worksurface, ensuring there is enough clearance for proper function. Using a Phillips head screwdriver or a power drill with a Phillips head bit (not included), secure the hook to the worksurface with **TWO (#10) 3/16" X 3/4" TAPPING SCREWS**.

