

Haven Collection

vari®



Designed for flexible configurations, the armless chair, bench, and ottomans allow expansion and reconfiguration as spaces evolve while providing adaptable seating and surface solutions.

Additional Details

- Designed for Modular Expansion Capability
- Reinforced Engineered Hardwood Frame with Web Suspension
- High-Resilience Foam Core
- Hard-Top Ottoman Features Easy-to-Clean Laminate Top
- Ships Fully Assembled with Freight Delivery
- 10-Year Limited Warranty
- Armless Chair, Bench, and All Ottomans Each Support up to 350 lb (158.75 kg)



HAVEN ARMLESS CHAIR

Available in **Fine Wine**, **Navy**, or **Soot**



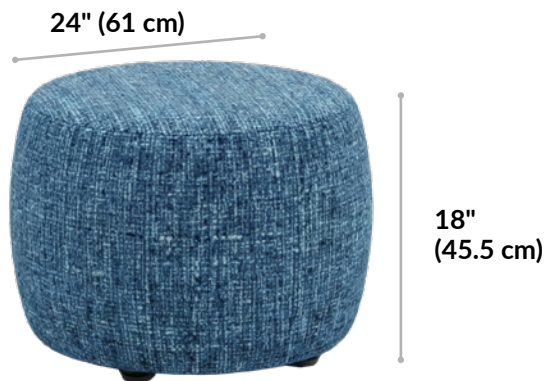
HAVEN UPHOLSTERED BENCH

Available in **Firefinch**, **Navy**, or **Crow**



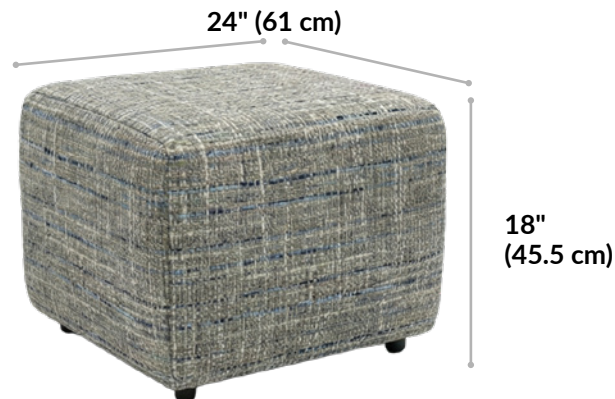
HAVEN ROUND OTTOMAN

Available in **Ruby**, **Navy**, or **Bluebird**



HAVEN SQUARE OTTOMAN

Available in **Firefinch** or **Sparrow**



HAVEN HARD-TOP OTTOMAN

Available in **Navy**/**Walnut**

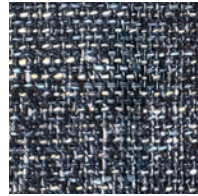


Fabric Details and Swatches



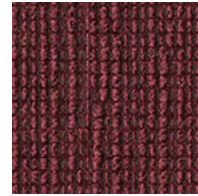
BLUEBIRD¹

Haven Round Ottoman



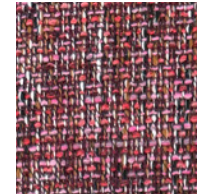
CROW¹

Haven Upholstered Bench



FINE WINE¹

Haven Armless Chair



FIREFINCH¹

*Haven Upholstered Bench
Haven Square Ottoman*



NAVY¹

*Haven Armless Chair
Haven Upholstered Bench
Haven Hard-Top Ottoman
Haven Round Ottoman*



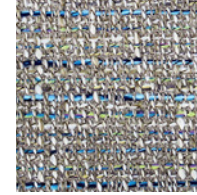
RUBY²

Haven Round Ottoman



SOOT²

Haven Armless Chair



SPARROW¹

Haven Square Ottoman

FABRIC COMPOSITION

¹ 100% Polyester with Synthetic Latex Backing

² 98% Polyester, 2% Nylon with Synthetic Latex Backing

FABRIC COMPLIANCE AND DURABILITY

- Abrasion Resistance Suitable for Heavy-Use Environments – 95,000–100,000 Double Rubs
- Class 4 Lightfastness (40–100 hours) – Resistant to Fading under Light Exposure
- Class 3 (Wet) or Class 4 (Dry) Colorfastness – Strong Resistance to Color Transfer under Normal Use Conditions
- All Fabrics Meet the Standards Flammability Compliance (CA 117-2013, UFAC Class 1, and NFPA 260 Class 1) and Are Suitable for Use in Office and Commercial Environments

FABRIC STAIN RESISTANCE

Treated with iClean Nano Technology for a High-Performance Stain-Repellent Finish

FABRIC CARE & MAINTENANCE

1. Vacuum upholstery before cleaning.
2. Blot spills immediately using a soft cloth.
3. Use a damp cloth or sponge (water only).
4. Work from the outer edge toward the center of the stain.
5. Blot dry using clean paper towels.

Avoid harsh chemicals or aggressive scrubbing.

Wood Swatch



WALNUT

Haven Hard-Top Ottoman

COMPOSITION

Laminate

CARE & MAINTENANCE

To clean the surface, use a damp cloth or sponge and a mild soap or detergent. Rinse thoroughly with warm water and wipe dry.