

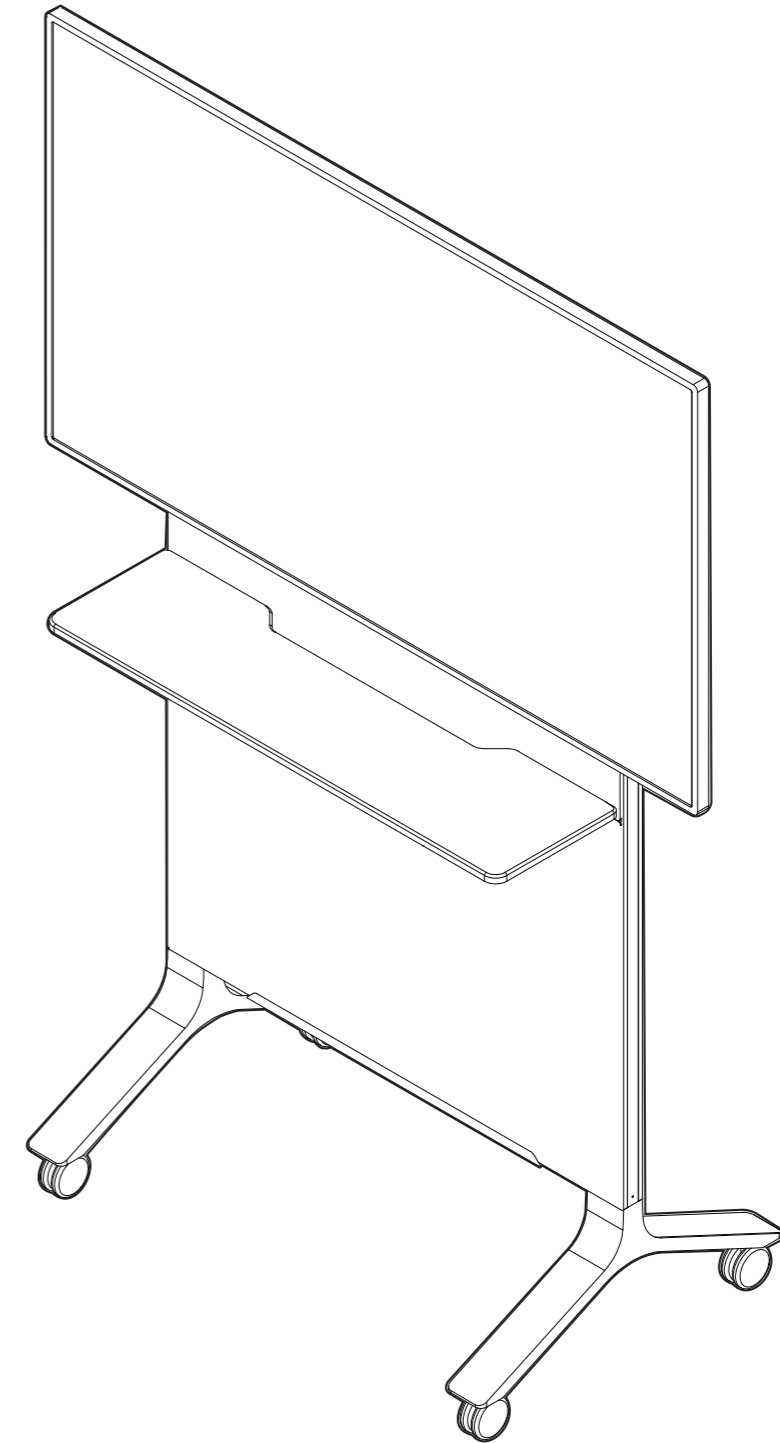
Mobile Media Station



Shelf Weight
Capacity
20 lbs (9.07 kg)



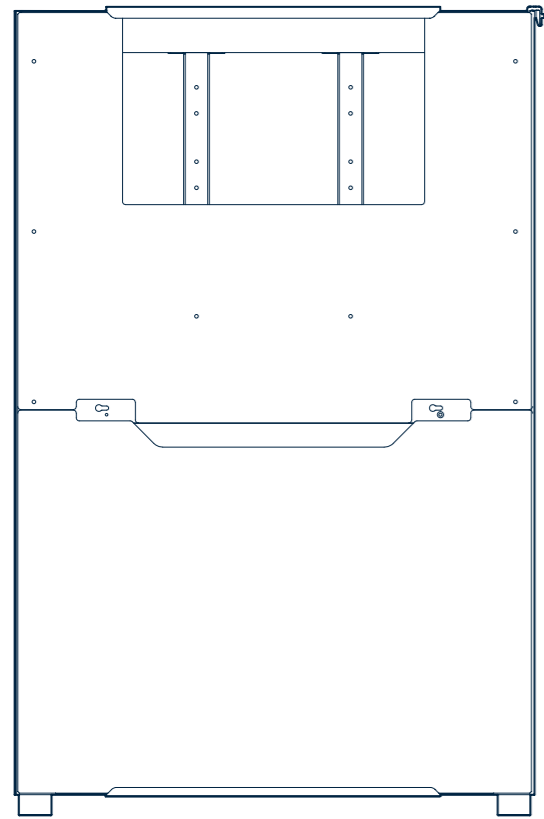
32" - 65"
Screen Size



vari.[®]

 (800) 207-2587

BOX 1 OF 2



BOARD
x1



STRAIGHT EDGE
x1



SHELF
x1



C M8 WASHER
x8



D M5X6
x4



E M6X14
x6



F M6 WASHER
x6



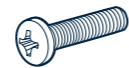
G M6 LOCK WASHER
x2



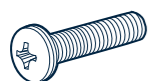
H M6X14
x4



I M8X16
x4



J M6X30
x4



K M8X35
x4



L D15D8X5
x4



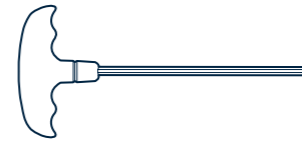
M D15XD8X15
x4



5MM ALLEN KEY
x1



LEGS
x2



T-HANDLE
x1



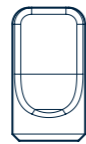
DART MAGNET
x3



ROUND MAGNET
x3



MARKER CUP
x1



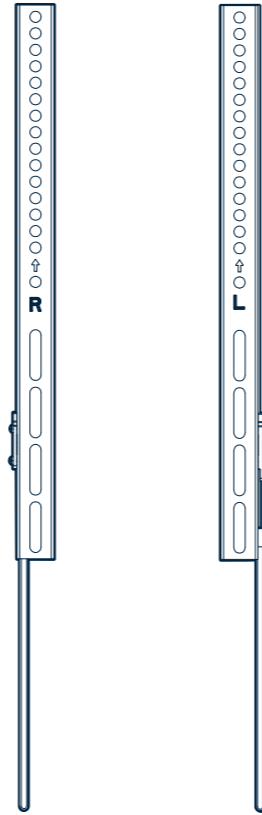
THUMB MAGNET
x3



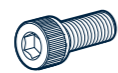
WALL BRACKET 1
x2



WALL BRACKET 2
x2



RIGHT AND LEFT TV BRACKET
x1

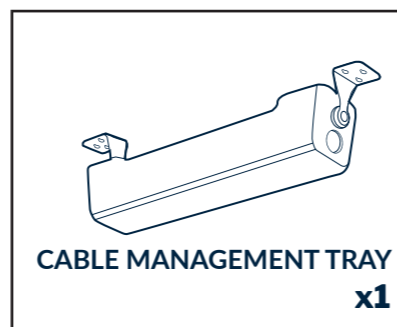


A M8X16
x4



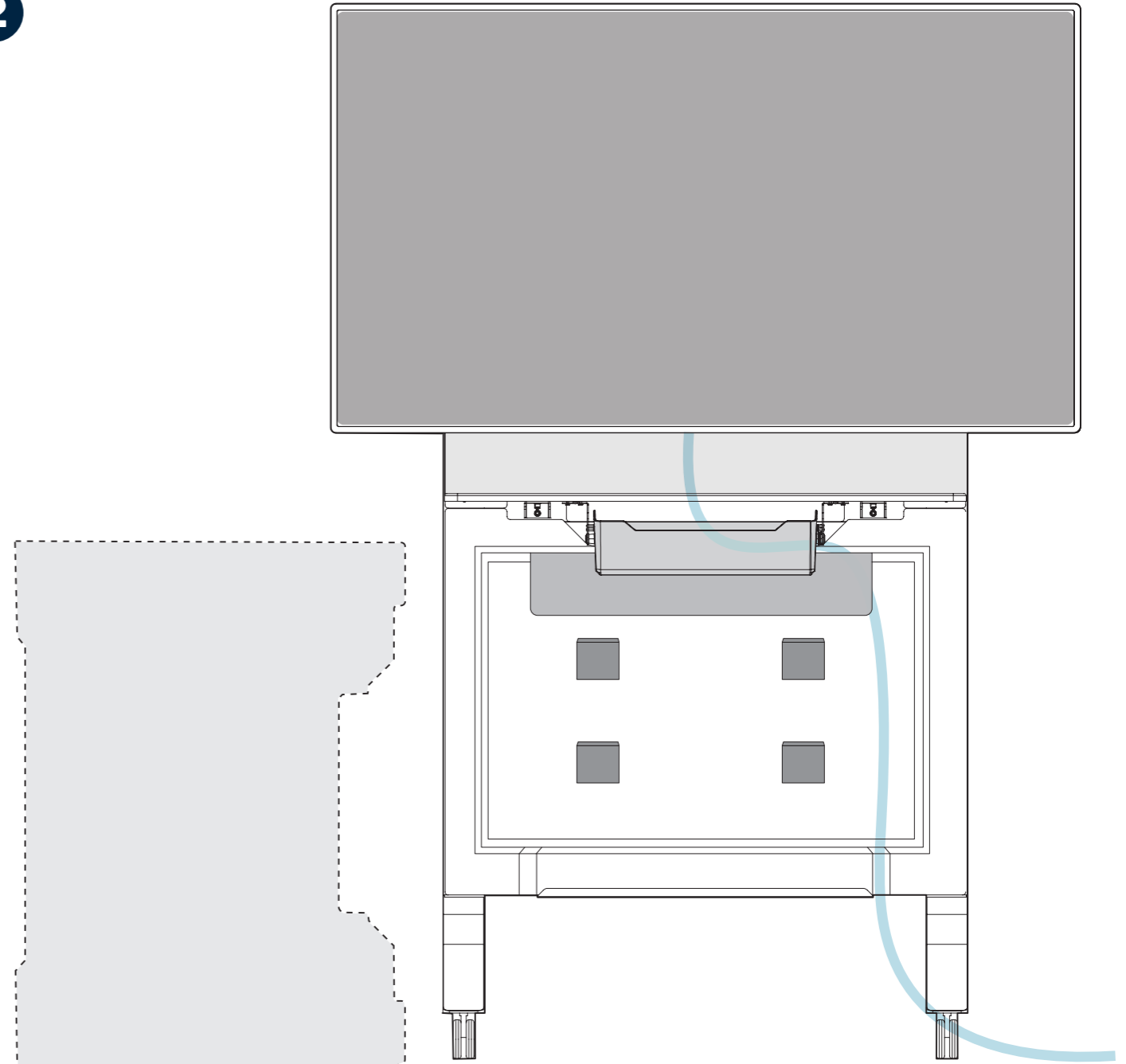
B M8 LOCK WASHER
x4

BOX 2 OF 2



CABLE MANAGEMENT TRAY
x1

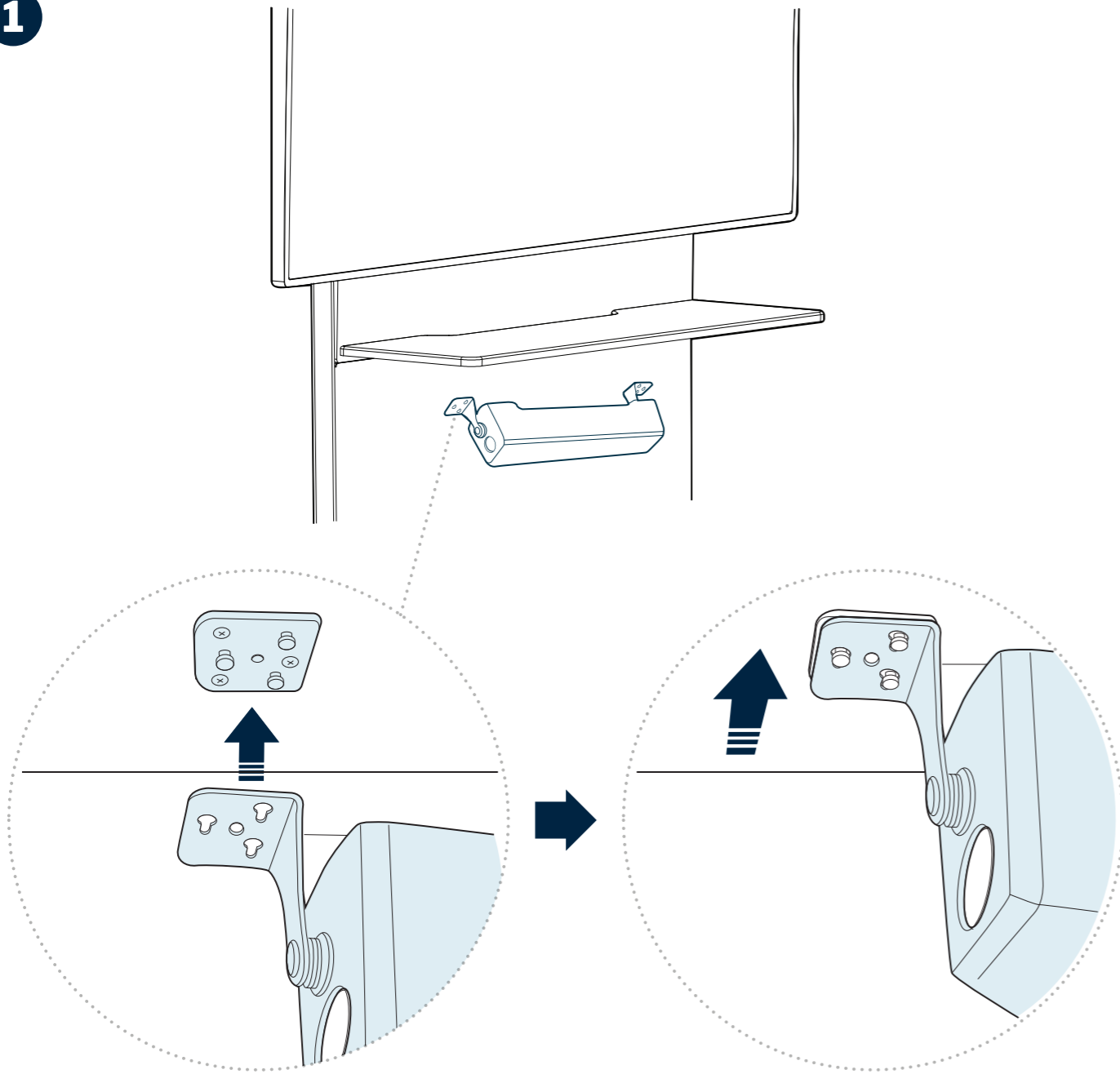
2



The lower panel is removable. To manage the TV power cord remove the panel and then run the power cord through the cable management tray and the back of the removable panel. Siphon it through the bottom space provided to make it accessible to an outside power outlet.

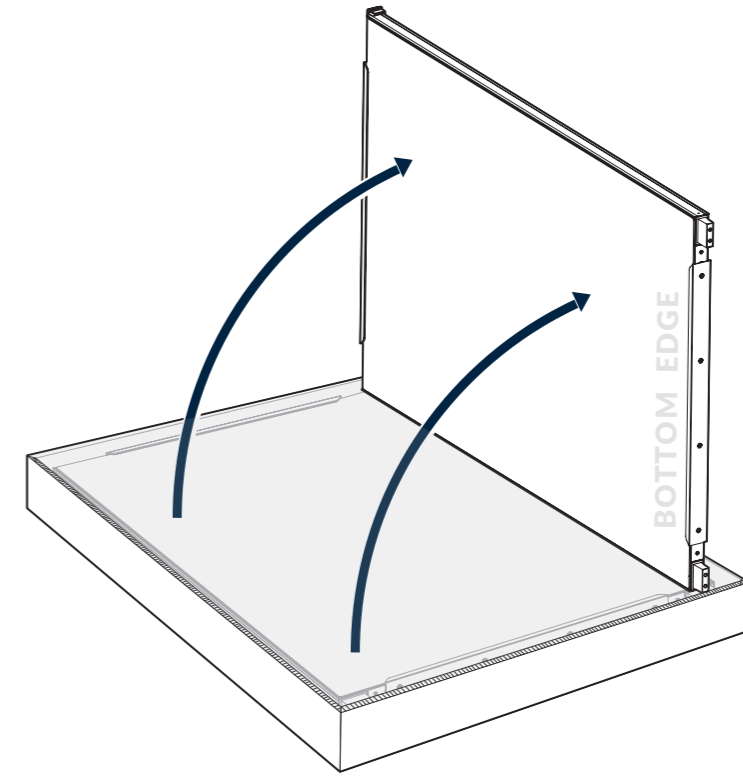
CABLE MANAGEMENT TRAY

1



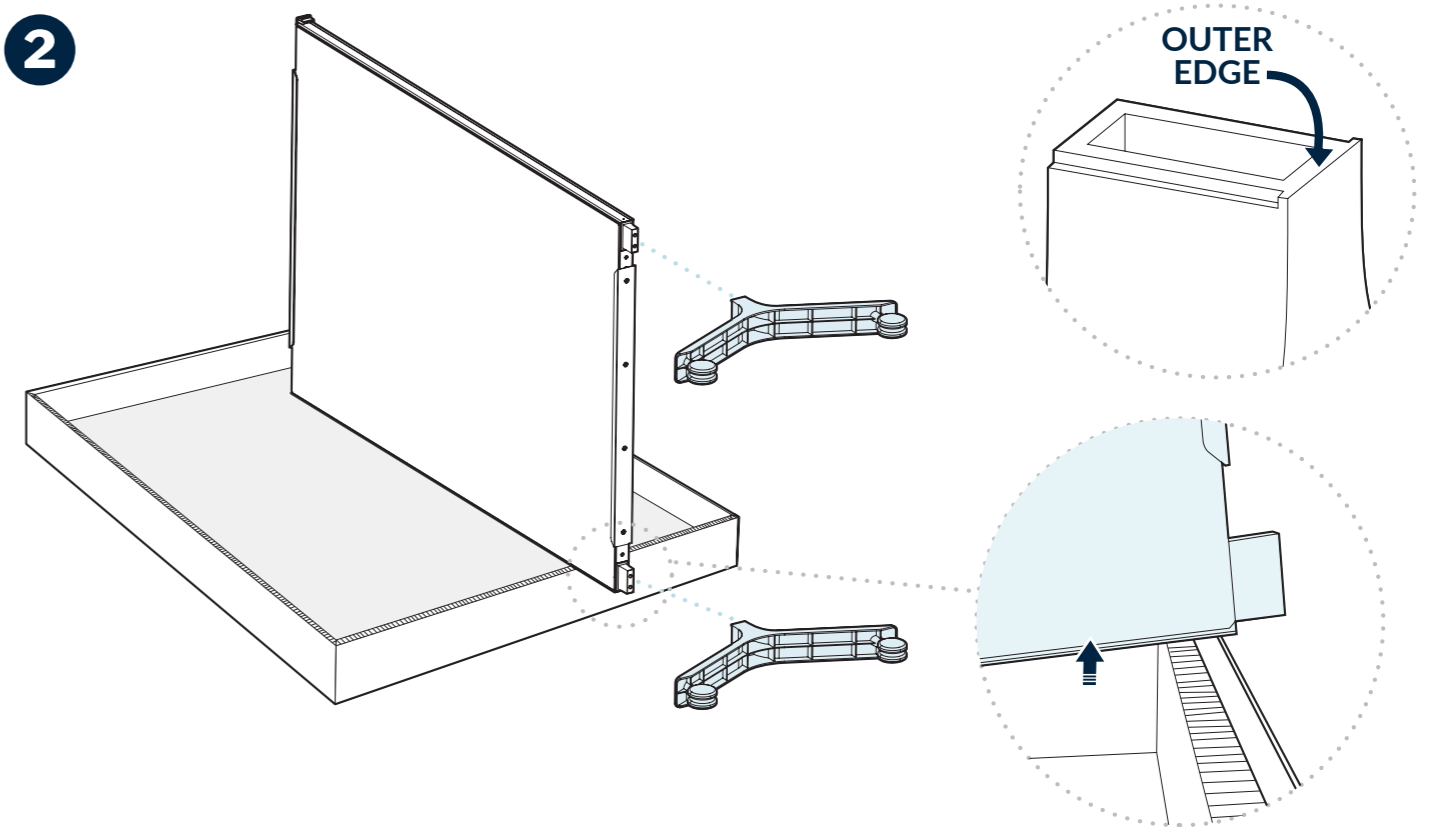
Put the notches on each end of the cable tray over the brackets and slide the tray until they click into place to complete assembly.

1



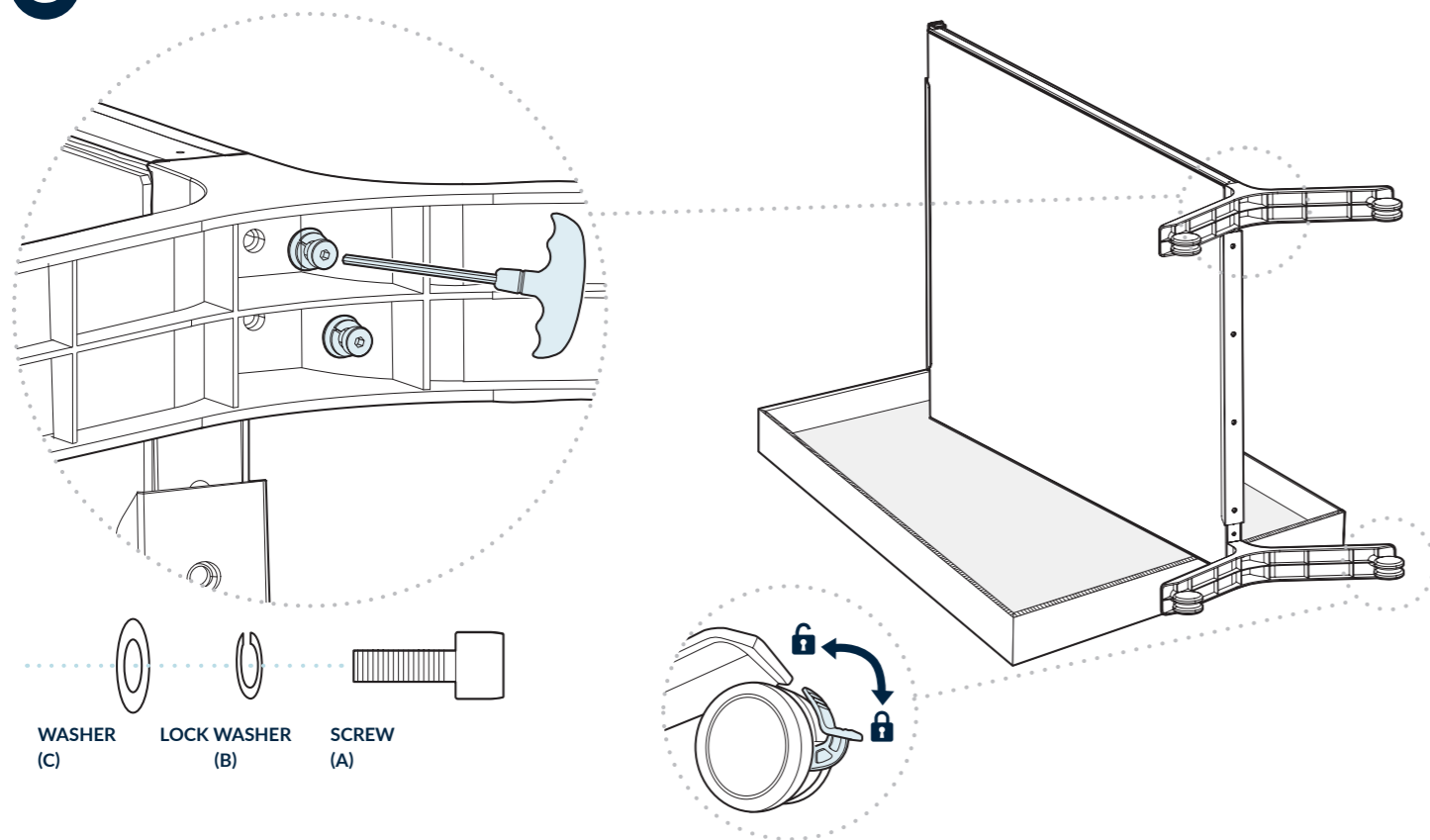
After unboxing, with one person on each side of the board, lift it to rest on its side.

2



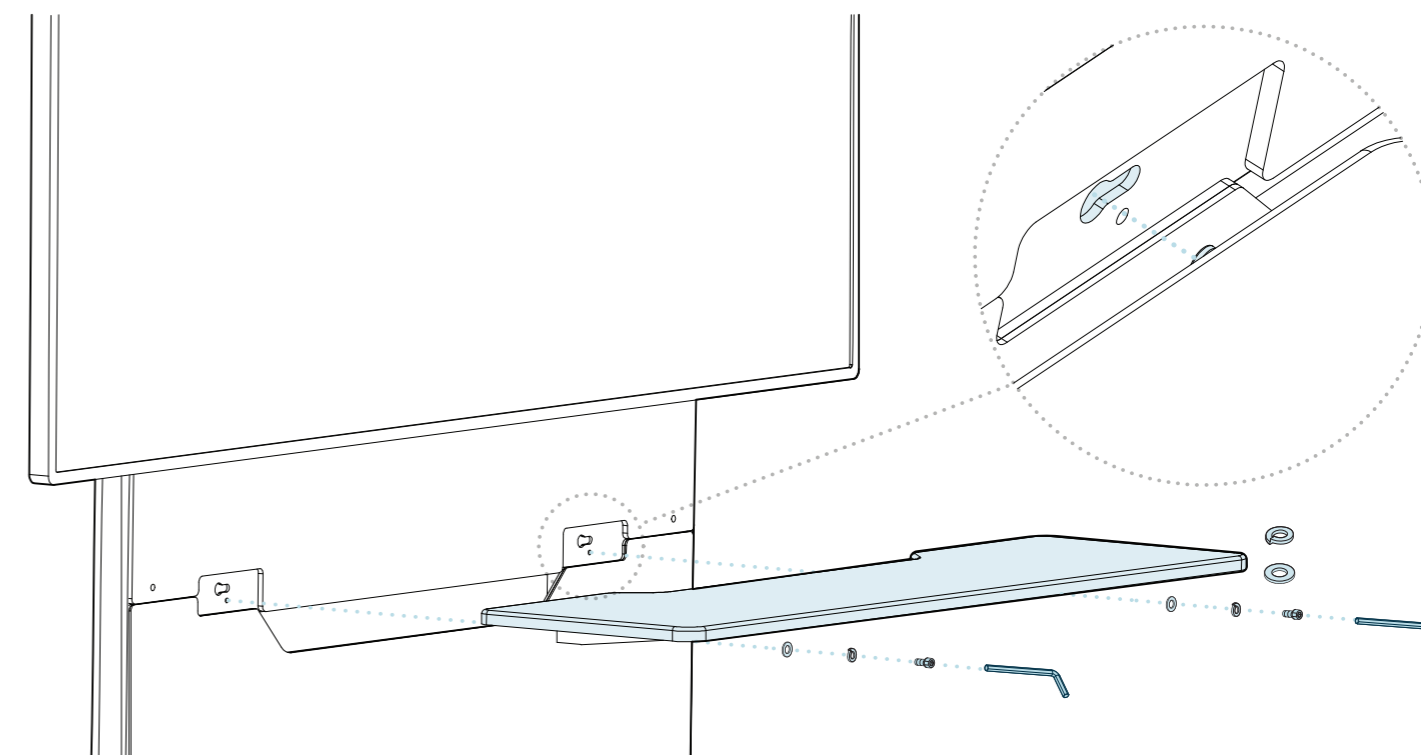
Raise the bottom end of the board to rest on the edge of the box. In the horizontal position, slide the feet into the receiving pegs on the bottom of the board.

3



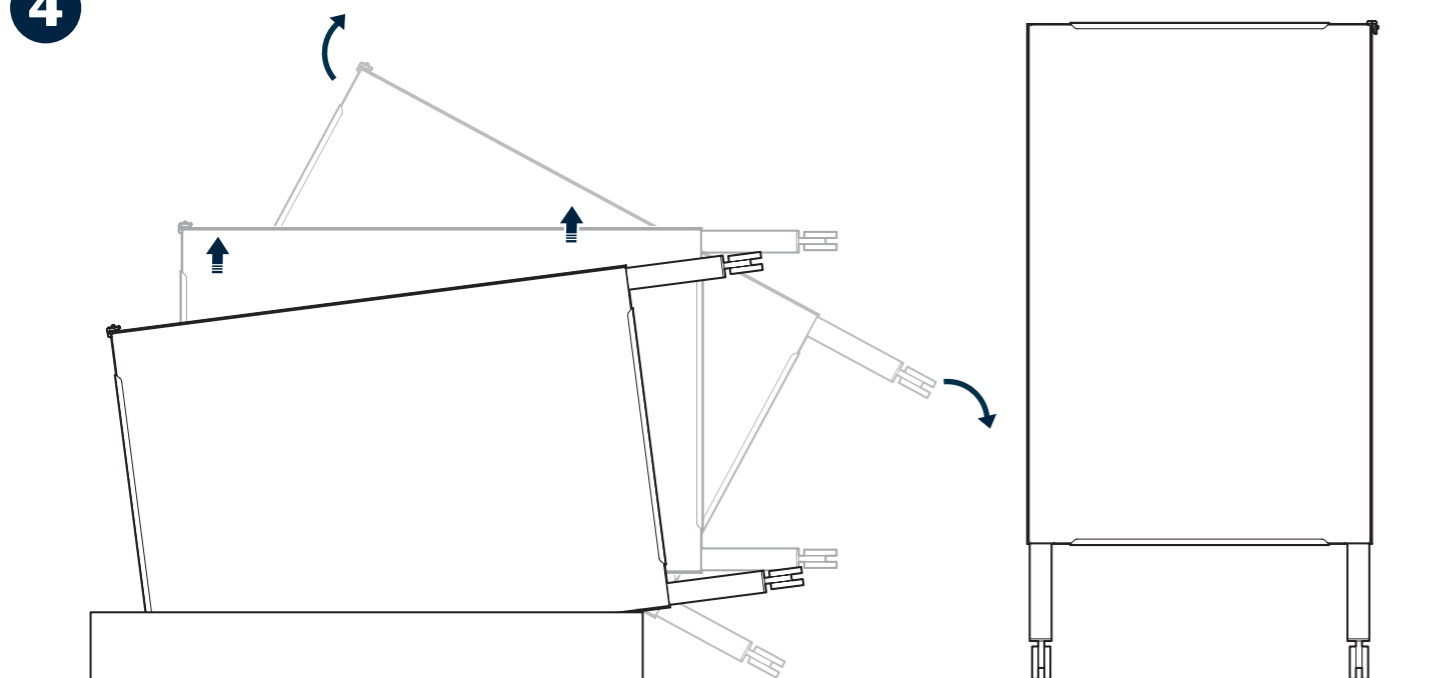
Next, use the provided T-handle and hardware to attach the feet to the receiving pegs. Place one lock washer (B) on the screw (A) followed by one washer (C), then screw into the bottom of the feet. Repeat until all four screws are in place. Lock the casters to keep the wheels from rotating.

5

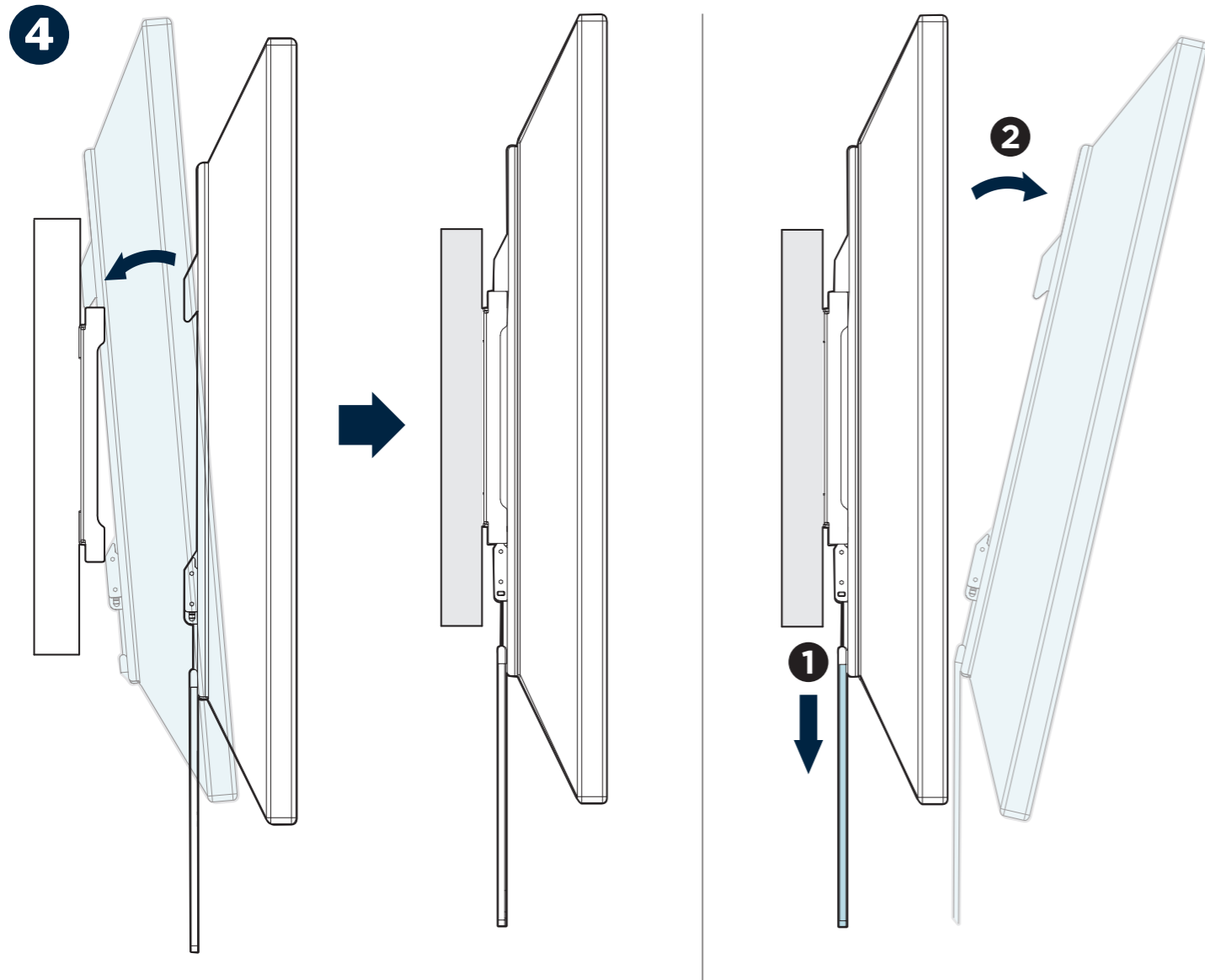


Align the notches on the back of the shelf with the corresponding holes and insert them. Then, slide the shelf sideways to the right to lock it into the frame. Use 2 screws (E), 2 Lock washers (G), 2 washers (F), and the 5mm Allen key to secure the shelf into place.

4



After locking the casters, with one person on each side of the board, lift it into the vertical position and gently place the feet on the ground.

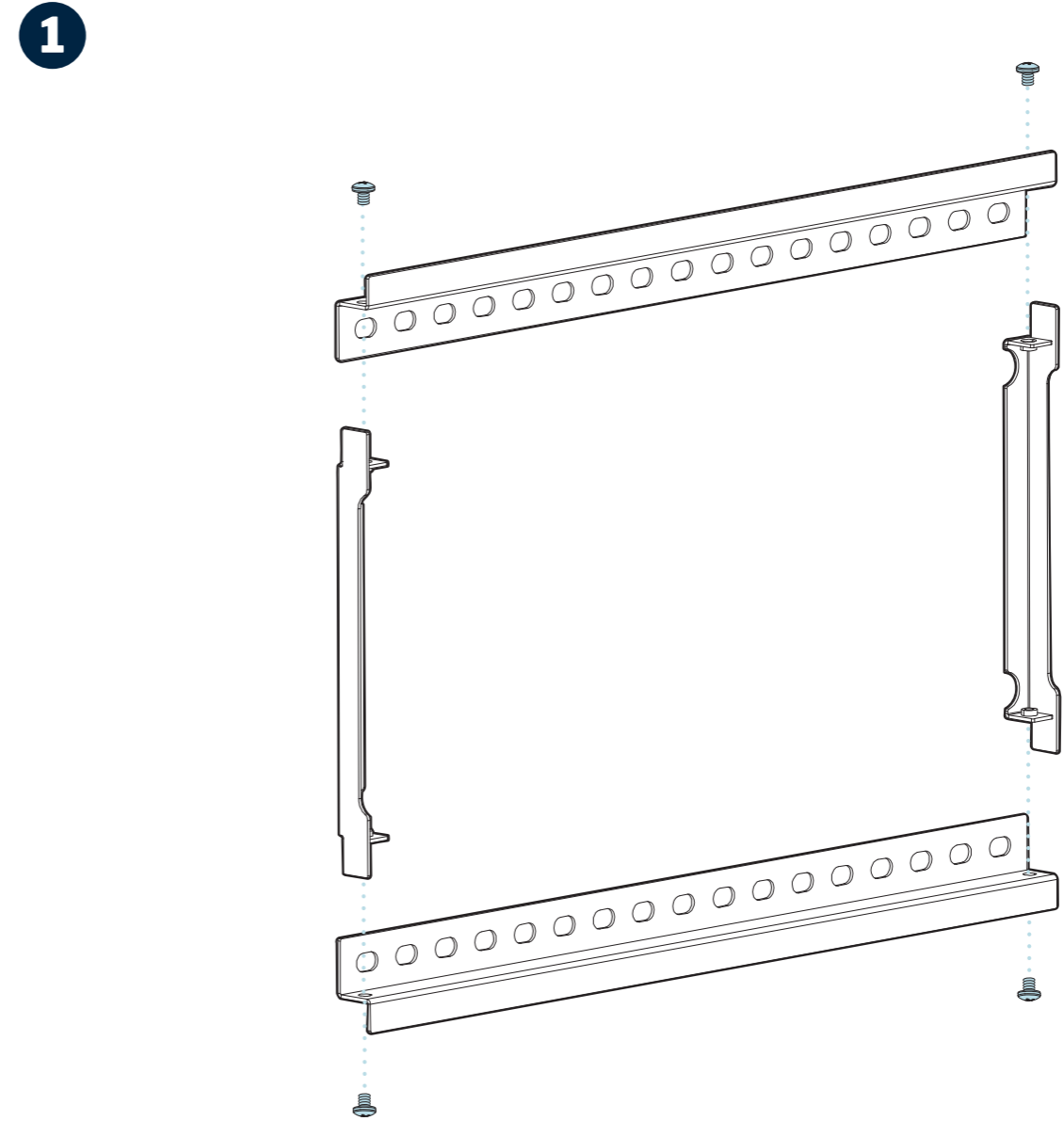


With two people standing on the left and right side of the TV, lift the TV and angle it to latch the upper and lower hooks of the TV bracket onto the upper and lower brackets on the mobile media stand.

To unhook the TV, with two people on each side, pull the straps and lift up and out to fully disconnect the TV bracket from the mount.

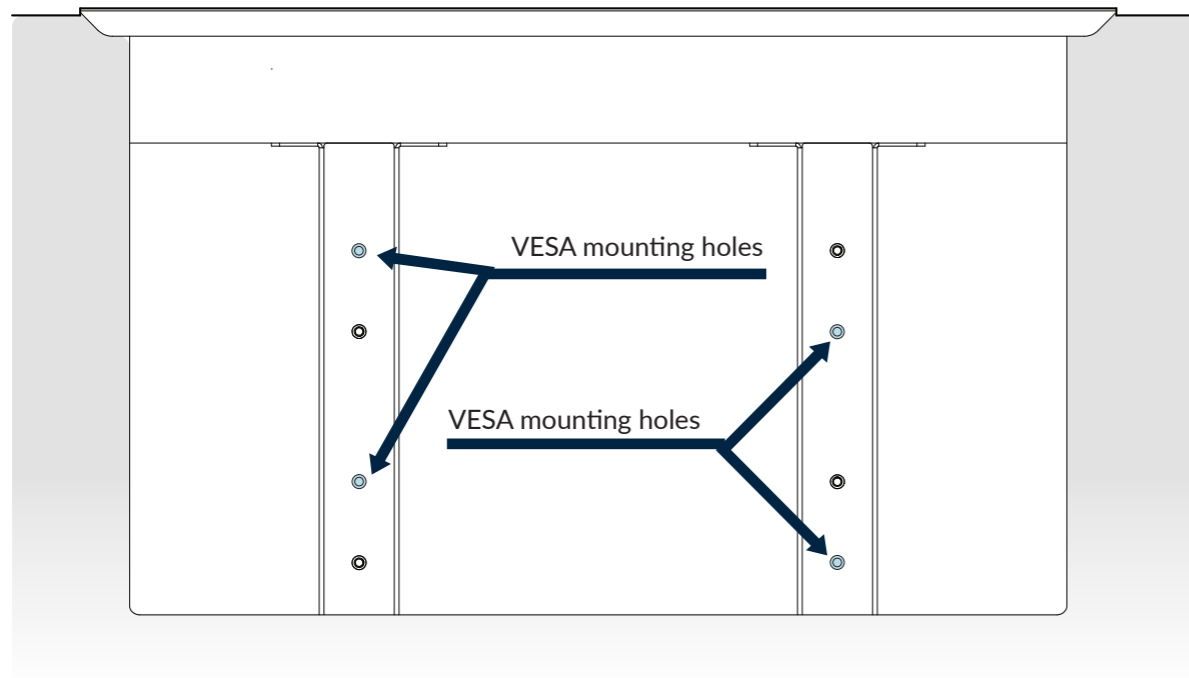
Note: There will be an audible “click” sound when the brackets are properly locked into place.

TV MOUNT INSTRUCTIONS



Using 4 screws (D) and the Philips screwdriver (not included) secure the TV wall bracket 1 & 2 into place.

2

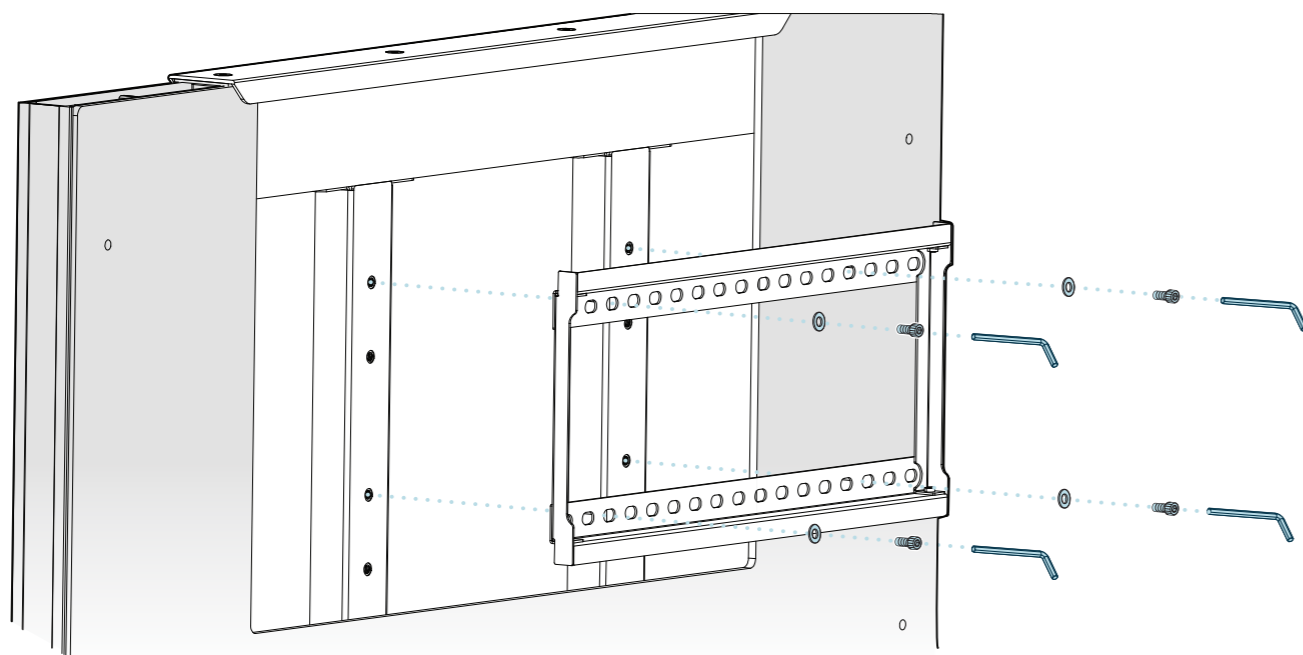


Choose the correct placement on the bracket according to the positioning of your TV VESA holes.

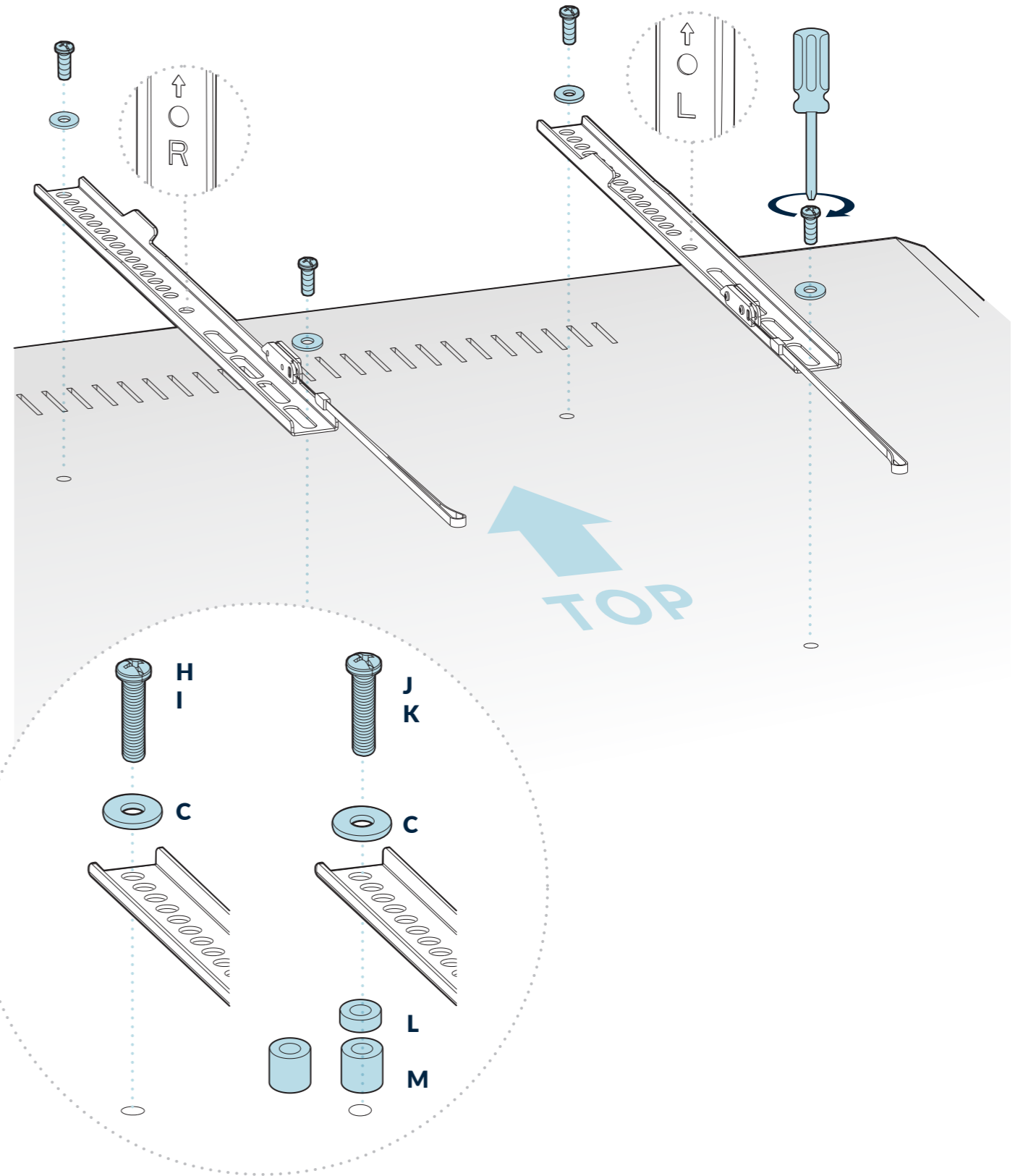
Note: If the VESA mounting holes are on the center of the TV, you will use the 1st and 3rd holes from the top. If the mounting holes are in the bottom of the TV, then you will use the 2nd and 4th holes from the top.

The TV mount can accommodate screen sizes from 32" - 65".

3



Use 4 M6 screws (E), 4 washers (F), and the 5mm Allen key to secure the TV Wall Bracket into place.



Note: Reference the hardware labeled above when attaching the TV brackets. Use the M6 screws for smaller TVs, or the M8 screws, for larger TVs. Ensure that you test both screws on the back of the TV before adding the mounting rails. If your TV has a slight curve on the back, lay the rail on the back to see if it will lay flat on the holes. If not, add spacers between the TV and the rail. Spacers are dependent on the curve of the TV.