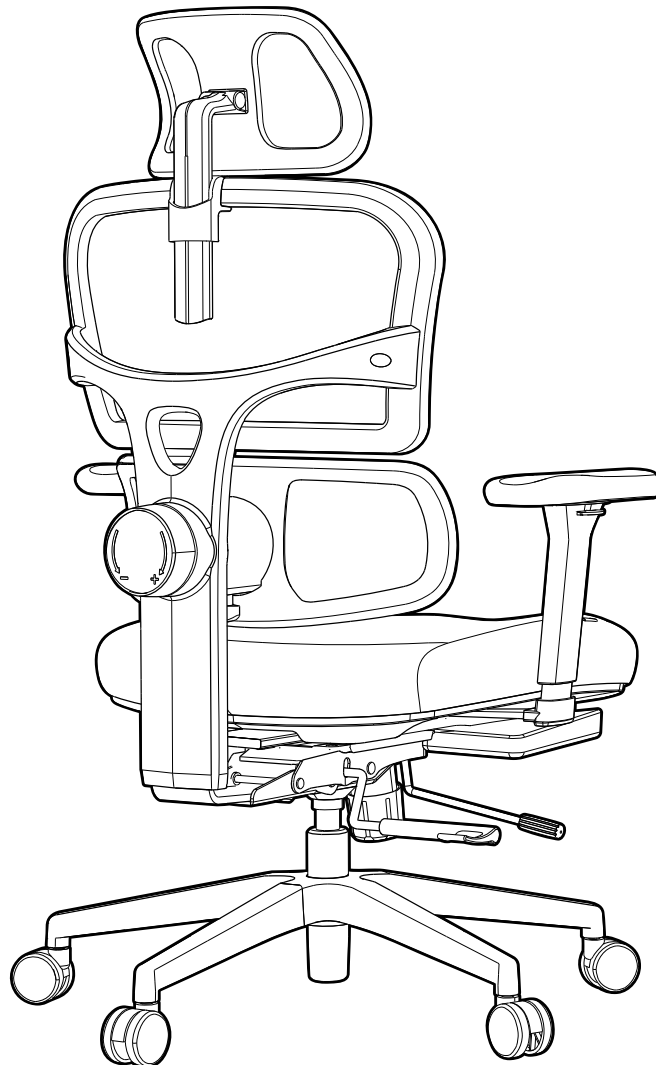




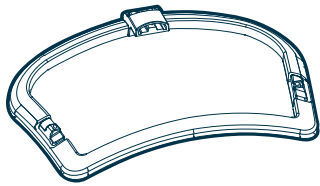
2 People
Recommended



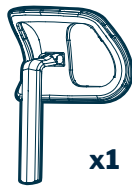
Holds up to
300 lb (136.08 kg)



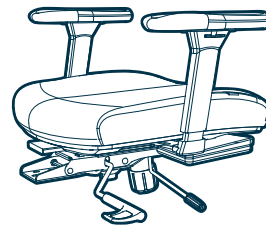
Components



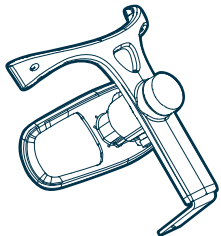
x1
UPPER BACKREST



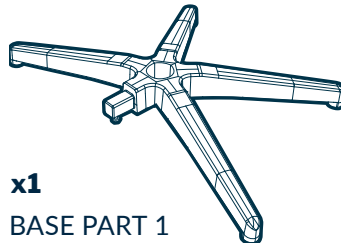
x1
HEADREST



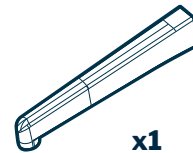
x1
CHAIR SEAT



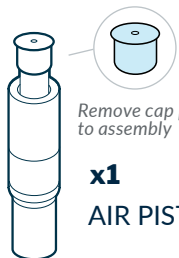
x1
LOWER BACKREST



x1
BASE PART 1



x1
BASE PART 2



x1
AIR PISTON



x5
CASTERS



x2
BACKREST SCREW
COVER



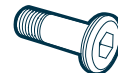
x1
ALLEN KEY



x2
BACKREST SCREW
M6 X 16MM

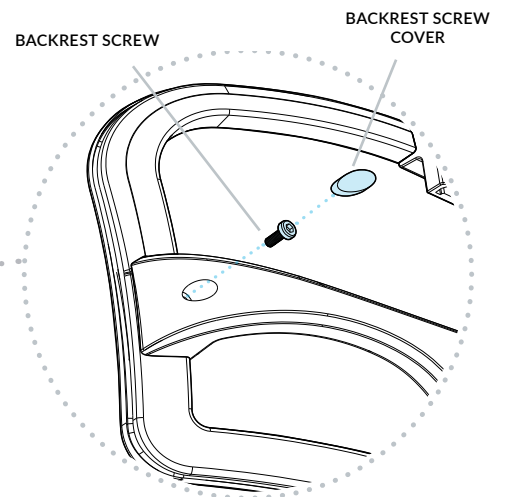
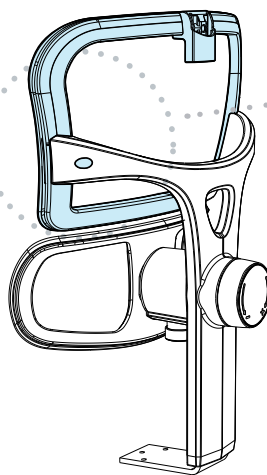
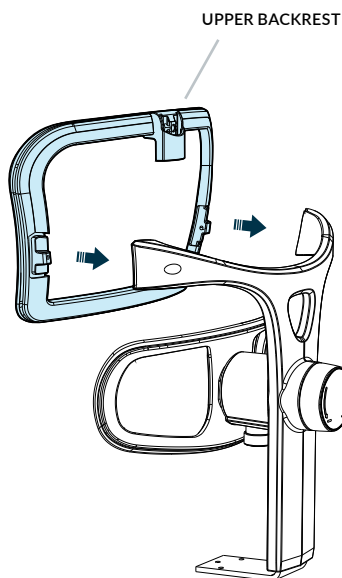


x3
CHAIR REST SCREW
M8 X 16MM



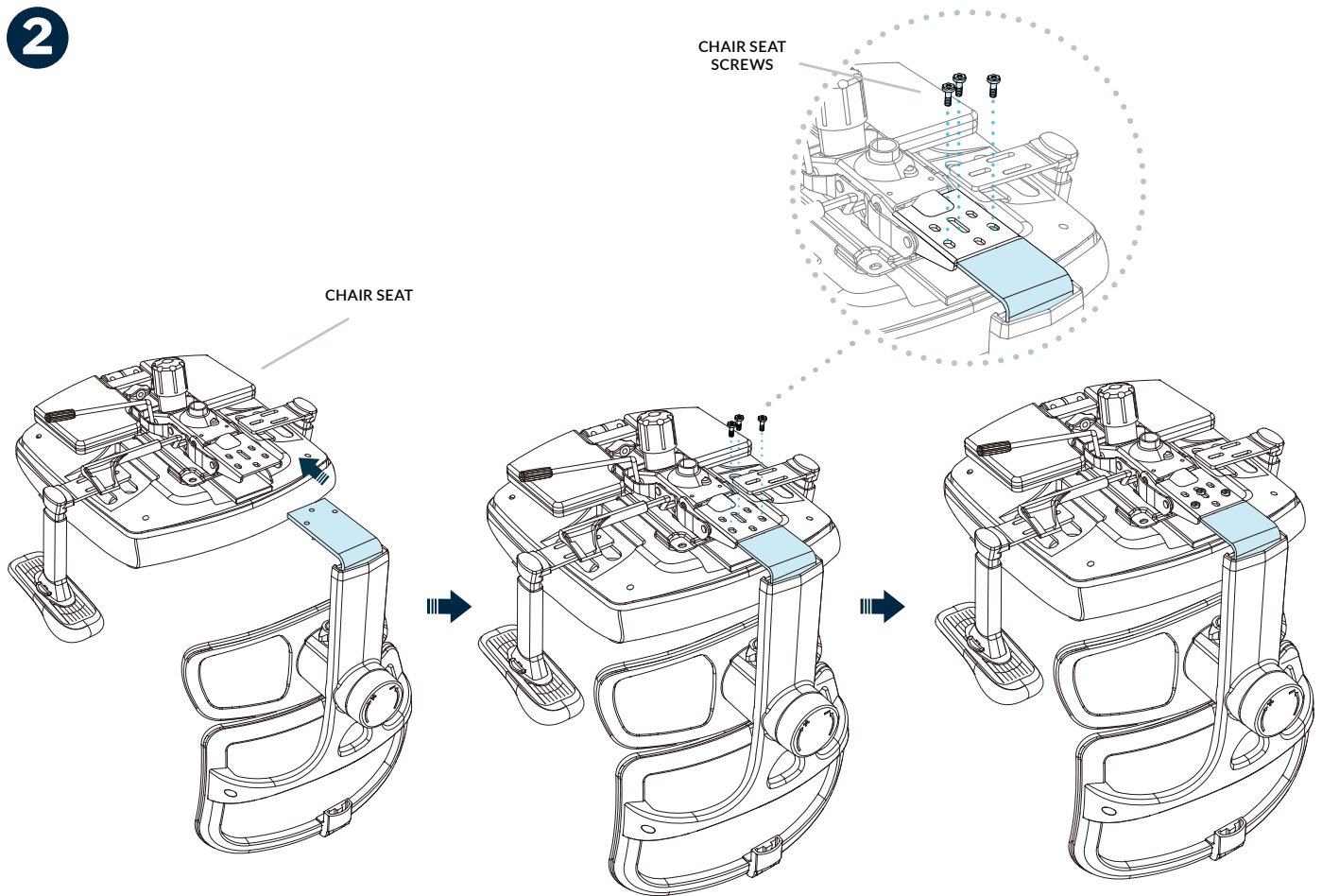
x1
BASE SCREW
M6 X 20MM

1



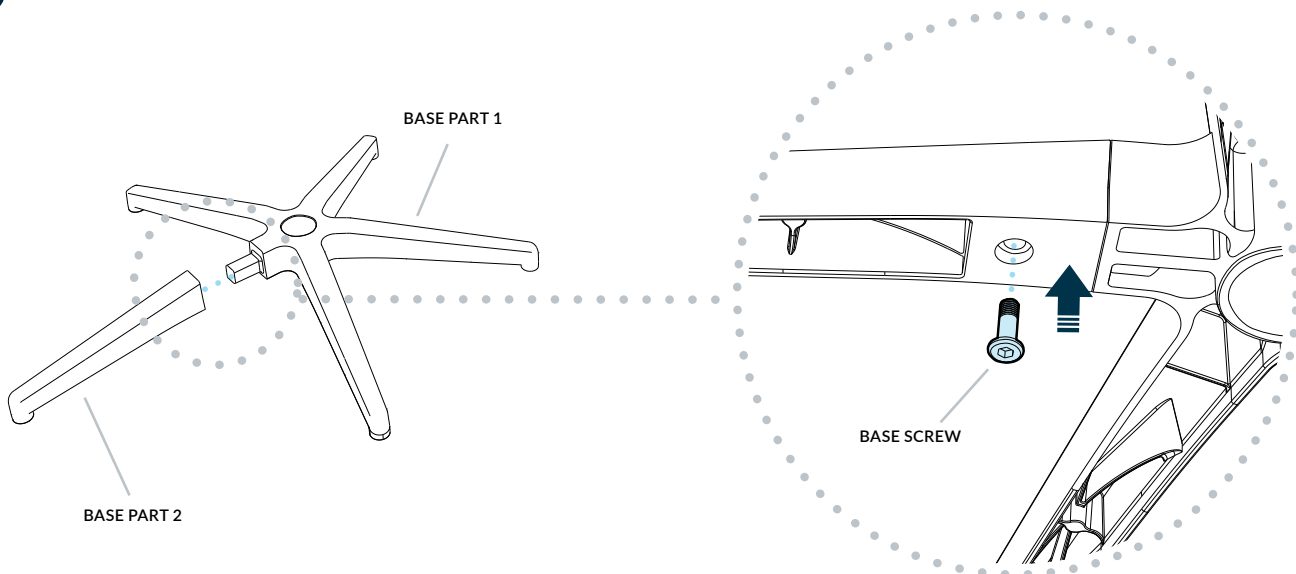
Set the **LOWER BACKREST** upright and insert the **UPPER BACKREST** into the two connection points on the **LOWER BACKREST**. Insert **(1) BACKREST SCREW** into each connection point and tighten them with the included **ALLEN KEY**. Cover each screw hole with a **BACKREST SCREW COVER**.

2



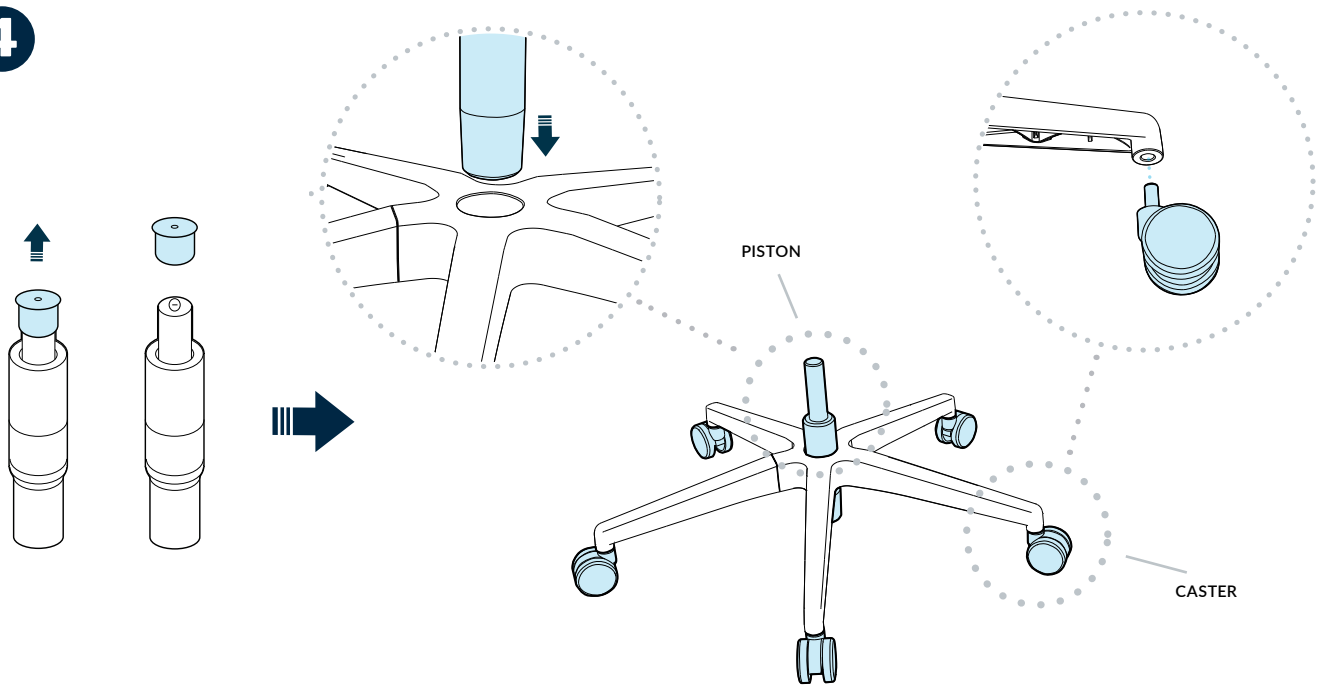
Set the **CHAIR SEAT** upside down and line up the mounting holes to connect the assembled **BACKREST**. Insert the **(3) M8 X 16MM CHAIR SEAT SCREWS** into the mounting holes shown above, and use the included **ALLEN KEY** to secure the bracket.

3



Insert **BASE PART 2** into the connection point for **BASE PART 1**. Then insert the **M6 X 20MM BASE SCREW** and tighten using the included **ALLEN KEY**.

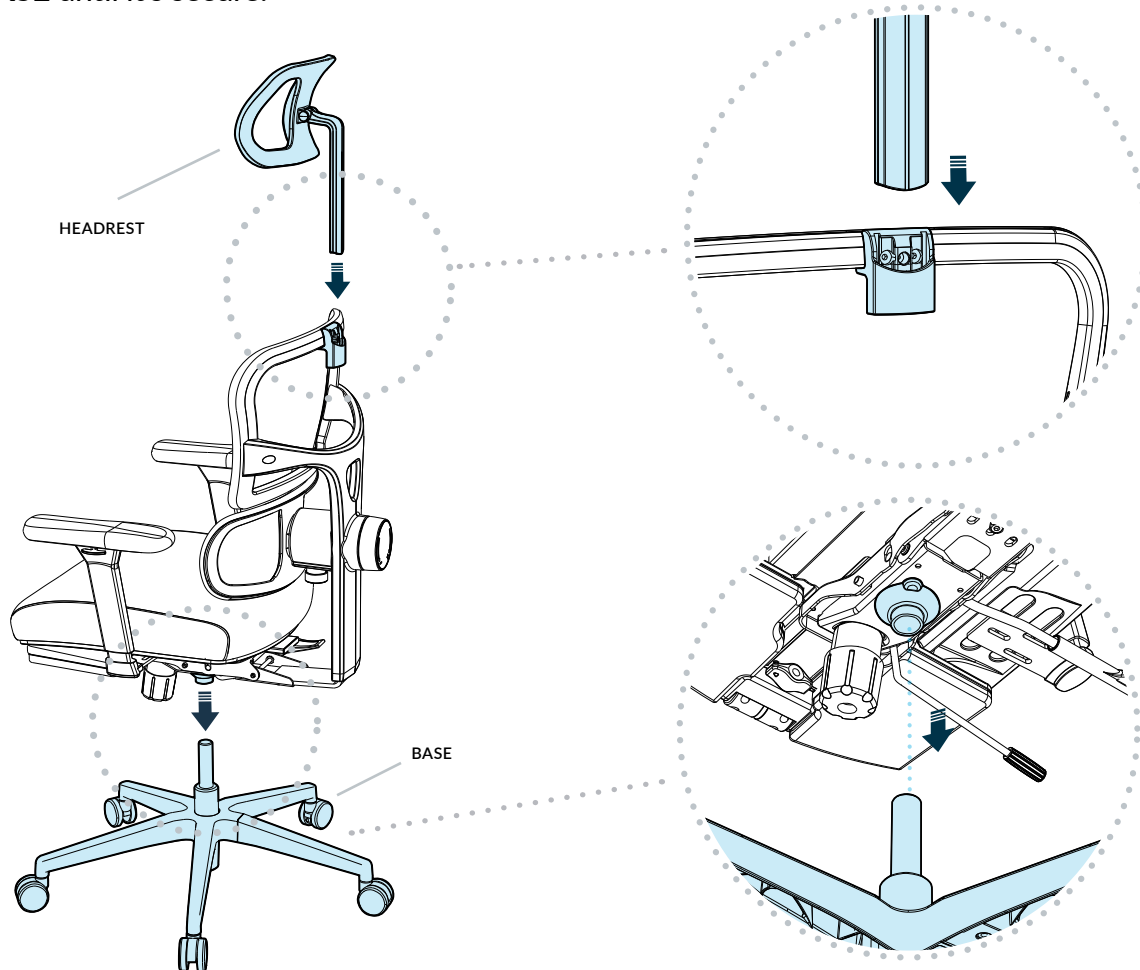
4



NOTE: Remove the protective cap from the smaller end of the piston. Once the chair is assembled, the cap is no longer needed and can be discarded.

Insert the **(5) CASTERS** into the **BASE** until they snap into place. Once attached, flip the **BASE** over. After removing the cap, lower the larger end of the **PISTON** into the center of the **BASE** until it's secure.

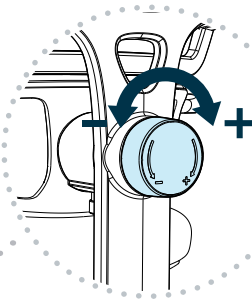
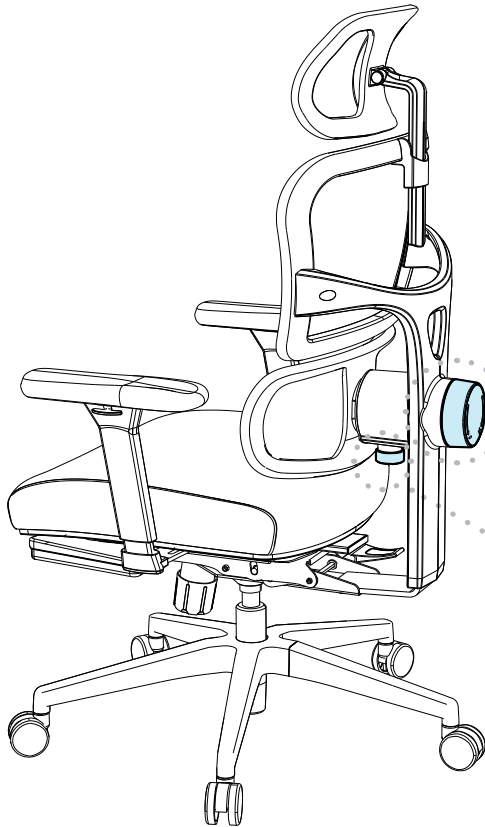
5



Take the assembled chair and place it on the **PISTON** that is attached to the **BASE**. Lastly, attach the **HEADREST** by inserting it into the top of the **CHAIR SEAT** and pressing firmly to secure it.

CAUTION: Once assembled, do not attempt to disassemble the chair, as doing so could damage the product.

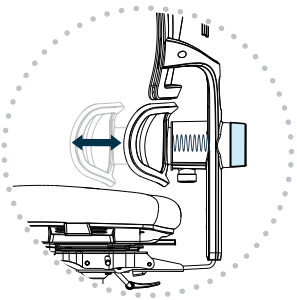
Adjustment Options



LUMBAR SUPPORT STRENGTH ADJUSTMENT

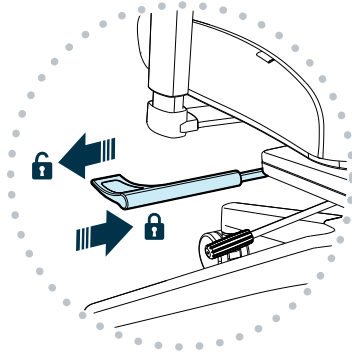
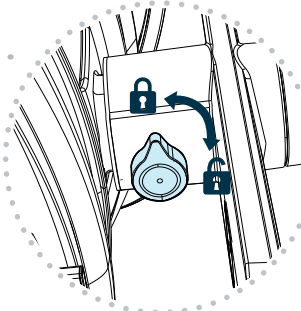
To adjust the Lower Backrest and increase the amount of support, turn the knob right towards the "+" sign.

To adjust the Lower Backrest and decrease the amount of support, turn the knob left toward the "-" sign.



LUMBAR SUPPORT LOCK/UNLOCK

Turn the knob to lock the desired lumbar support strength in place, or unlock and adjust as desired.



CHAIR BACK TILT ADJUSTMENT

To adjust the angle of the Chair Back, pull the lever on the right side outward. Lean on the backrest to set the desired angle. Push the lever inward to lock the angle in place.

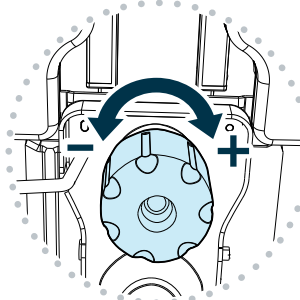
To reset the Chair Back to its original position, lean on the chair back and pull the lever outward to unlock it.

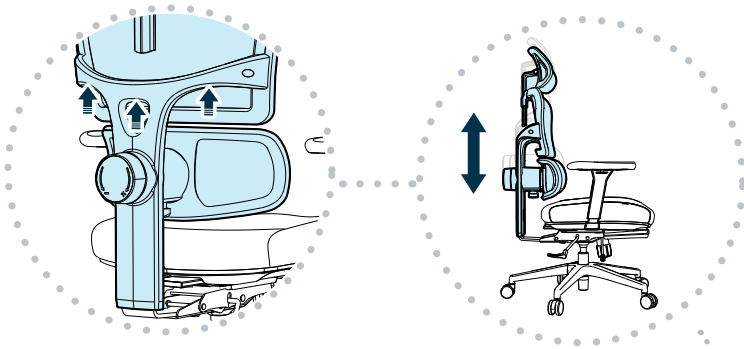
NOTE: When resetting the Chair Back angle to its original position, you must lean on the Chair Back prior to pulling the lever outward.



BACKREST RECLINE TENSION ADJUSTMENT

To adjust the reclining tension of the backrest, turn the knob to the right towards the "+" sign to increase tension, or to the left towards the "-" sign to decrease tension.

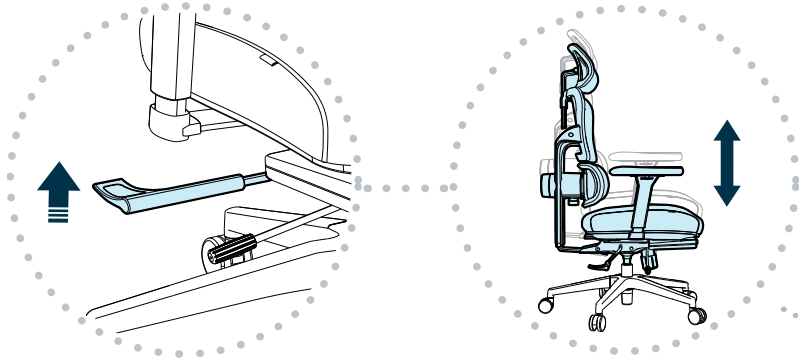




UPPER BACKREST HEIGHT ADJUSTMENT

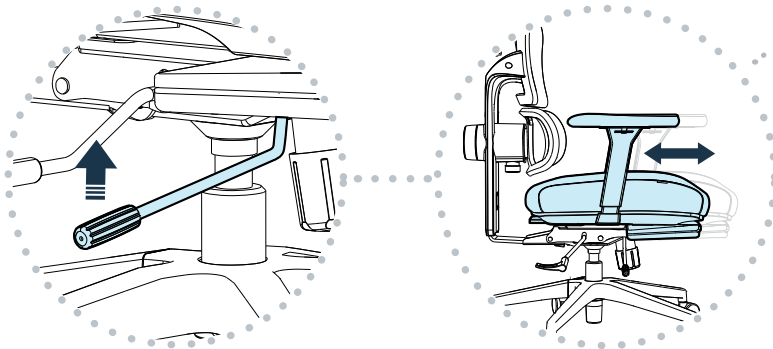
To adjust the Upper Backrest height, slowly lift or lower the backrest until the desired height is reached.

NOTE: If the Backrest is lifted to the highest setting, it cannot be locked and will reset to the lowest height setting.



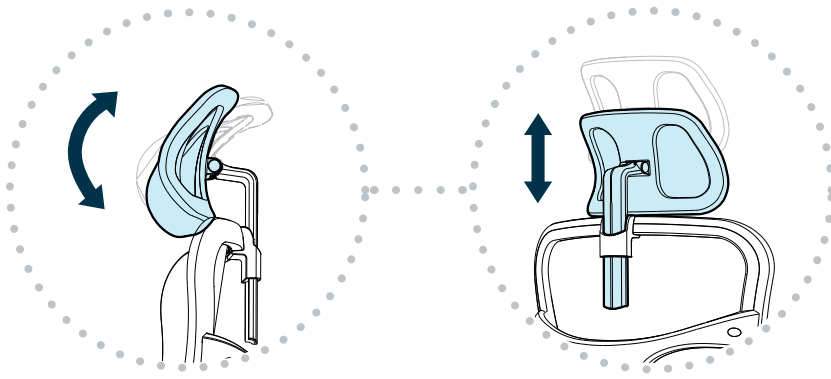
SEAT HEIGHT ADJUSTMENT

To adjust the Seat Height, lift the back lever under the right side of the Chair Seat.



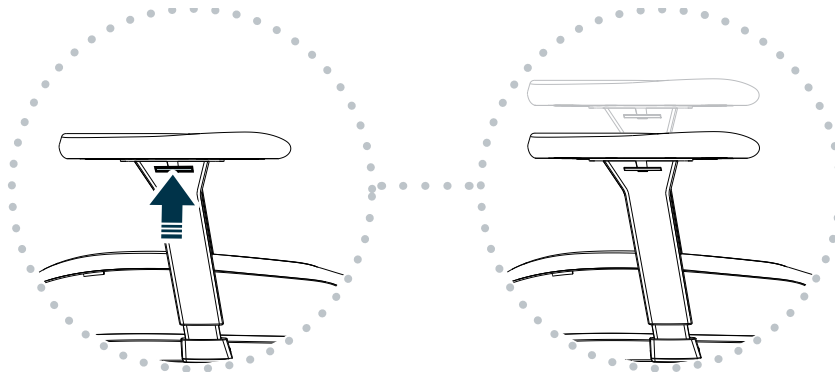
SEAT DEPTH ADJUSTMENT

To adjust the position of the Chair Seat, use the front lever under the right side of the Chair Seat and pull the seat forward or push it back.



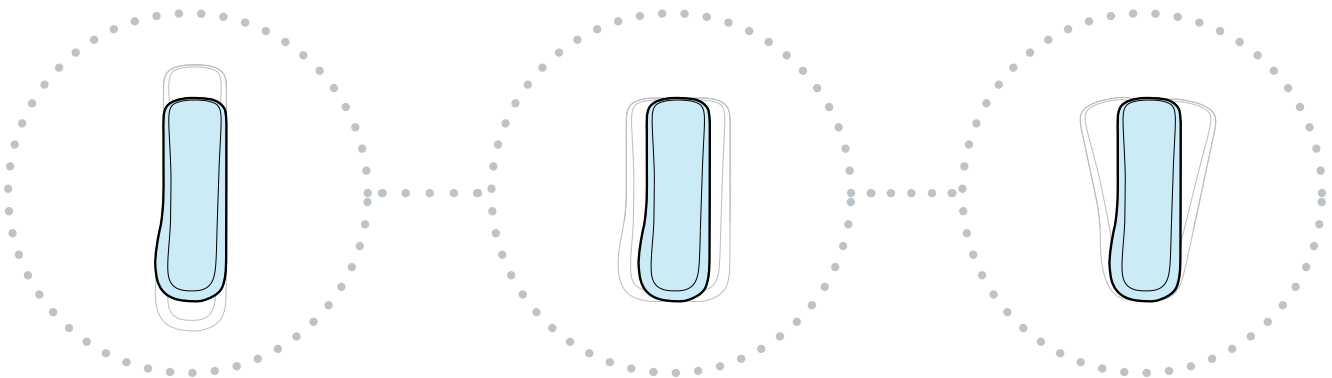
HEADREST ADJUSTMENT

To adjust the headrest's angle, tilt it back or forward.
To adjust the headrest's height, gently pull up to raise and push down to lower.



ARM ADJUSTMENTS

To adjust the arm height, press and hold the button on the outside of the arms.
Lift or lower the arms and release the button once at the desired height.



FRONT-TO-BACK

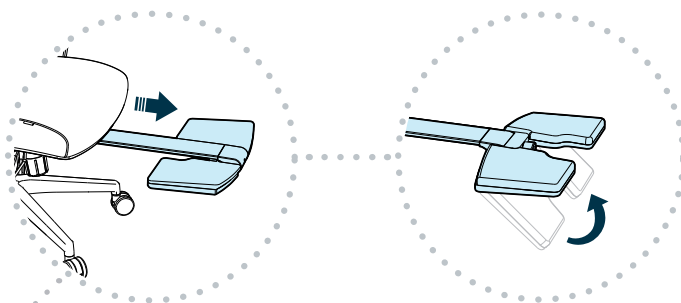
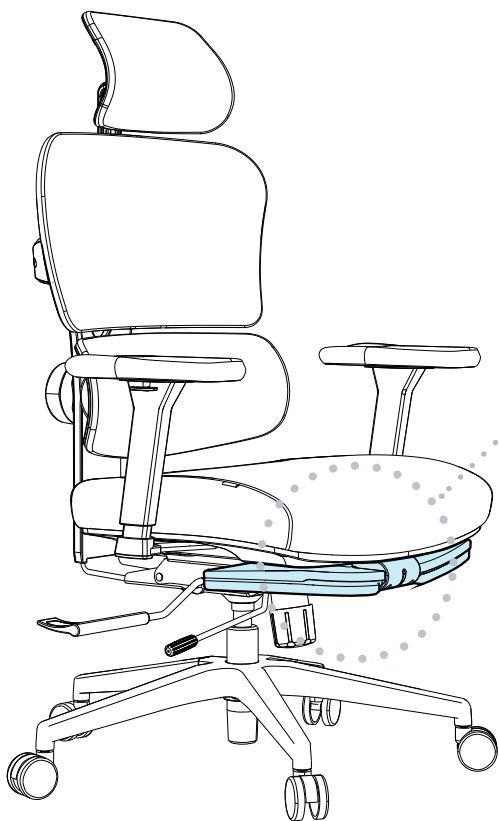
To adjust the front-to-back position of the armrest, gently grab the center of the armrest, and slide forward or backward into the desired position.

SIDE-TO-SIDE

To adjust the side-to-side position of the armrest, gently grab the center of the armrest, and slide inward or outward into the desired position.

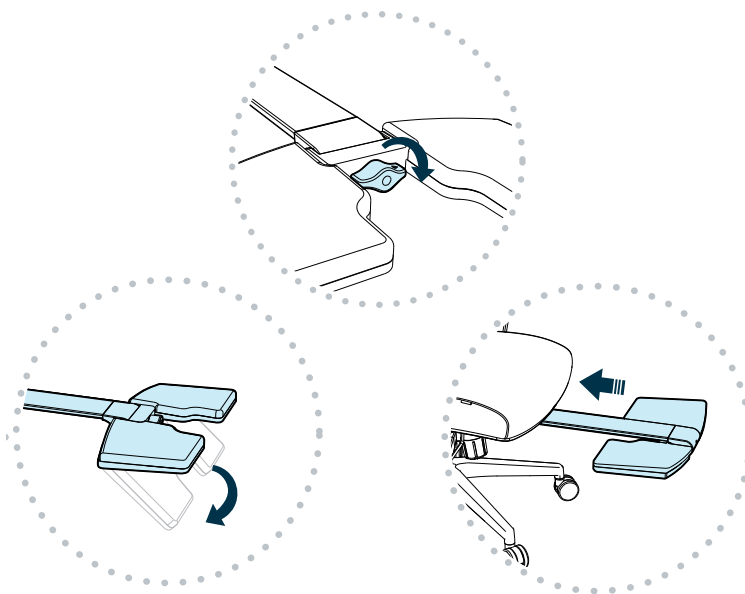
ANGLED

To adjust the angle of the armrest, gently grab the front or back of the armrest, and twist laterally into the desired position.



FOOTREST ADJUSTMENT

Locate the Footrest underneath the Chair Seat and pull it forward, then flip it up.



To retract the Footrest, turn the knob to loosen it, then flip the Footrest back and tuck it underneath the Chair Seat.



WARNING: To prevent injuries and product failure, do not use this chair for standing, climbing, or leaning. Do not use if the chair is damaged or incorrectly assembled.



(800) 207-2587

vari[®]