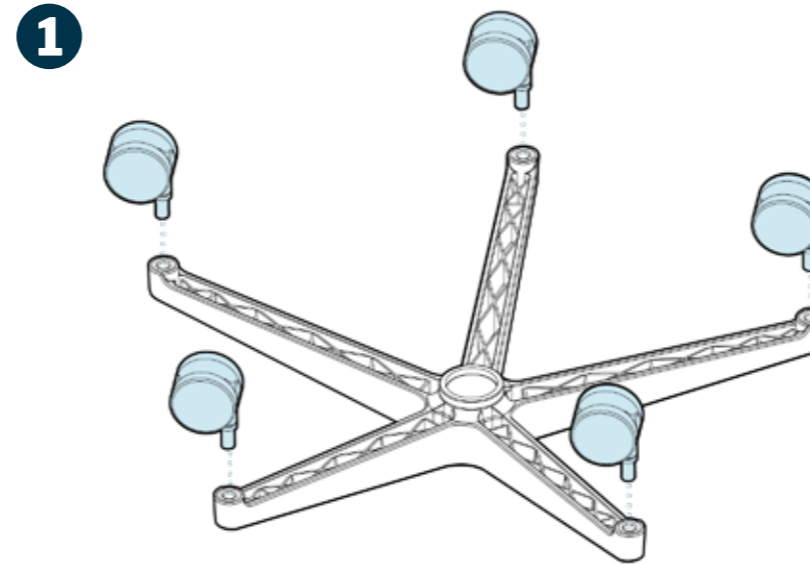
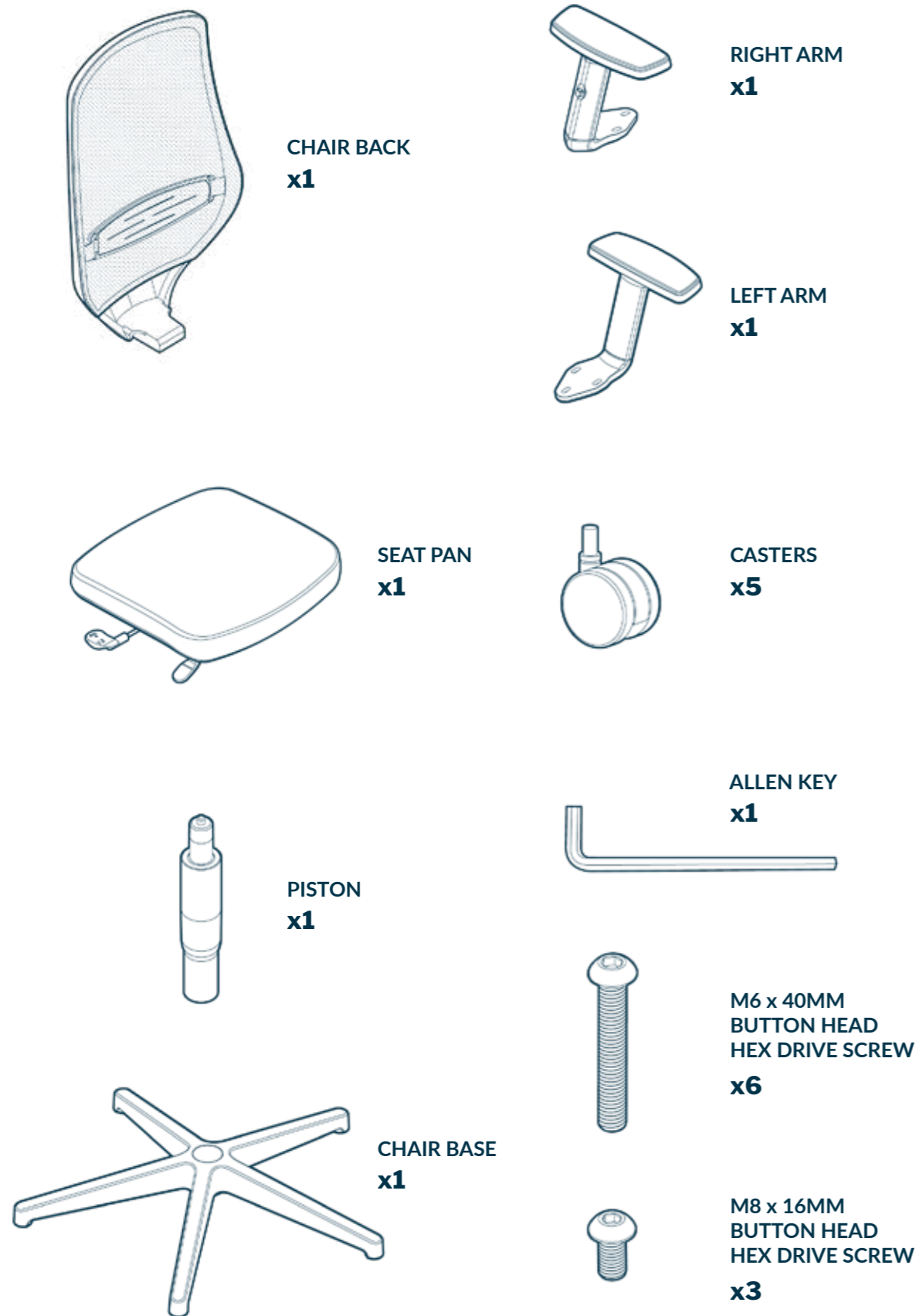


Essential Task Chair

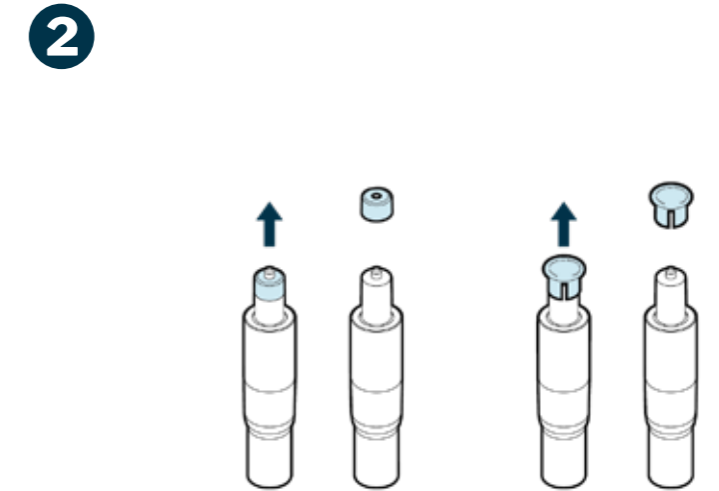
2 People
Recommended

Holds up to
275 lb (125 kg)

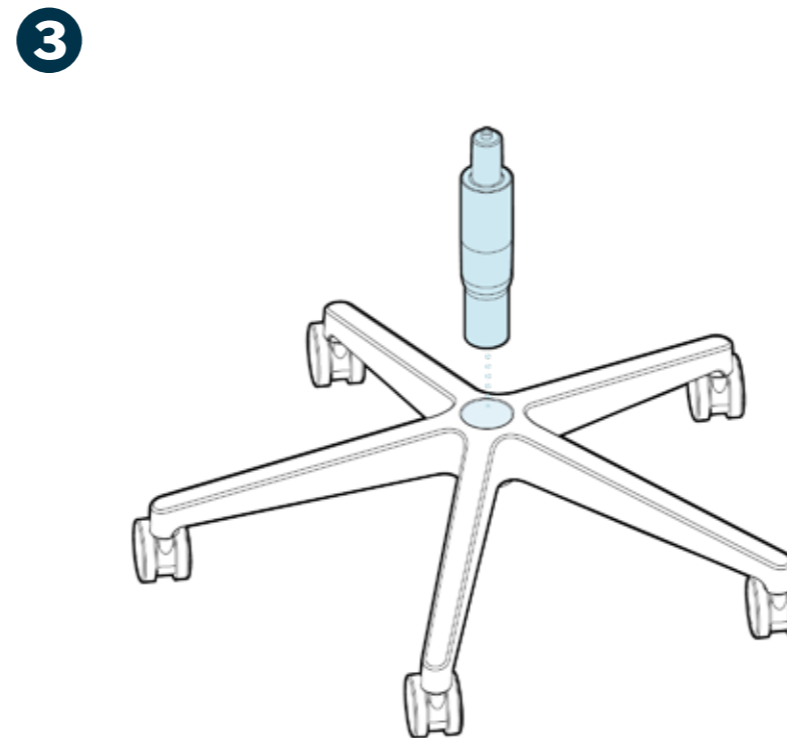
vari®



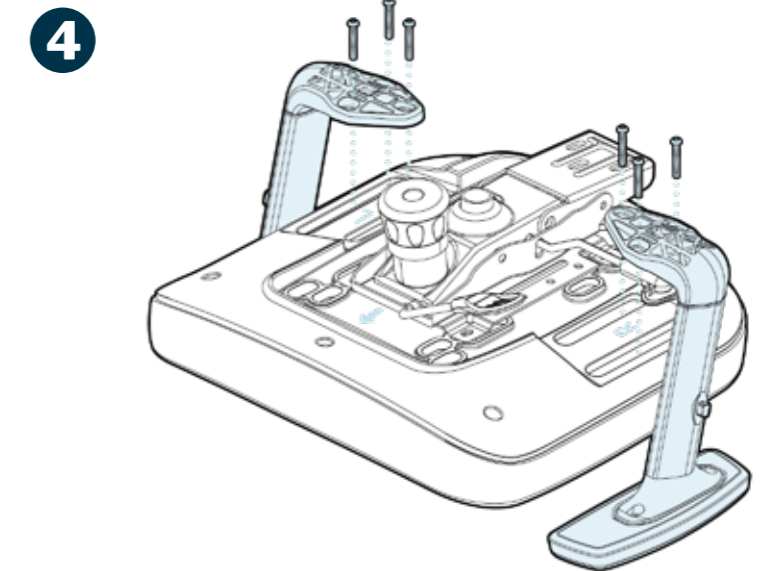
Insert the five casters into the chair base until they snap into place. Once attached, flip the base over.



Remove the protective cap (could be orange or black) from the smaller end of the piston. Once the chair is assembled, the cap is no longer needed and can be discarded.

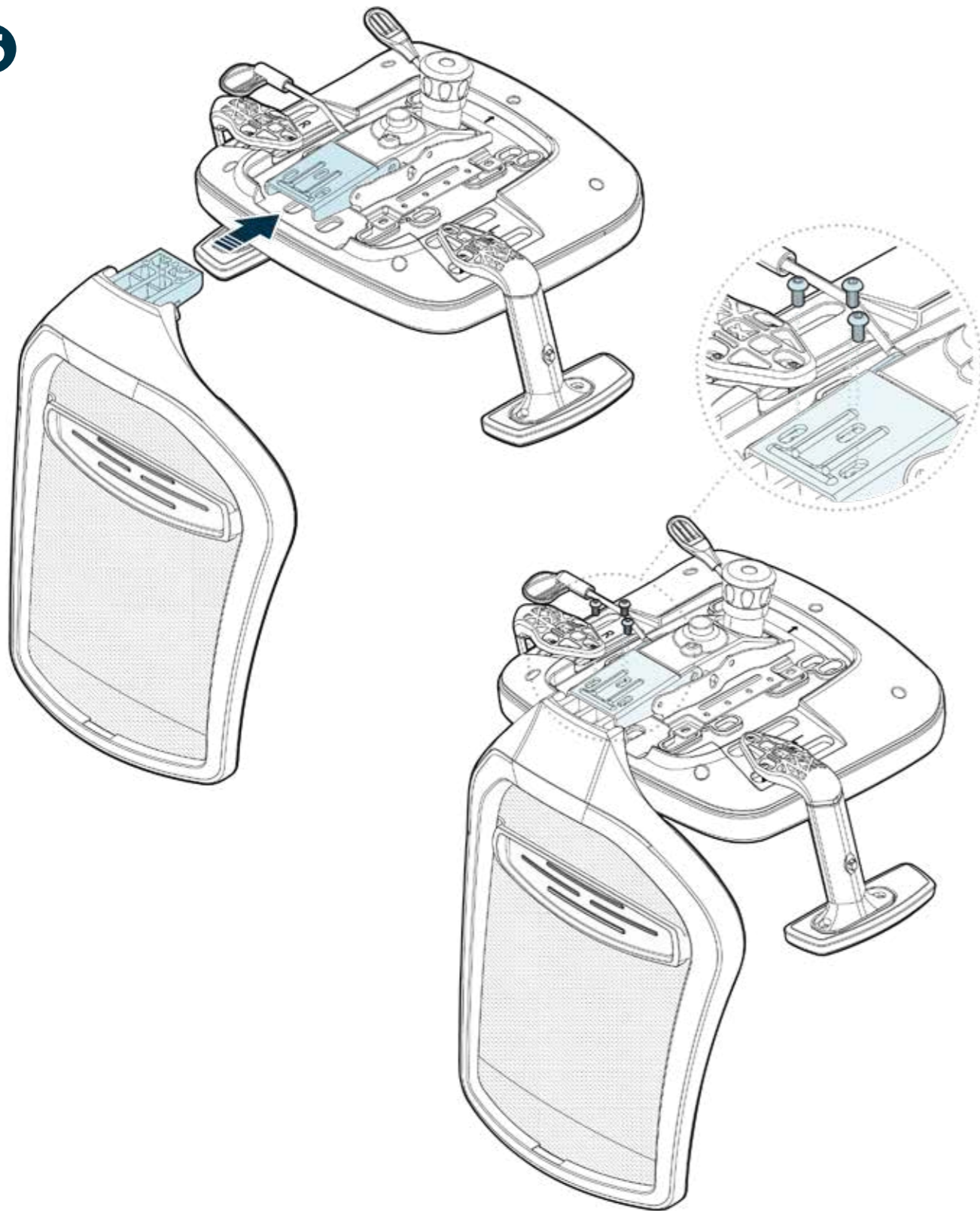


After removing the cap, lower the larger end of the piston into the center of the base until it is secure.



With the seat pan upside down, align the arm mounting holes with the holes on the seat pan. Noting the L and R marks on the seat pan and arms, ensure the chair arms are on the correct sides; the longer underside of the chair arm should be pointing toward the front of the seat pan (marked with an arrow). Bolting the arms on, using the six (6) M6 x 40mm screws and Allen key to secure them.

5



Slide the chair back onto the seat pan and align mounting holes. Use the three (3) M8 x 16mm screws and Allen key to secure the chair back.

6



Lastly, take the assembled chair seat and place it on the piston that is attached to the base.

CAUTION: Once assembled, do not attempt to disassemble the chair, as doing so could damage the product.



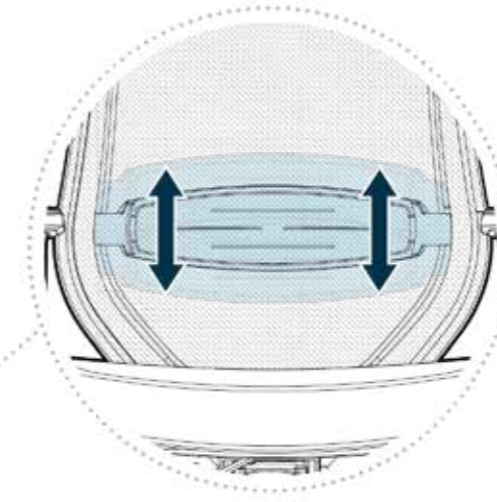
(800) 207-2587

Patent and trademark information: vari.com/patents |
©2021, 2023 Varidesk, LLC All rights reserved.



WARNING: To prevent injuries and product failure, do not use this chair for standing, climbing, or leaning. Do not use if the chair is damaged or incorrectly assembled.

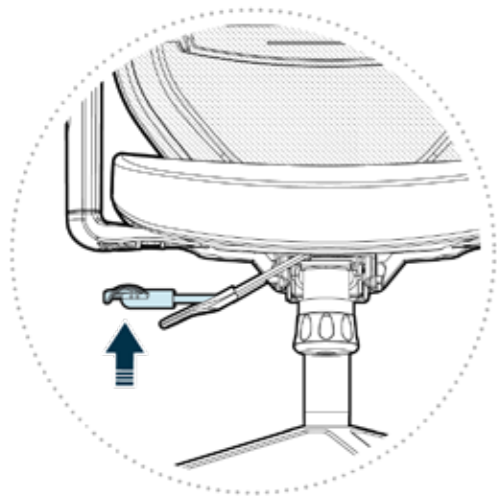
Essential Task Chair Adjustments



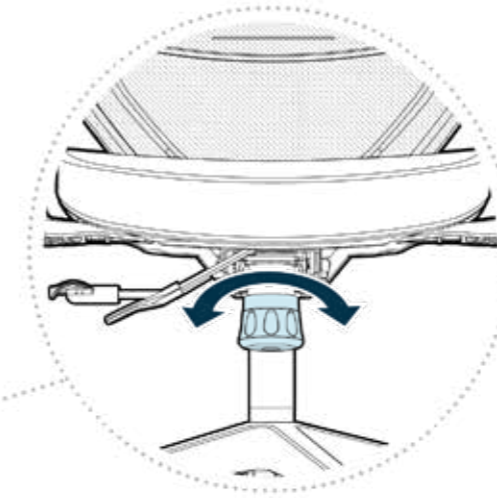
To adjust lumbar support, push the support up or down accordingly.



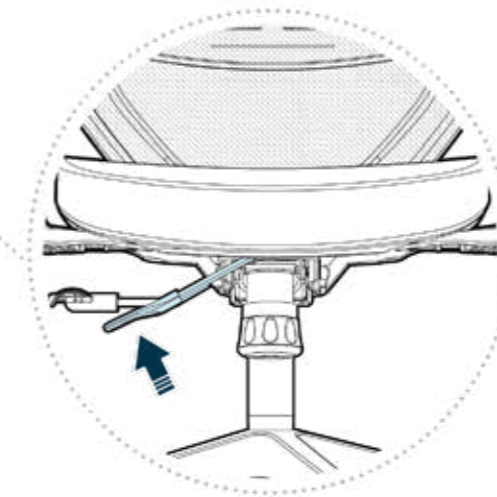
To adjust arm height, press and hold button on the outside of the arms. Lift or lower the arms and release the button once at the desired height.



To adjust seat height, use the rear lever under the right side of the chair seat. This lever can also be pushed in to lock the backrest's angle or pulled out to allow the backrest to recline.



To adjust how easily the backrest reclines, turn the knob clockwise to increase tension and counter clockwise to decrease tension.



To move the seat cushion forward or backward, use the front lever on the right side of the chair.

